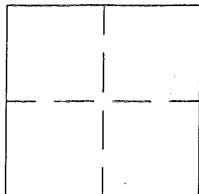


CORNER RECORD

BK 55 PG 59APN No. 903 - 006 - 003 - 04 (Optional)Document Number CR 3731Unincorporated LIVERMORECounty of ALAMEDA, CaliforniaBrief Legal Description FOUND IRON BOLT ON N. LIVERMORE AVE. @ STATION 139+98.87

CORNER TYPE

Government Corner ☐ Control ☐
Meander ☐ Property ☐
Rancho ☐ Other ☒
Date of Survey JUNE 15, 2009

COORDINATES (Optional)

N. 449980
E. 1633036
Zone NAD27 ☐ NAD83 ☐
NAD 83 Epoch
Elev.

Corner - Left as found ☒ Found and tagged ☐ Established ☐ Reestablished ☐ Rebuilt ☐

In compliance with Section 8771 of the Professional Land Surveyors' Act, this corner record is being filed to ESTABLISH X / REESTABLISH the position of an existing monument PRIOR X / SUBSEQUENT to street or highway reconstruction. (Use this portion only when applicable.)

Identification and type of corner found: Evidence used to identify or procedure used to establish or reestablish the corner:

FOUND IRON BOLT W/ "X" & PUNCH ON N. LIVERMORE AVE. @ STA. 139+98.87
ESTABLISHED 4 REF. PTS., SET 1/2" REBAR WITH PLASTIC CAP.
SEE PG. 2. MONUMENT I.D.# EC8464

A description of the physical condition of the monument as found and as set or reset:

FOUND IN GOOD CONDITION

SURVEYOR'S STATEMENT

This Corner Record was prepared by me or under my direction in conformance with the Land Surveyors' Act on AUGUST 20, 20 09.

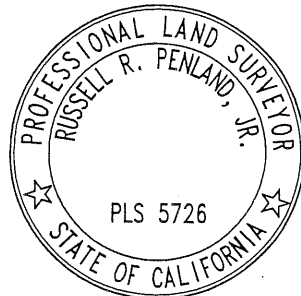
Signed Robert A. Machado (L.S. or R.C.E. Number 7380)



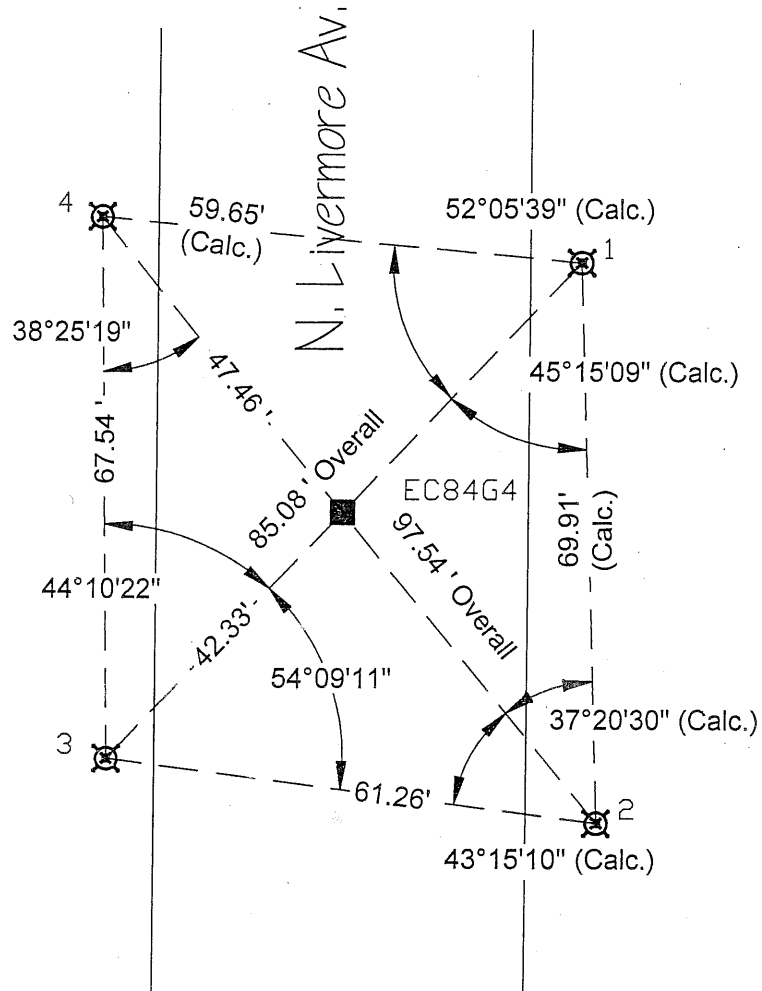
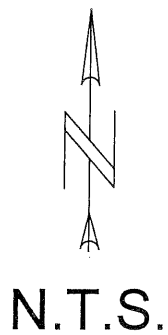
COUNTY SURVEYOR'S STATEMENT

This Corner Record was received AUGUST 20, 20 09 and examined and filed 11-14-20 13.

Signed [Signature] Title County Surveyor



County Surveyor's Comment



Legend

Found: I.B. with "x" on C.L. 

Set: $\frac{1}{2}$ " Rebar w/Plastic Cap 

Credits

Lead: Brian Danforth

Assist.: Steven Sousa

Computations: Joanne Fetzer

CAD: reid

File Name: CR3731_Thursday_20090728 CR Page 2 with dxf.dwg

Job#: R23343

Reference(s)

RS of Alignment of North Livermore Ave.

RS Bk 4, Pg 55-69, Sheet 10 of 15

Alameda County Monument Id System (PTa...) **EC84G4**