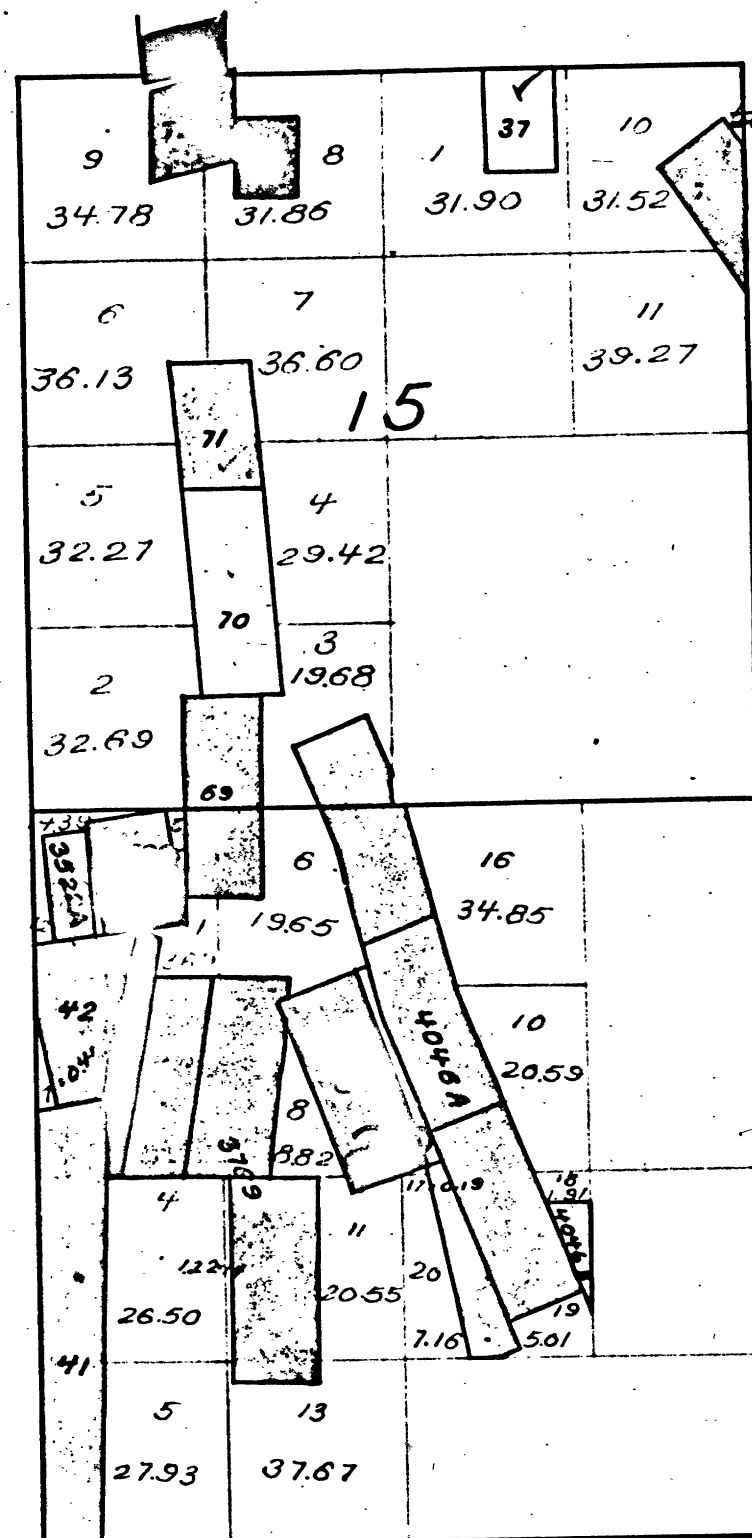


Township No 5 North. Range No 11 East, Mount Diablo Meridian, California.

T.5N. R.11E. Mount Diablo Meridian California.

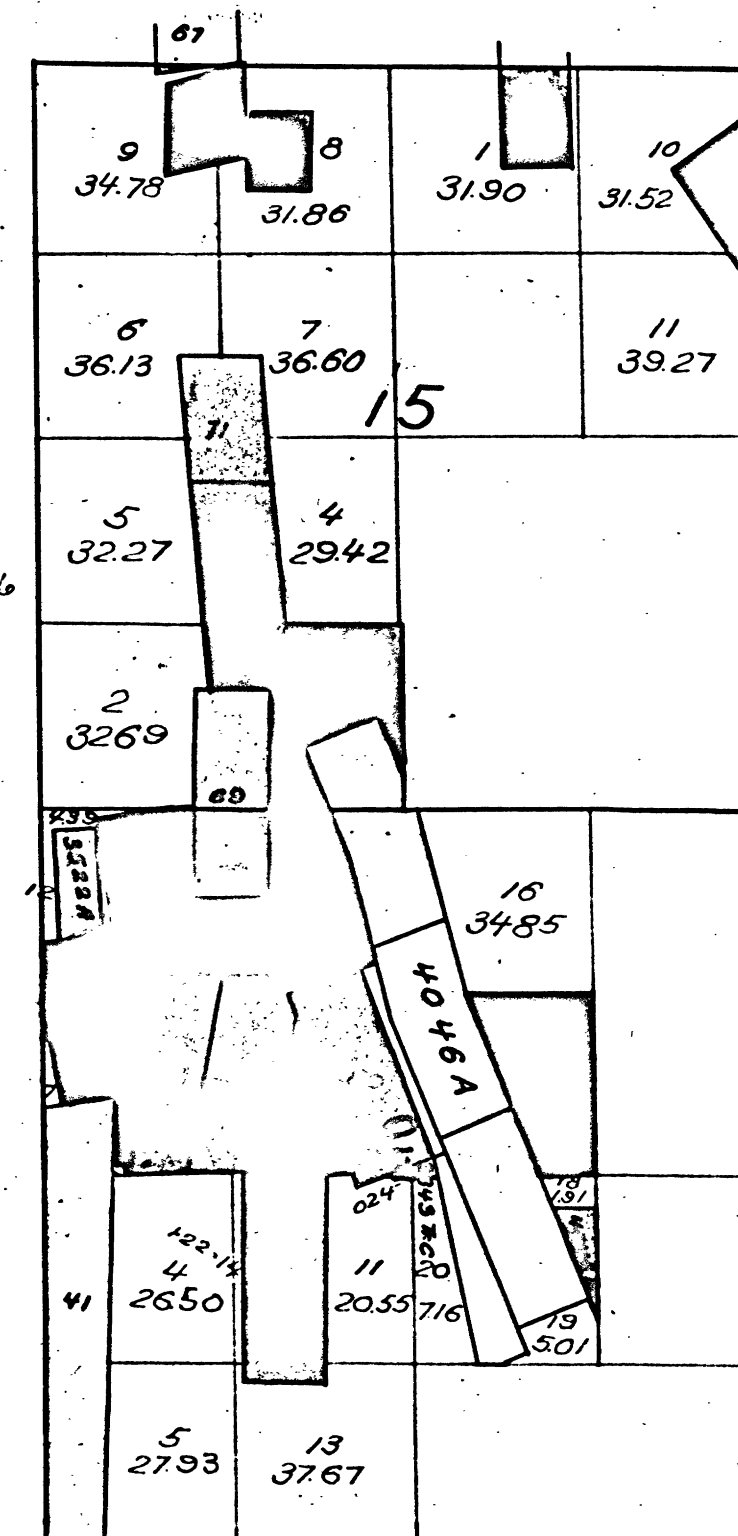


66
37 Hancock and Tibbitts Q.M. V35-25
279 - 41 Gwin (836)
286 - 42 North Paloma 286 V35-24
2121 - 67 Marlette V71-4
2160 - 69 White Swan V67-3
2202 - 70 Oneto V98-12
2203 - 71 Barattini V89-13
2208 - 72A McKinney and Grannis Mill Site V68-6
72B Q.M. V79-25
2484 - 76 Fink Gold
2921 - 80 Flour Sack Mill Site
V3393 Gwin Q.M.
V3522A Good Hope
V3769 Queen Con. Mg. Claim Stem Winder Loc. Queen Messenger V107-14-15-16
V885AYB Victor Mine & Mill Site
V4046A Flour Sack Con. Q.M. and Mill Site Virginia Q.M. Occidental California Crown Point Keystone California Mill Site V75-16
V4046B

The above diagram of Sections 15 and 22, Township No 5 North, Range No 11 East, Mount Diablo Meridian, California, is correctly constructed from official plats on file in this Office.
U.S. Surveyor General's Office,
San Francisco, California,
October 28, 1902.

W. S. Graham.
U.S. Surveyor General for California.

T.5N. R.11E. Mount Diablo Meridian.



66
37 Hancock and Tibbitts Q.M. V35-25
279 - 41 Gwin
286 - 42 North Paloma V35-24
2121 - 67 Marlette V71-4
2160 - 69 White Swan V67-3
2202 - 70 Oneto V98-12
2203 - 71 Barattini V89-13
2208 - 72A McKinney and Grannis Mill Site V68-6
72B Q.M. V79-25
2484 - 76 Fink Gold Q.M.
2921 - 80 Flour Sack
V3393 Gwin Mill Site
V3522A Good Hope Q.M.
V3769 Queen Con. Mg. Claim. Stem Winder Loc. Queen Messenger V107-14-15-16
V3843 Leonid Consolidated Placer Mine. Trace A B C D
V885AYB Victor Mine and Mill Site
V4046A Flour Sack Con. Q.M. and Mill Sites Virginia Q.M. Occidental California Crown Point Keystone California Mill Site V75-16
V4046B
V4473 Farrell & Co.

DEPARTMENT OF THE INTERIOR,
GENERAL LAND OFFICE,
Washington, D. C. January 14, 1903.
I hereby certify that this is a true copy
of the plat of official survey of the lands
to which it relates, on file in this office.

H. W. Langford
Recorder, General Land Office.

The above diagram of Sections 15 and 22, Township No 5 North, Range No 11 East, Mount Diablo Meridian, California, is correctly constructed from official plats on file in this Office.

U.S. Surveyor General's Office
San Francisco, California,
October 30, 1903.

W. S. Graham.
U.S. Surveyor General for California.