

RECORD OF SURVEY

PAGE 1 OF 8

OF THE RIGHT-OF-WAY OF STATE ROUTE 395 THROUGH
PORTIONS OF SECTIONS 10, 11, 14, 15, 23, 25, 26, & 36,
TOWNSHIP 1 SOUTH, RANGE 26 EAST, MT. DIABLO BASE
& MERIDIAN. IN THE UNINCORPORATED TERRITORY
OF THE COUNTY OF MONO, STATE OF CALIFORNIA.
RS 34-66

RECORDER'S STATEMENT

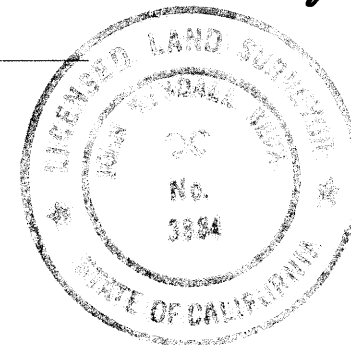
FILED THIS 14th DAY OF April, 1998, AT 9:31 AM IN BOOK 3 OF
RECORDS OF SURVEY AT PAGE 60-606, AT THE REQUEST OF THE STATE OF CALIFORNIA.
RENN NOLAN
MONO COUNTY RECORDER

INSTRUMENT No. #2135
FEE: No Fee
BY: Vera M. Mills
DEPUTY COUNTY RECORDER

COUNTY SURVEYOR'S STATEMENT

THIS MAP HAS BEEN EXAMINED IN ACCORDANCE WITH SECTION 8766 OF THE
LAND SURVEYOR'S ACT THIS 14th DAY OF April, 1998.

John K. Beck
JOHN K. BECK
DEPUTY MONO COUNTY SURVEYOR
L.S. 3884
EXP. 6-30-00

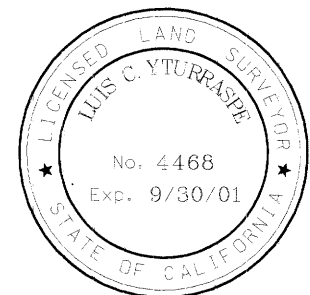


SURVEYOR'S STATEMENT

THIS MAP CORRECTLY REPRESENTS A SURVEY MADE BY ME OR UNDER
MY DIRECTION IN CONFORMANCE WITH THE REQUIREMENTS OF THE
LAND SURVEYORS ACT AT THE REQUEST OF THE STATE OF CALIFORNIA
BETWEEN MAY 1990 AND JULY 1996.

Luis C. Yturrape
LUIS C. YTURRAPE L.S. NO. 4468

Sept. 30, 2001
EXP. DATE



NOTE:

ALL VALUES ON THIS MAP ARE GRID,
UNLESS OTHERWISE NOTED.

TO OBTAIN A GROUND DISTANCE, DIVIDE
THE GRID DISTANCE BY THE GRID FACTOR.

MAPPING ANGLE AT PM 43.58 = 0°52'03"
CALIFORNIA COORDINATE SYSTEM (1983), ZONE 3
GEODETIC AZIMUTH = GRID AZIMUTH + MAPPING ANGLE
COMBINED GRID FACTOR IS AS INDICATED.

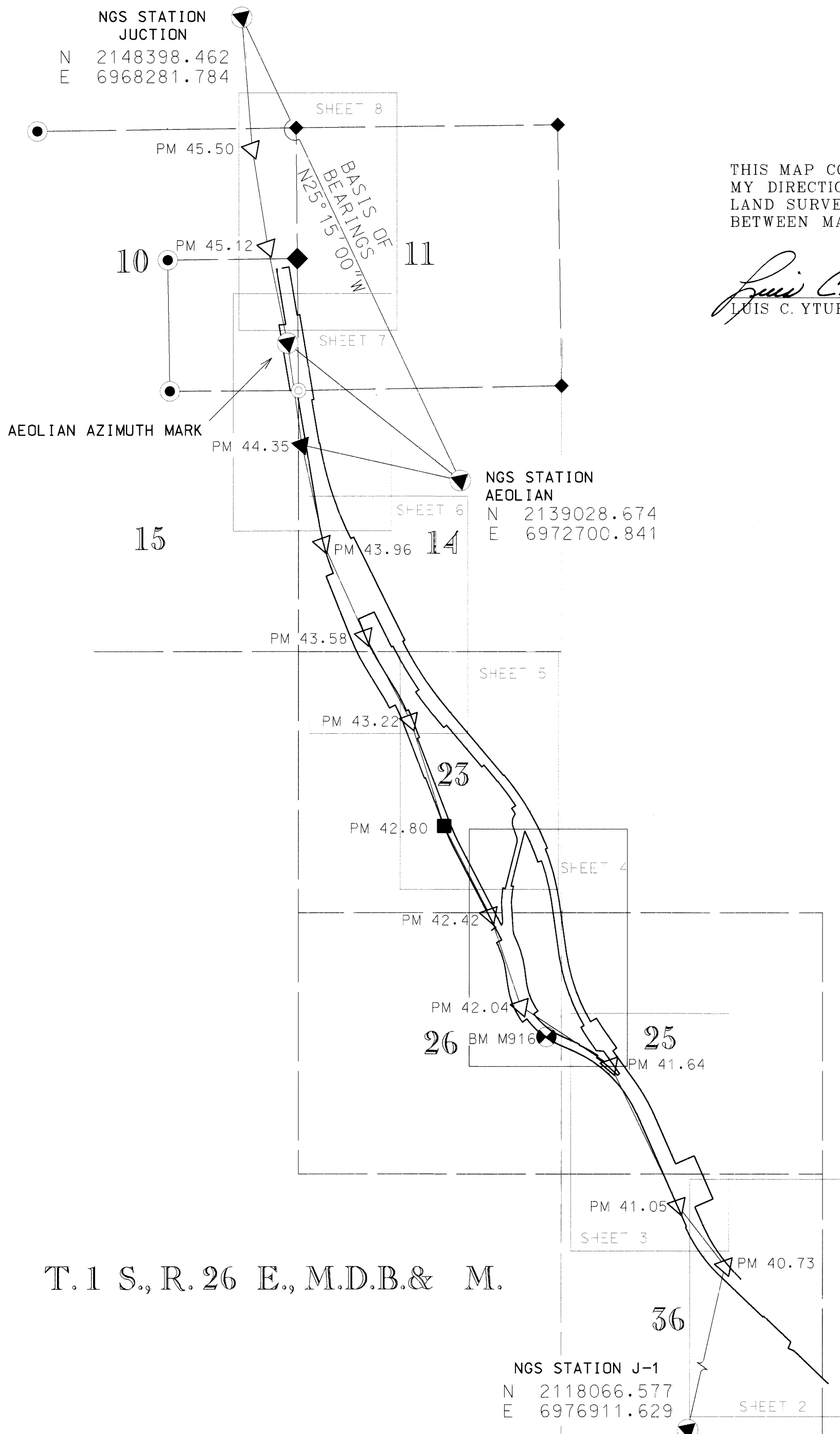
BASIS OF BEARINGS:

THE BEARINGS, DISTANCES & COORDINATES SHOWN ON
THIS MAP ARE BASED ON THE PUBLISHED CALIF.
COORDINATE SYSTEM OF 1983 (1986) VALUES
FOR STATIONS JUCTION, AEOLIAN AND J-1. THE
VALUES WERE DETERMINED BY A COMBINATION OF G.P.S.
AND CONVENTIONAL METHODS, AND ADJUSTED BY THE METHOD
OF LEAST SQUARES. THE ZONE 3 GRID BEARING FROM
AEOLIAN TO JUCTION IS N 25° 15' 00" W, AND IS THE BASIS
OF BEARINGS FOR THIS MAP.

LEGEND

- ◎ SET CADT BRASS CAP ON 2 1/2" IP, STAMPED AS NOTED.
- FOUND CADT BRASS CAP AS NOTED.
- CALCULATED POINT, NOTHING SET.
- ▽ CALTRANS 1.5" ALUM. CAP ON 3 / 4" REBAR, MARKED AS SHOWN, UNLESS OTHERWISE NOTED.
- FOUND NGS MONUMENT, DESCRIBED AS NOTED.
- ◆ FOUND LAND NET CORNER, DESCRIBED AS NOTED.
- FOUND 6" x 6" CONCRETE HWY RIGHT-OF-WAY MONUMENT.
- ▲ FOUND MONUMENT, DESCRIBED AS NOTED.
- RIGHT-OF-WAY LINES, STATE ROUTE MNO 395
- ⊠ FOUND BENCH MARK AS NOTED.

PROJECT MAP



T. 1 S., R. 26 E., M.D.B. & M.

RS 34-66