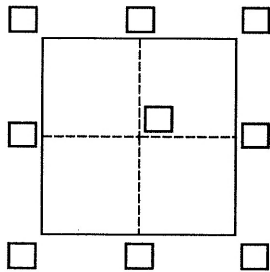


CORNER RECORD

Agency Index BK 103 PG 7Document Number CR 10586City of OAKLAND County of ALAMEDA, CaliforniaBrief Legal Description LOT 2319, FORESTLAND MANOR (18 M 54)

CORNER TYPE

Government Corner ☐ Control ☐
Meander ☐ Property ☒
Rancho ☐ Other ☐

Date of Survey June 24, 2017

COORDINATES (Optional)

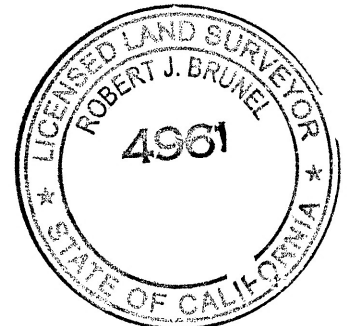
N. E. Elevation Units ☒ Metric ☐ U.S. Survey Foot ☐Horizontal Datum Zone Epoch Date Vertical Datum ☐ Complies with Public Resources Code §§8801-8819☐ Complies with Public Resources Code §§8890-8902PLS Act Ref.: ☒ 8765(d) ☐ 8771 ☐ 8773 ☐ Other:Corner/Monument: ☐ Left as found ☒ Established ☐ Rebuilt ☐ Pre-Construction☐ Found and tagged ☐ Reestablished ☐ Referenced ☐ Post-Construction

Narrative of corner identified and monument as found, set, reset, replaced, or removed:

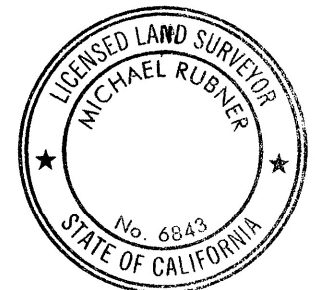
☒ See sheet #2 for description(s):

SURVEYOR'S STATEMENT

This Corner Record was prepared by me or under my direction in conformance with

the Professional Land Surveyors' Act on September 5, 2017Signed Robert J. Brunel P.L.S. or R.C.E. No. 4961

COUNTY SURVEYOR'S STATEMENT

This Corner Record was received 7 SEPTEMBER 2017and examined and filed 9 OCTOBER, 2017Signed Michael Rubner P.L.S. or R.C.E. No. 6843Title COUNTY SURVEYOR

County Surveyor's Comment

IT IS THE OPINION OF THE COUNTY SURVEYOR THAT THIS
SURVEY SHALL BE FILED AS A RECORD OF SURVEY
PER SECTION 8762(b)(4) & (5) OF THE LAND
SURVEYORS ACT

CORNER RECORD

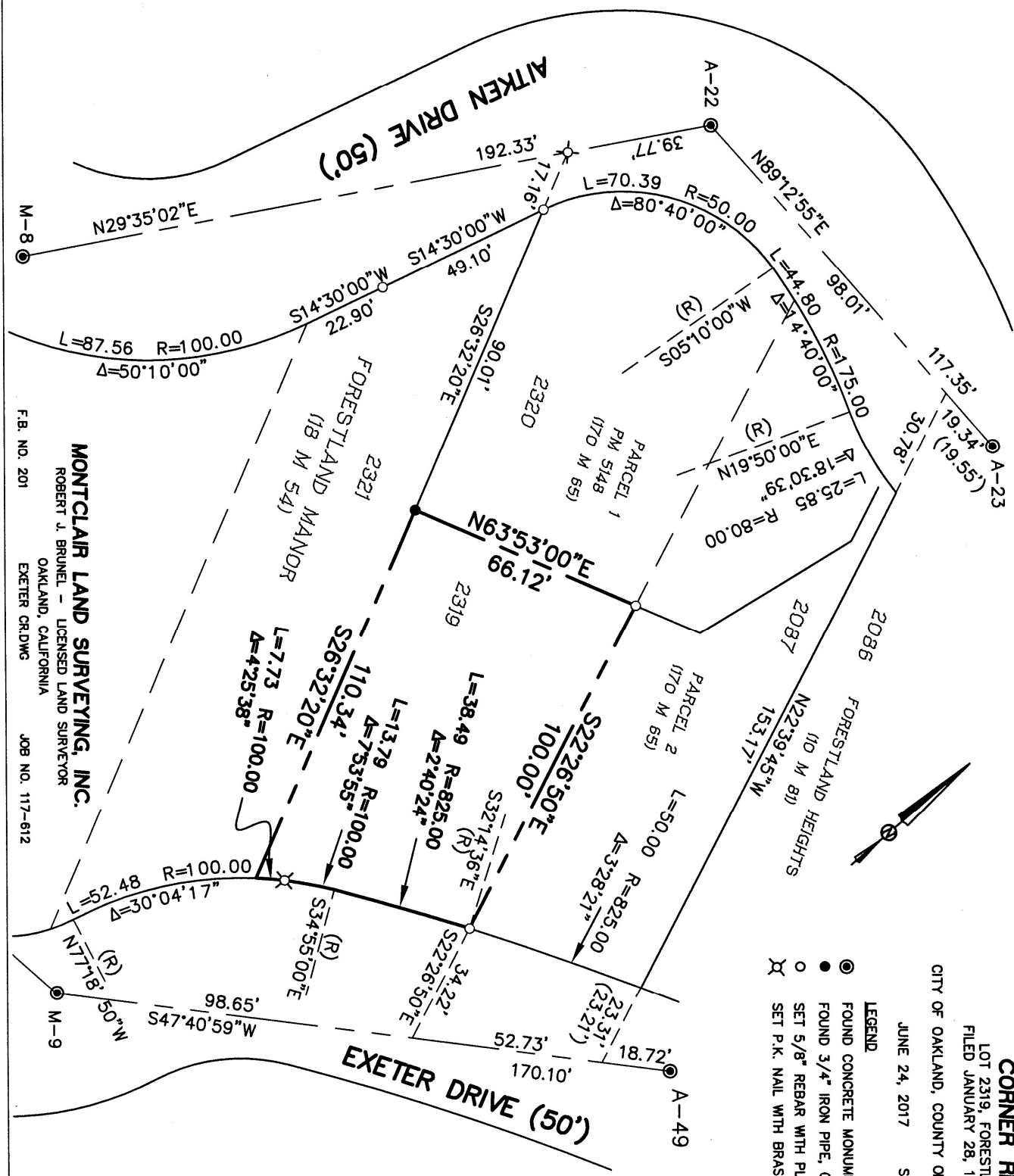
LOT 2319, FORESTLAND MANOR
FILED JANUARY 28, 1928 (18 M 54)

CITY OF OAKLAND, COUNTY OF ALAMEDA, CALIFORNIA

JUNE 24, 2017 SCALE: 1" = 40'

LEGEND

- FOUND CONCRETE MONUMENT PER (170 PM 65)
- FOUND 3/4" IRON PIPE, OPEN
- SET 5/8" REBAR WITH PLASTIC CAP, LS 4961
- ✕ SET P.K. NAIL WITH BRASS TAG, LS 4961



MONTCLAIR LAND SURVEYING, INC.

ROBERT J. BRUNEL - LICENSED LAND SURVEYOR

OAKLAND, CALIFORNIA

F.B. NO. 201

EXETER CRDWC

JOB NO. 117-612