

# CORNER RECORD

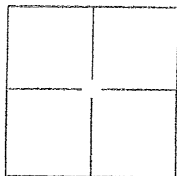
BK 44 Pg 54

City of BERKELEY

Document Number CR 4920

County of ALAMEDA, California

Brief Legal Description CITY MONUMENT B2023



## CORNER TYPE

Government Corner ☐ Control ☒  
 Meander ☐ Property ☐  
 Rancho ☐ Other ☐

Date of Survey 4/3/2012

## COORDINATES(Optional)

N. \_\_\_\_\_  
 E. \_\_\_\_\_  
 Zone \_\_\_\_\_ NAD27 ☐ NAD83 ☐  
 NAD83 Epoch \_\_\_\_\_  
 Elev. \_\_\_\_\_  
 Vert. Datum: NGVD29 ☐ NADV88 ☐  
 Meas. Units: Metric ☐ Imperial ☐

Corner - Left as found ☒ Found and tagged ☐ Established ☐ Reestablished ☐ Rebuilt ☐

Identification and type of corner found: Evidence used to identify or procedure used to establish or reestablish the corner:

FOUND MONUMENT PER CITY RECORDS

A description of the physical condition of the monument as found and as set or reset: FOUND

MONUMENT OK.

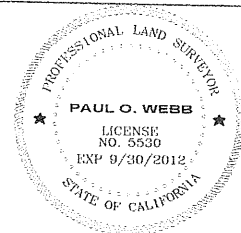
SET 4 5/8" REBARS WITH PUNCH FLUSH TO GROUND.

## SURVEYOR'S STATEMENT

This Corner Record was prepared by me or under my direction in conformance with

the Land Surveyor's Act on APRIL 11, 2012.

Signed Paul O Webb P.L.S. or R.C.E. No.: 5530



## COUNTY SURVEYOR'S STATEMENT

This Corner Record was received 4-25-2012 and examined

and filed 5-17-2012

Signed Russell R Penland P.L.S. or R.C.E. No.: 5726

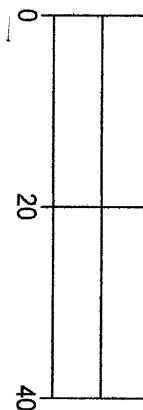
Title COUNTY SURVEYOR

County Surveyor's Comment \_\_\_\_\_

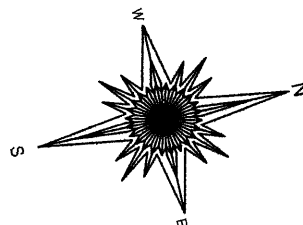




# B2023 TIE-OUT

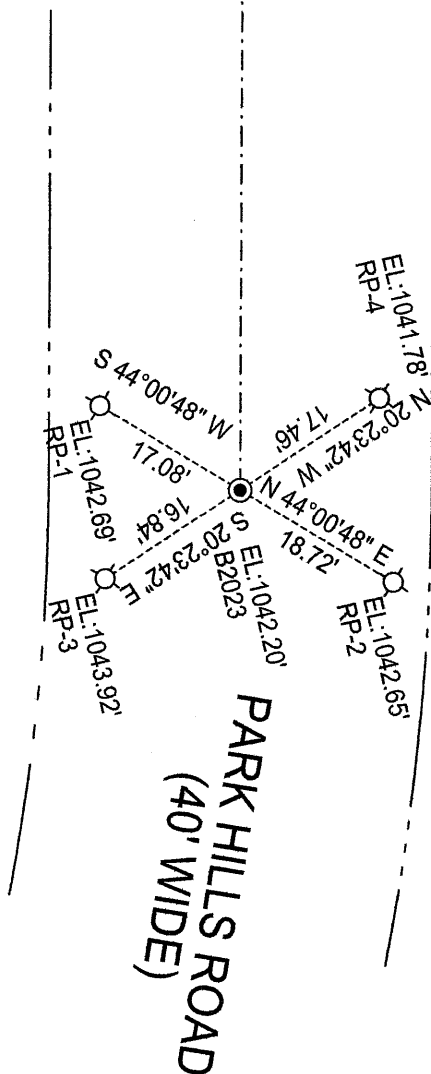
SCALE: 1 INCH = 20 FEET





APN: 63-3160-2




  
 BASIS OF BEARINGS
   

 N 76°47'42" W 112.55'



## LEGEND:

-  found City of Berkeley monument in well
-  set 5/8" rebar with punch

## BASIS OF BEARINGS:

The line between City monuments shown on Park Hills Road taken as N 76°47'42" W.