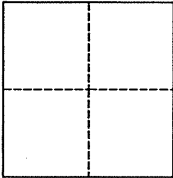


CORNER RECORD

Agency Index BK 102 PG 85Document Number CR 10540City of CASTRO VALLEY County of ALAMEDA, CaliforniaBrief Legal Description DY43X4 (ELROD DRIVE)**CORNER TYPE****COORDINATES (Optional)**Government Corner ☒ Control
Meander ☐ Property
Rancho ☐ Other

N. _____ E. _____

Elevation _____
Units Metric ☐ U.S. Survey Foot ☒

Horizontal Datum _____

Zone _____ Epoch Date _____

Vertical Datum _____

Date of Survey 07/24/2017☐ Complies with Public Resources Code §§8801-8819☐ Complies with Public Resources Code §§8890-8902PLS Act Ref.: ☒ 8765(d) ☐ 8771 ☐ 8773 ☐ Other:Corner/
Monument: ☐ Left as found ☐ Established ☐ Rebuilt ☒ Pre-Construction
☐ Found and tagged ☐ Reestablished ☐ Referenced ☐ Post-Construction

Narrative of corner identified and monument as found, set, reset, replaced, or removed:

☒ See sheet #2 for description(s):

FOUND 5/16" BRASS PIN SET IN CONCRETE FOR COUNTY MON IN MON WELL, DOWN 6",
SET FOUR CUT "X" REFERENCES AS SHOWN ON SHEET 2.

SURVEYOR'S STATEMENT

This Corner Record was prepared by me or under my direction in conformance with

the Professional Land Surveyors' Act on SEPTEMBER 8, 2017Signed [Signature] P.L.S. or R.C.E. No. LS 5837**COUNTY SURVEYOR'S STATEMENT**This Corner Record was received 4 AUGUST 2017and examined and filed 17 OCTOBER 2017Signed Michael Rubner P.L.S. or R.C.E. No. 6843Title COUNTY SURVEYOR

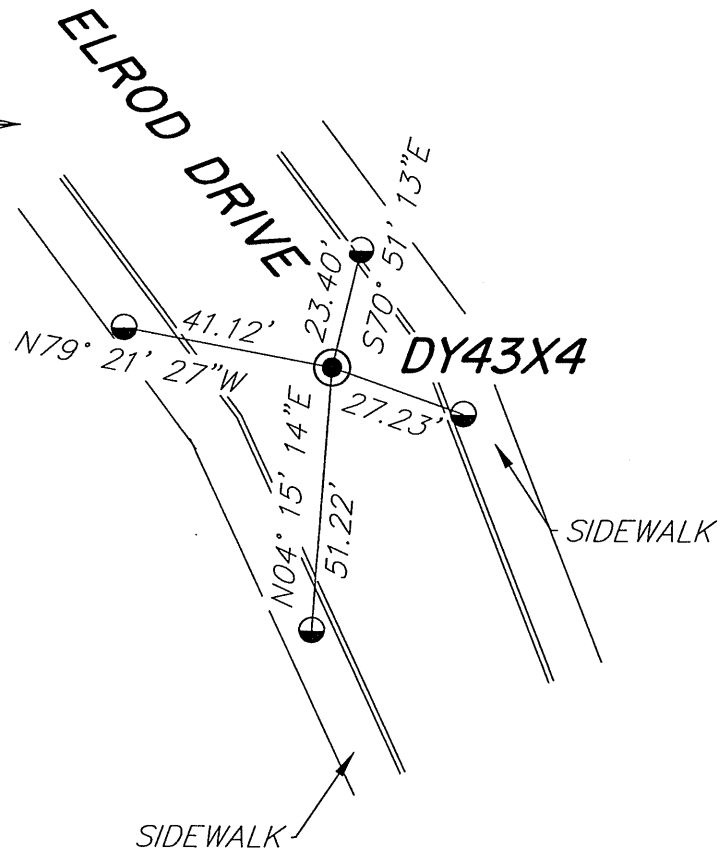
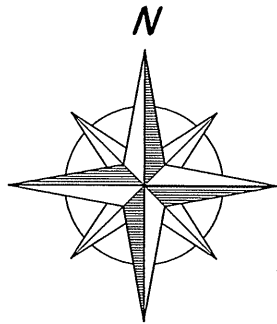
County Surveyor's Comment



SPEC 2322

DY43X4

NO SCALE



LEGEND

● FOUND ALAMEDA COUNTY MONUMENT
AS NOTED ON SHEET 1

○ SET CUT "X" UNLESS
OTHERWISE SHOWN

AA##A# ALAMEDA COUNTY MONUMENT ID

NOTE THAT BEARINGS ARE
APPROXIMATE AND ARE TO
BE USED FOR ANGLE
CALCULATIONS ONLY.