

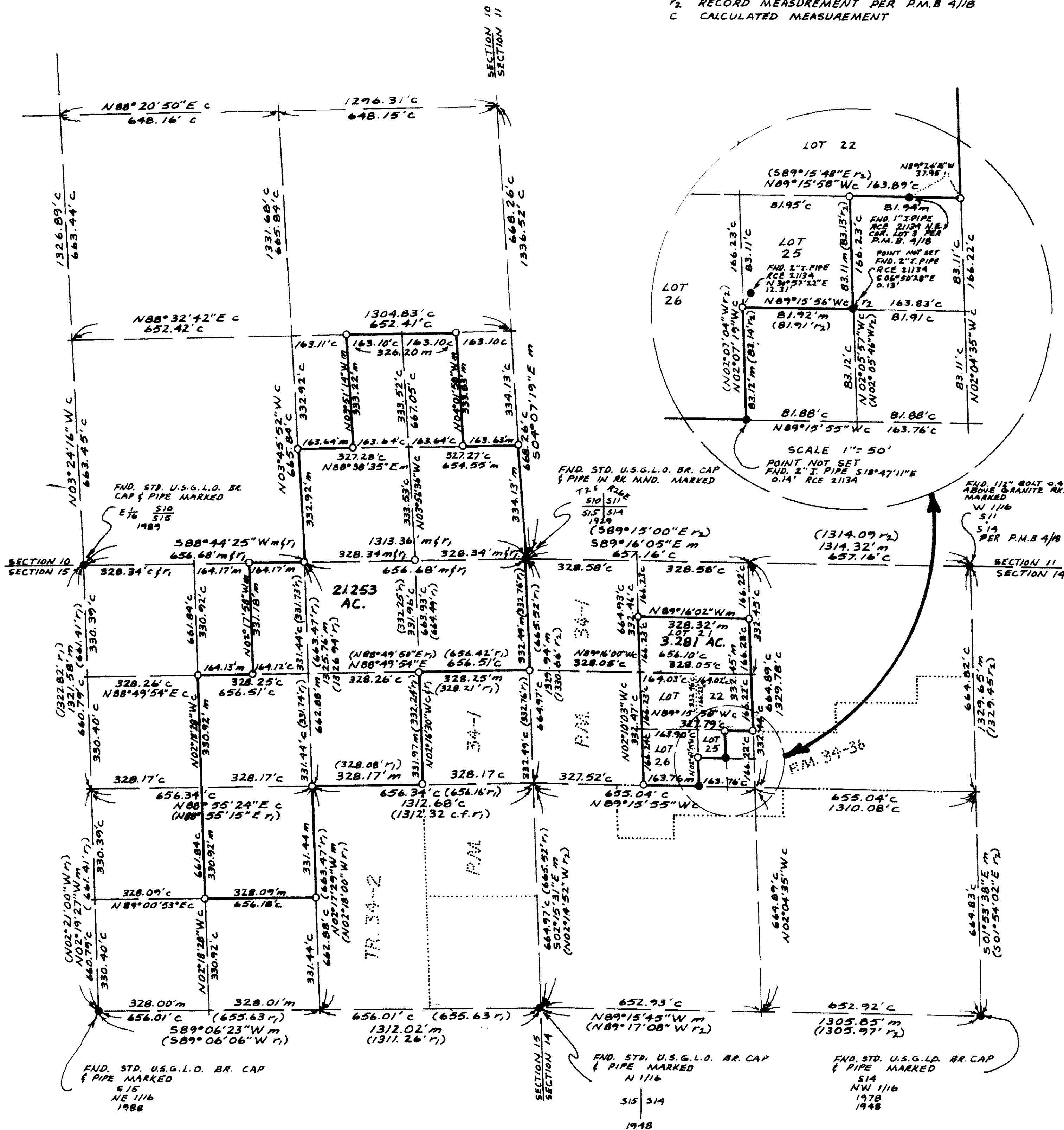
RECORD OF SURVEY 34-35

IN THE UNINCORPORATED TERRITORY OF THE COUNTY OF MONO, STATE OF CALIFORNIA BEING A SURVEY OF THE FOLLOWING DESCRIBED LAND IN TOWNSHIP 2 SOUTH, RANGE 26 EAST, M.D.M.:
 SECTION 10, E1/2NW1/4SE1/4SE1/4SE1/4, W1/2NE1/4SE1/4SE1/4SE1/4 AND S1/2SE1/4SE1/4SE1/4;
 SECTION 14, LOTS 21, 22, 25, AND 26;
 SECTION 15, N1/2NE1/4NE1/4NE1/4, SW1/4NE1/4NE1/4NE1/4, E1/2NE1/4NW1/4NE1/4NE1/4, SE1/4NW1/4NE1/4NE1/4, AND NE1/4SW1/4NE1/4NE1/4



SCALE 1"=200'

- FOUND MONUMENT AS NOTED
- SET 1" I. PIPE W/ PLUG LS 4428 EXCEPT AS NOTED
- m MEASURED
- r₁ RECORD MEASUREMENT PER P.M.B. 1/4
- r₂ RECORD MEASUREMENT PER P.M.B. 4/18
- c CALCULATED MEASUREMENT



R.S. & P. 71A