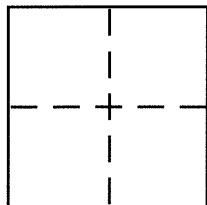


CORNER RECORDDocument Number CR 7469
County of ALAMEDA, CaliforniaCity of OAKLANDBrief Legal Description LOT 7, BLK. L, RE-SUB. PINEHAVEN (3 M 53)**CORNER TYPE**

Government Corner ☐ Control ☐
 Meander ☐ Property ☒
 Rancho ☐ Other ☐
 Date of Survey JULY 20, 2015

COORDINATES (Optional)

N. _____
 E. _____
 Zone _____ NAD27 ☐ NAD83 ☐
 NAD83 Epoch _____
 Elev. _____
 Vert. Datum: NGVD29 ☐ NAVD88 ☐
 Meas. Units: Metric ☐ Imperial ☐

Corner – Left as found ☐ Found and tagged ☐ Established ☒ Reestablished ☐ Rebuilt ☐

Identification and type of corner found: Evidence used to identify or procedure used to establish or reestablish the corner:

SEE OTHER SIDE

A description of the physical condition of the monument as found and as set or reset: _____

SEE OTHER SIDE**SURVEYOR'S STATEMENT**

This Corner Record was prepared by me or under my direction in conformance with

the Land Surveyor's Act on AUGUST 10, 2015

Signed Robert J. Brunel P.L.S. or R.C.E. No. 4961

COUNTY SURVEYOR'S STATEMENT

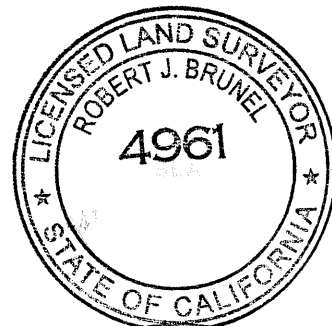
This Corner Record was received 8-11-15

and examined and filed 8-18-15

Signed Rick Land P.L.S. or R.C.E. No. 5726

Title COUNTY SURVEYOR

County Surveyor's Comment _____

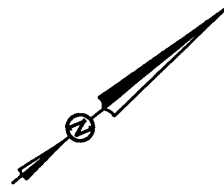


CORNER RECORD

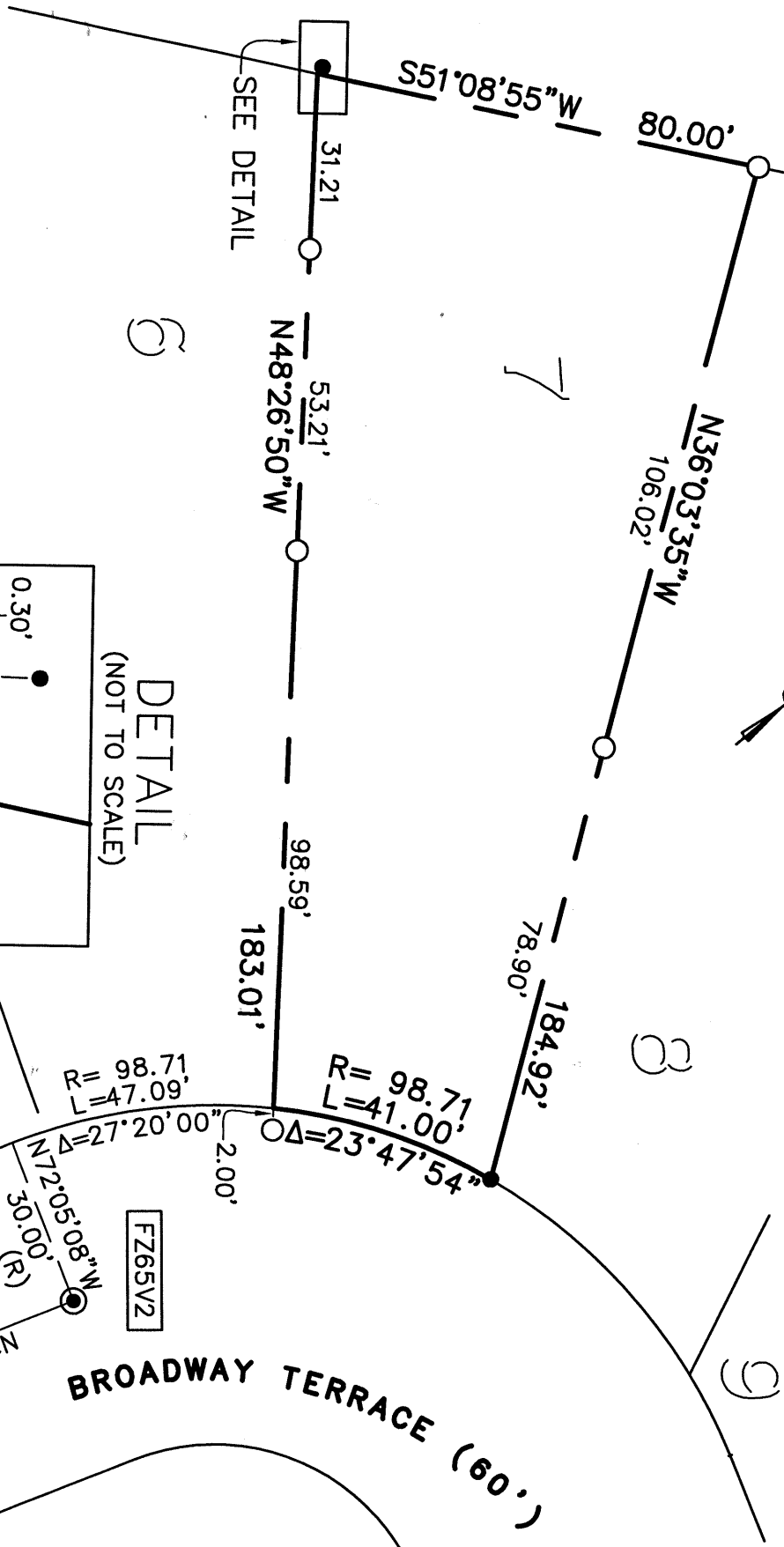
LOT 7, BLOCK L, A RE-SUBDIVISION
OF PINEHAVEN, FILED MARCH 16, 1923 (3 M 53)
CITY OF OAKLAND, ALAMEDA COUNTY, CALIFORNIA

AUGUST 2015

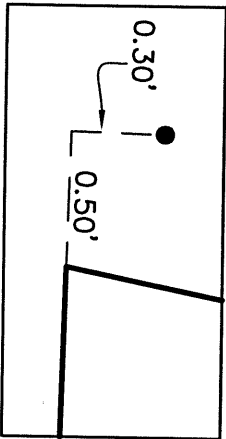
SCALE: 1" = 30'



- FOUND CONCRETE MONUMENT PER (43 M 82-A)
- FOUND 1/2" REBAR WITH PLASTIC CAP, LS 5003, NOT OF RECORD
- SET 5/8" REBAR WITH PLASTIC CAP, LS 4961



DETAIL (NOT TO SCALE)



BROADWAY TERRACE (60')

MORAN ENGINEERING, INC.

BERKELEY, CALIFORNIA

BROADWAY TERR-CR.DWG

JOB NO. 15-9065