

~~UNCLAS~~
~~CONFIDENTIAL~~

REVELATION OF THE CONTENTS
OF THIS DRAWING TO AN UNAUTHOR-
IZED PERSON IS PROHIBITED BY LAW.
SEE ESPIONAGE ACT 50 USC 3132.

CONFIDENTIAL

REVELATION OF THE CONTENTS
OF THIS DRAWING TO AN UNAUTHOR-
IZED PERSON IS PROHIBITED BY LAW.
SEE ESPIONAGE ACT 50 USC 3132.

U.S. SUBMARINE SS T 2

BOOKLET OF GENERAL PLANS

ORDER OF PLANS

SHEET NO. 1 COVER
SHEET NO. 2 GEN DIMENSIONS & DATA
SHEET NO. 3 OUTBOARD PROFILE
SHEET NO. 4 INBOARD PROFILE
SHEET NO. 5 MAIN DECK
SHEET NO. 6 PLATFORM DECK
SHEET NO. 7 HOLD
SHEET NO. 8 MIDSHIP & TYPE CROSS SECTIONS

~~UNCLAS~~
~~CONFIDENTIAL~~

REVELATION OF THE CONTENTS
OF THIS DRAWING TO AN UNAUTHOR-
IZED PERSON IS PROHIBITED BY LAW.
SEE ESPIONAGE ACT 50 USC 3132.

CORRECTED TO SUIT SHIP

REV	PLACE	DATE	SUPV'R OF SHIPBUILDING
A	GROTON, CONN	5-28-54	R.G. Smith Cdr.
B	REVISED AT CHASNAVSHIPYD TO AGREE WITH SHIP AS CHECKED 3/3/55	5-4-55	W. H. H. H.
C	REVISED AT KVINAVSTA TO AGREE WITH SHIP AS CHECKED 3/3/58	3-5-58	J. A. H. H.
D	REVISED AT KVEST NAVSTA TO AGREE WITH SHIP AS OF 10/18/63	10-18-63	J. A. H. H.
E	U.S. NAVAL STATION - KEY WEST, FLA.	20 MAY 1966	B. A. H. H.

CONFIDENTIAL

REVELATION OF THE CONTENTS
OF THIS DRAWING TO AN UNAUTHOR-
IZED PERSON IS PROHIBITED BY LAW.
SEE ESPIONAGE ACT 50 USC 3132.

3921-09

ELECTRIC BOAT DIVISION, GROTON, CONN.
GENERAL DYNAMICS CORPORATION

DATE OCT 5, 1963

DRAWN JHB

APPROVED

TRACED

REPROVAL

CHECKED RLD

EXAMINED

APPROVED

10/13/53

R. G. Smith CDR

FOR SUPERVISOR OF SHIPBUILDING, USN

BUREAU OF SHIPS NO.

SST2 50107H 1285511

REV

D

PRINCIPAL DIMENSIONS		HEIGHTS		CAPACITIES & VOLUMES OF TANKS											
LENGTH OVERALL	130'-1"	LOWEST POINT OF KEEL TO TOP OF STRENGTH HULL AMIDSHIPS ON E. OF SHIP	14'-9 3/16"	MAIN BALLAST TANKS			GALLONS	TONS SALT WATER OIL		FUEL OIL TANKS		GALLONS	TONS SALT WATER OIL		
LENGTH BETWEEN PERPENDICULARS	124'-6"	LOWEST POINT OF KEEL TO TOP OF BRIDGE DECK	19'-11 3/16"	NO. 1 MAIN BALLAST			3090	11.80		NO. 1 FUEL OIL		1736	6.63 5.39		
LENGTH OF STRAIGHT KEEL	46'-1"			NO. 2 MAIN BALLAST			3853	14.71		COLLECTING		118	0.45 0.37		
BREADTH MOULDED	13'-6"	LOWEST POINT OF KEEL TO TOP OF HIGHEST EXTENDED POSITION OF PERISCOPE	41'-6 3/4"	NO. 3A& 3B MAIN BALLAST			2506	9.57		EXPANSION		463	1.77 1.44		
BREADTH EXTREME	13'-6 3/8"			NO. 4 MAIN BALLAST			1833	7.00		NO. 2 FUEL OIL		1094	4.18 3.40		
DRAFT SURFACE CONDITION TO UNDERSIDE OF KEEL PLATE (MEAN)	12'-6 1/4"	LOWEST POINT OF KEEL TO BOW ANCHOR LIGHT	22'-8 3/4"	TOTAL			11282	43.08		NO. 3 FUEL OIL		789	3.01 2.45		
RATIO LENGTH TO BEAM	9.2									NO. 4 FUEL OIL		1179	4.50 3.66		
SHAFT & PARALLEL TO & 6'-9" ABOVE BASE LINE		LOWEST POINT OF KEEL TO MASTHEAD LIGHT	31'-11 1/4"							CLEAN FUEL OIL (95% NET CAP)		115	0.44 0.36		
RUDDER AXIS AFT OF AP	4'-1"									TOTAL		5494	20.98 17.07		
NUMBER OF FRAMES	77	LOWEST POINT OF KEEL TO STERN ANCHOR LIGHT	18'-2 3/4"	VARIABLE BALLAST TANKS							LUBRICATING OIL TANK		276		
SCREW CENTER (OF ID. RAKE) AT E. OF SHIP IS 11'-3 1/2" AFT OF AP											RED. GEAR L.O. SUMP (75% NET CAP)		51		
FRAME SPACING-FP TO FR #1-20", FR 1 TO FR 22-19", FR 22 TO FR 29-20 1/2"		LOWEST POINT OF KEEL TO STERN LIGHT	17'-2 3/4"	FORWARD TRIMMING			973	3.71		SANITARY TANK		GALLONS 184	F.W. 0.63		
FR 29 TO FR 35-19", FR 35 TO FR 42-20 1/2", FR 42 TO FR 77-19", FR 77 TO AP-9"				AUXILIARY NO. 1			576	2.20							
		LOWEST POINT OF KEEL TO SIDE LIGHT	22'-11 3/4"	AUXILIARY NO.2			576	2.20		FRESH WATER		GALLONS 583	F.W. 2.17		
				AFT TRIMMING			1070	4.08							
				TOTAL			3195	12.19		NEGATIVE TANK		GALLONS 574.7	S.W. 2.18		
				V.C.G., L.C.G. & FLOODABLE VOLUMES OF MAIN WATERTIGHT COMPARTMENTS											
				COMPT. NO.	VOL. (CU.FT.)	VOL. (GALS.)	VOL. (TONS)	V.C.G. (FT.) A.B.L.	L.C.G. AFT OF F.P.						
				FWD. TORP. ROOM	1124	8409	32.11	8.0	24.0						
				CREWS QTRS, FWD. BATT. OFF. QTRS. & AFT BATT.	2816	21066	80.46	8.75	50.8						
				ENG. & MOTOR ROOM	2940	21994	84.00	7.25	85.5						

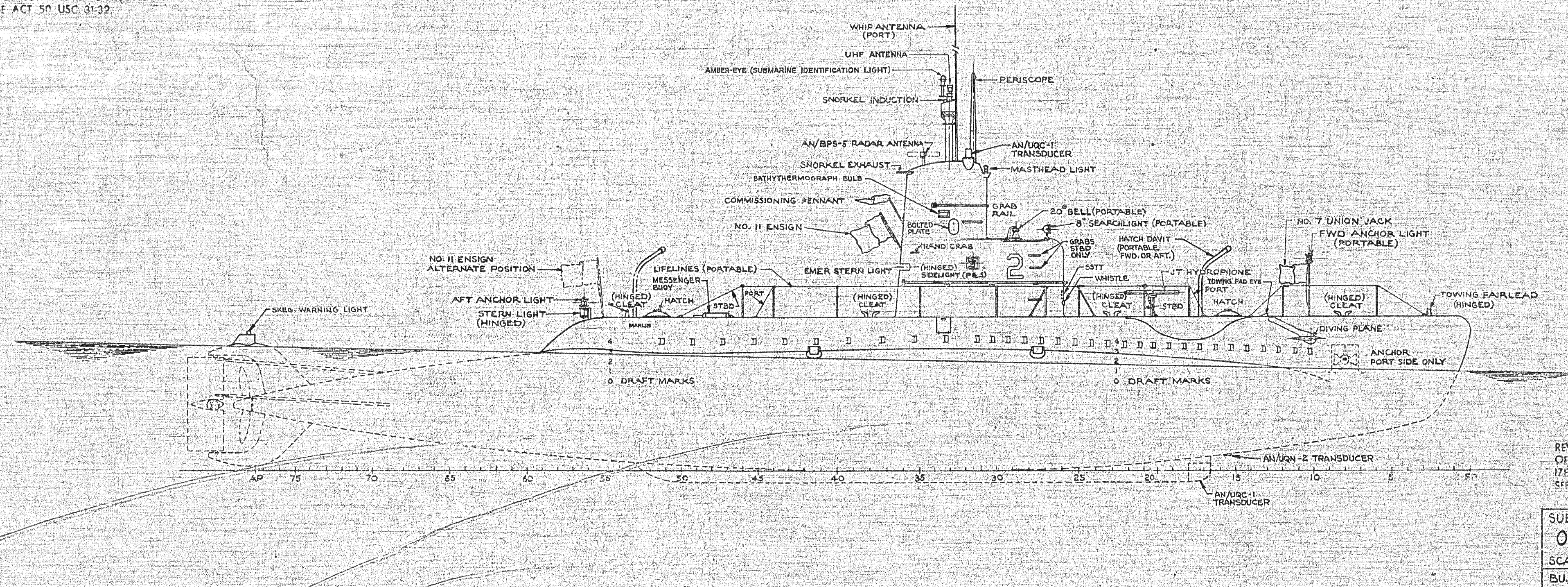
CONFIDENTIAL
REVELATION OF THE CONTENTS OF THIS DRAWING TO AN UNAUTHORIZED PERSON IS PROHIBITED BY LAW. SEE ESPIONAGE ACT 50 USC 3132.

CONFIDENTIAL
REVELATION OF THE CONTENTS OF THIS DRAWING TO AN UNAUTHORIZED PERSON IS PROHIBITED BY LAW. SEE ESPIONAGE ACT 50 USC 3132.

SUBMARINE - SST2
GEN DIMENSIONS & DATA
SHEET NO. 2
BU SHIPS NO. SST2-SO107-H-1285511

CONFIDENTIAL

REVELATION OF THE CONTENTS
OF THIS DRAWING TO AN UNAUTHOR-
IZED PERSON IS PROHIBITED BY LAW.
SEE ESPIONAGE ACT 50 USC 3132



CONFIDENTIAL

REVELATION OF THE CONTENTS
OF THIS DRAWING TO AN UNAUTHOR-
IZED PERSON IS PROHIBITED BY LAW.
SEE ESPIONAGE ACT 50 USC 3132

SUBMARINE:- SST2

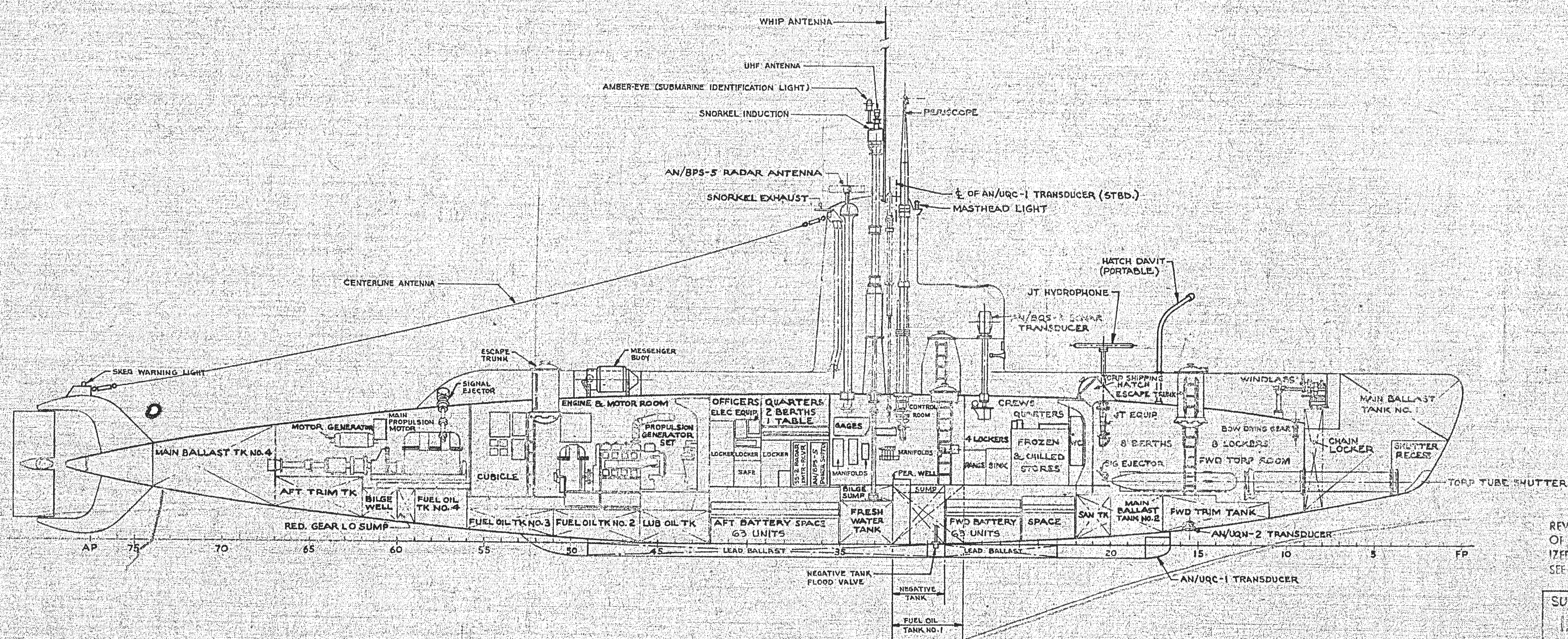
OUTBOARD PROFILE

SCALE:- 1"=1'-0" SHEET NO. 3

BU. SHIPS NO. SST2-SO107-H-128551

CONFIDENTIAL

REVELATION OF THE CONTENTS
OF THIS DRAWING TO AN UNAUTHOR-
IZED PERSON IS PROHIBITED BY LAW.
SEE ESPIONAGE ACT 50 USC 3137.



CONFIDENTIAL

REVELATION OF THE CONTENTS
OF THIS DRAWING TO AN UNAUTHOR-
IZED PERSON IS PROHIBITED BY LAW.
SEE ESPIONAGE ACT 50 USC 3137.

SUBMARINE - S5T2

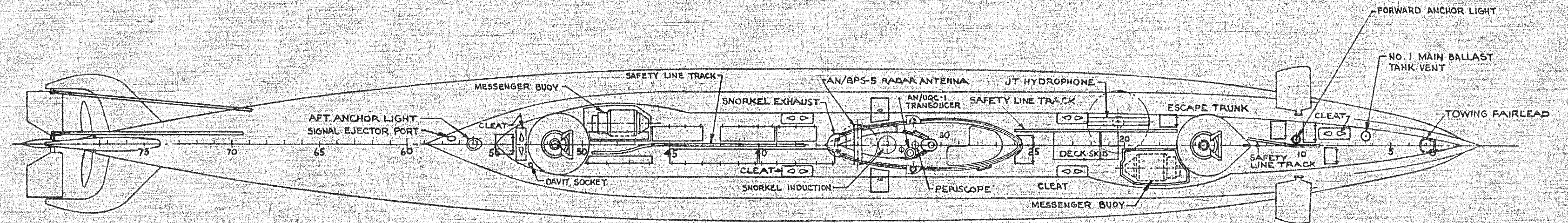
INBOARD PROFILE

SCALE - 1" = 10' SHEET NO. 4

B.U. SHIPS NO. S5T2-50107-R-1285511

CONFIDENTIAL

REVELATION OF THE CONTENTS
OF THIS DRAWING TO AN UNAUTHOR-
IZED PERSON IS PROHIBITED BY LAW.
SEE ESPIONAGE ACT 50 USC 3132



CONFIDENTIAL

REVELATION OF THE CONTENTS
OF THIS DRAWING TO AN UNAUTHOR-
IZED PERSON IS PROHIBITED BY LAW.
SEE ESPIONAGE ACT 50 USC 3132

SUBMARINE: - SST2

MAIN DECK

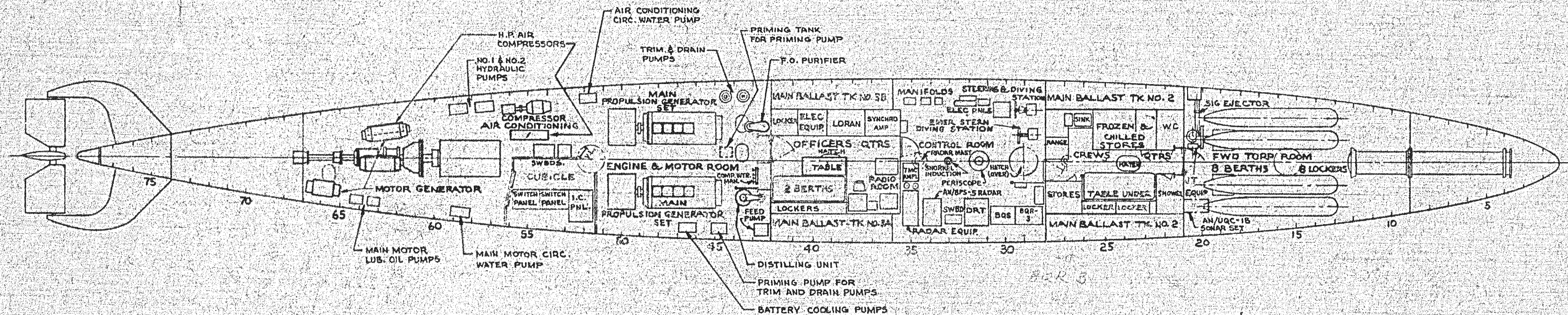
SCALE: $\frac{1}{8}$ " = 1'-0"

SHEET NO. 5

BU. SHIPS NO. SST2-50107-H-1285511

CONFIDENTIAL

REVELATION OF THE CONTENTS
OF THIS DRAWING TO AN UNAUTHOR-
IZED PERSON IS PROHIBITED BY LAW.
SEE ESPIONAGE ACT 50 USC 3132.



CONFIDENTIAL

REVELATION OF THE CONTENTS
OF THIS DRAWING TO AN UNAUTHOR-
IZED PERSON IS PROHIBITED BY LAW.
SEE ESPIONAGE ACT 50 USC 3132.

SUBMARINE: -SST2

PLATFORM DECK

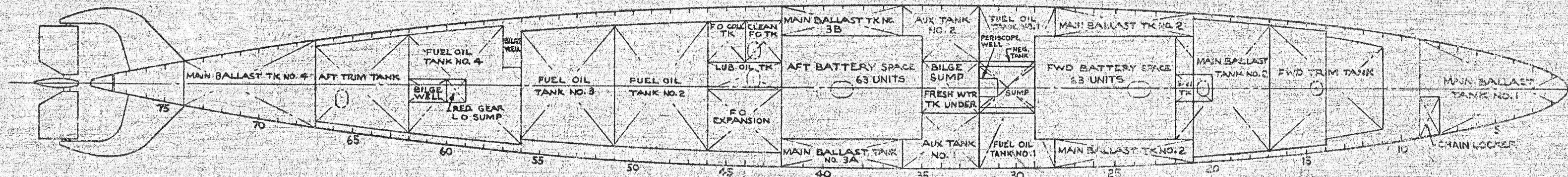
SCALE: $\frac{1}{8}$ " = 1'-0"

SHEET NO. 6

BU. SHIPS NO. SST2-SO107-H-1285511

CONFIDENTIAL

REVELATION OF THE CONTENTS
OF THIS DRAWING TO AN UNAUTHOR-
IZED PERSON IS PROHIBITED BY LAW.
SEE ESPIONAGE ACT 50 USC 3132



CONFIDENTIAL

REVELATION OF THE CONTENTS
OF THIS DRAWING TO AN UNAUTHOR-
IZED PERSON IS PROHIBITED BY LAW.
SEE ESPIONAGE ACT 50 USC 3132.

SUBMARINE:-SST2

HOLD

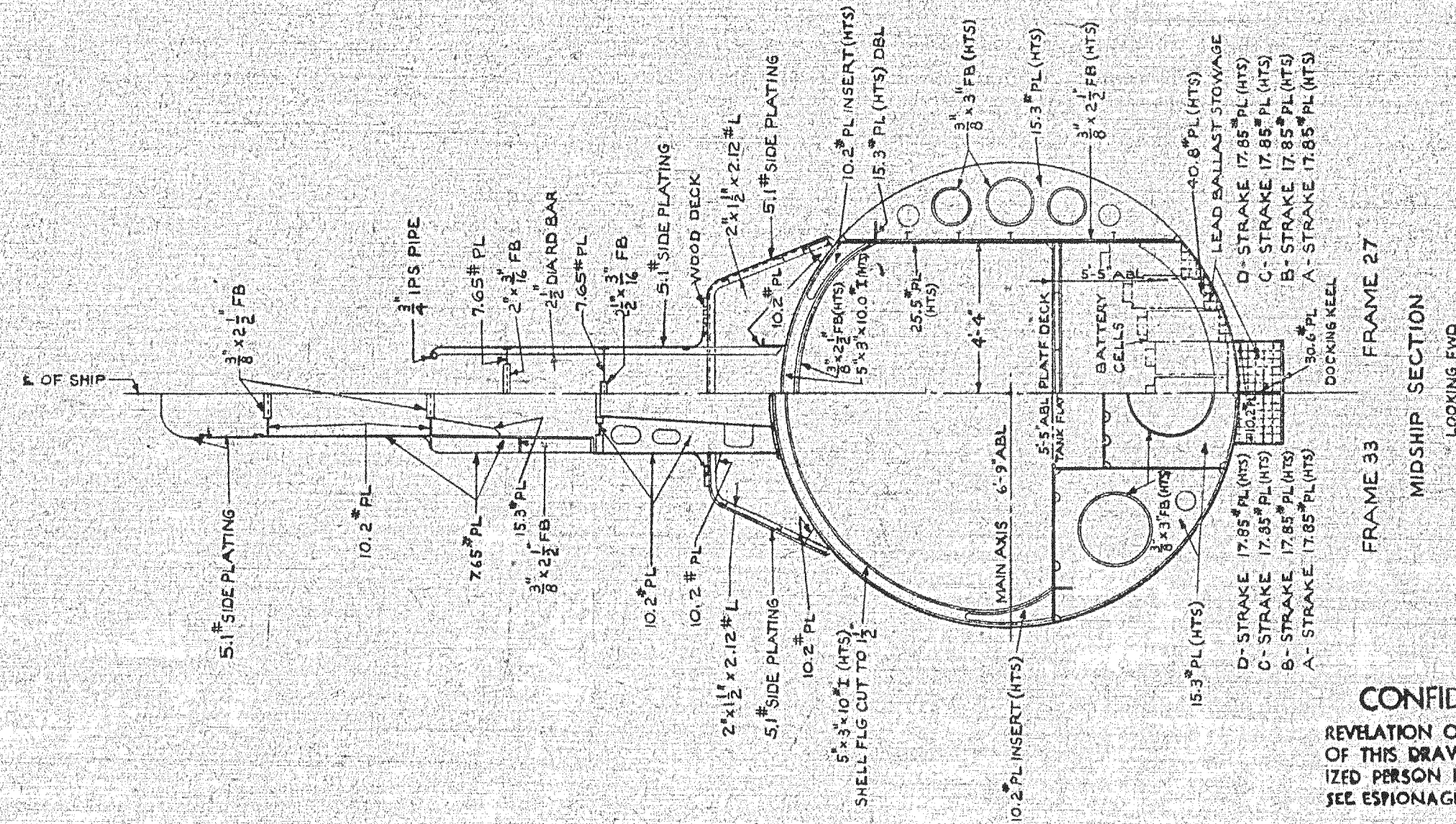
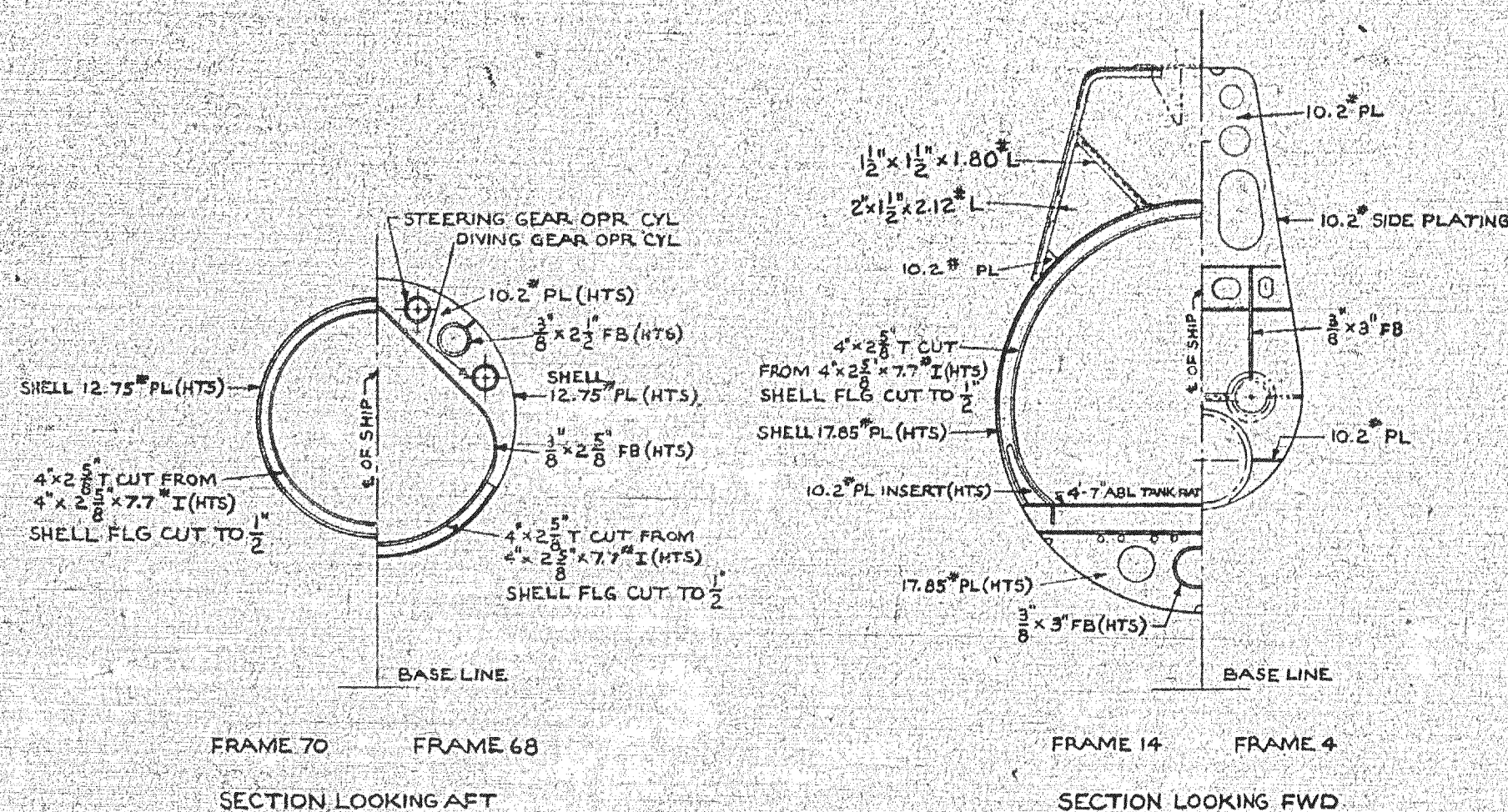
SCALE:- $\frac{1}{8}$ "=1'-0"

SHEET NO. 7

BU. SHIPS NO. SST2-50107-H-1285511

CONFIDENTIAL

REVELATION OF THE CONTENTS
OF THIS DRAWING TO AN UNAUTHOR-
IZED PERSON IS PROHIBITED BY LAW.
SEE ESPIONAGE ACT 50 USC 3132.



CONFIDENTIAL

REVELATION OF THE CONTENTS
OF THIS DRAWING TO AN UNAUTHOR-
IZED PERSON IS PROHIBITED BY LAW.
SEE ESPIONAGE ACT 50 USC 3132.

SUBMARINE: SST 2
MIDSHIP & TYPE
CROSS SECTIONS
SCALE: $\frac{1}{4} = 1'-0"$ SHEET NO. 8
BU. SHIPS NO. SST2- 50107-H-1285511