

# PARCEL MAP

DIVISION OF  
A PORTION OF LOT 19  
"LA LOMA PARK"  
BERKELEY CALIFORNIA

BY:  
THEODORE V. TRONOFF  
CIVIL ENGINEER AND SURVEYOR INC.  
1617 UNIVERSITY AVE.  
BERKELEY, CALIFORNIA  
SCALE: 1 IN = 20 FT.  
JUNE 21, 1974

## SURVEYOR'S CERTIFICATE

This map was prepared by me or under my direction and is based upon a field survey in conformance with the requirements of the Subdivision Map Act at the request of Mrs. Gui deAngulo on June 3, 1974. I hereby certify that it conforms to all provisions of applicable state law and local ordinances have been complied with.

(Signed and sealed) Theodore V. Tronoff  
Theodore V. Tronoff, Jr. R.C.E. 12104

## CITY ENGINEER'S CERTIFICATE

This map has been examined this 30<sup>th</sup> day of Oct., 1974, for conformance with the requirements of Section 11575 of the Subdivision Map Act, and Article VI of the Subdivision Ordinance of the City of Berkeley.

Roy E. Oakes  
City Engineer, City of Berkeley, Calif.  
R.C.E. No. 8595

## RECORDER'S CERTIFICATE

Filed this 6<sup>th</sup> day of November, 1974, at 4:20 P.M. in Book 84 of Parcel Maps at Page 68 at the request of Theodore V. Tronoff, Jr.

Serial No. 74-142823 B5<sup>00</sup>

Jack Blue By: Susan Leeper  
County Recorder Deputy

## BASIS OF BEARING

The Bearings on this Map are based on the bearing N.6°46'30"E. of the southeast right of way line of Maybeck Twin Drive (Road Easement) as shown on "Record of Survey Maybeck-Gannon Property" filed on April 14, 1959, in Book 3, Page 107, Records of Survey, Alameda County Records.

## ELEVATION DATUM

The elevation datum on this map is based on City of Berkeley Datum - Intersection of Buena Vista Ave. and La Loma Ave. Southwest Corner, South Curb Return-Top Curb Elev.=601.7

## OWNER & SUBDIVIDER

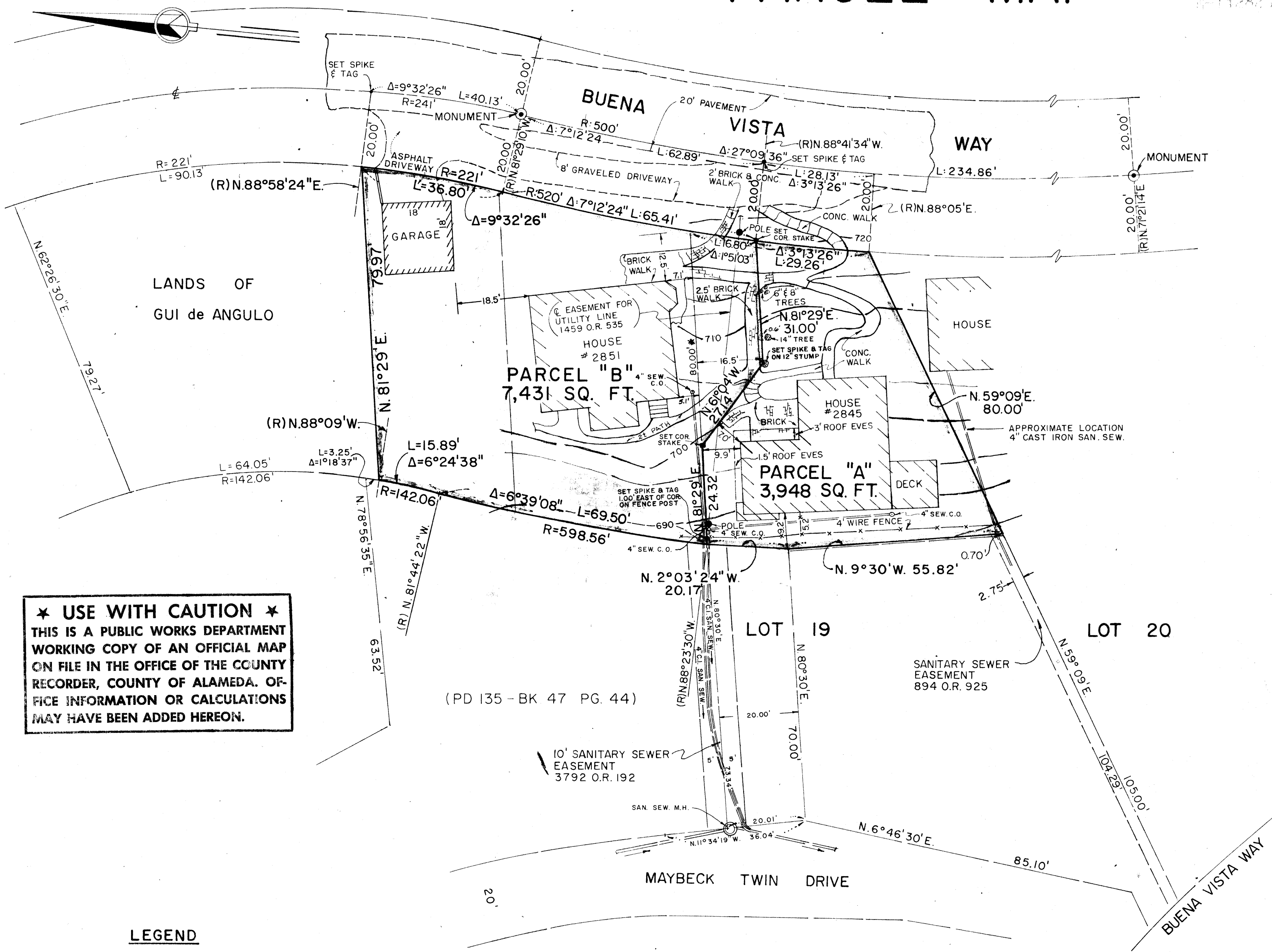
GUI de ANGULO R.E.894 PGS. 925,926 & 927.  
4229 21ST STREET, SAN FRANCISCO, CALIF.

PM 1489

SHEET 1 OF 1  
Survey No. 8912

Map Bk 84 Pg. 68 FILED 11-6-74

84/68



★ USE WITH CAUTION ★  
THIS IS A PUBLIC WORKS DEPARTMENT  
WORKING COPY OF AN OFFICIAL MAP  
ON FILE IN THE OFFICE OF THE COUNTY  
RECORDER, COUNTY OF ALAMEDA. OF-  
FICE INFORMATION OR CALCULATIONS  
MAY HAVE BEEN ADDED HEREON.

## LEGEND

- 2" X 2" Stake
- Lines as shown on "Property  
Division Map 135" Filed in Book  
47, Page 44, Alameda County Records.

This map has been approved by the Planning Commission, City of Berkeley, at its meeting of Sept. 15, 1974

and when recorded this map becomes the official map of this land division.

11/20/74 Date  
J. J. Beck Secretary, Planning Commission

7-142823