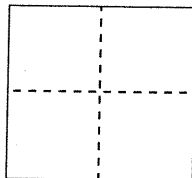


CORNER RECORDDocument Number CR 6439City of OaklandCounty of Alameda, CaliforniaBrief Legal Description City of Oakland monument 10/C-R/9, at 21st Street and Lakeside Drive**CORNER TYPE**

Government Corner ☐ Control ☒
 Meander ☐ Property ☐
 Rancho ☐ Other ☐

Date of Survey 8-14-2014**COORDINATES (Optional)**

N. 2121948.270
 E. 6052440.701
 Zone NAD27 ☐ NAD83 ☒
 NAD83 Epoch 2014.250
 Elev. 8.76
 Vert. Datum: NGVD29 ☐ NAVD88 ☒
 Meas. Units: Metric ☐ Imperial ☒

Corner - Left as found ☒ Found and tagged ☐ Established ☐ Reestablished ☐ Rebuilt ☐

Identification and type of corner found: Evidence used to identify or procedure used to establish or reestablish the corner:

The City of Oakland, brass cap monument stamped 10/C-R/9 is located at the intersection of 21st. Street and Lakeside Drive as shown on the City of Oakland Monument Index Sheet number 222. Data is on file in the City Land Surveyor's Office, City of Oakland, California.

In compliance with Section 8771 Professional Land Surveyor's Act, this cornerrecord is being filed PRIOR to street improvement project.

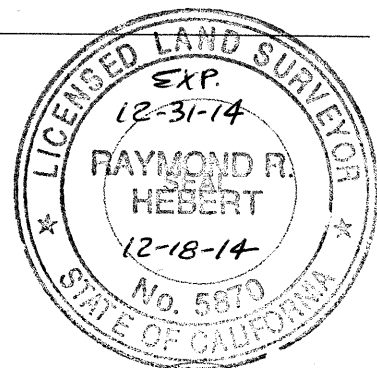
A description of the physical condition of the monument as found and as set or reset:

The monument is in good condition.

SURVEYOR'S STATEMENT

This Corner Record was prepared by me or under my direction in conformance with the Professional Land Surveyor's Act on 12-18-2014

Signed

P.L.S or R.C.E. No. 5870**COUNTY SURVEYOR'S STATEMENT**

This Corner Record was received

8-8-14

and examined and filed

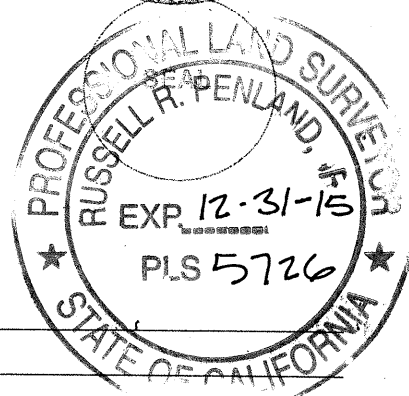
1-6-15

Signed

P.L.S or R.C.E. No. 5726

Title

County Surveyor's Comment:

GN76C1

LEGEND

- FOUND STANDARD STREET MONUMENT
- x FOUND CUT CROSS
- ⌘ SET PK OR MAG NAIL OR AS NOTED
- AA##A# COUNTY DESIGNATION



SCALE 1"=40'

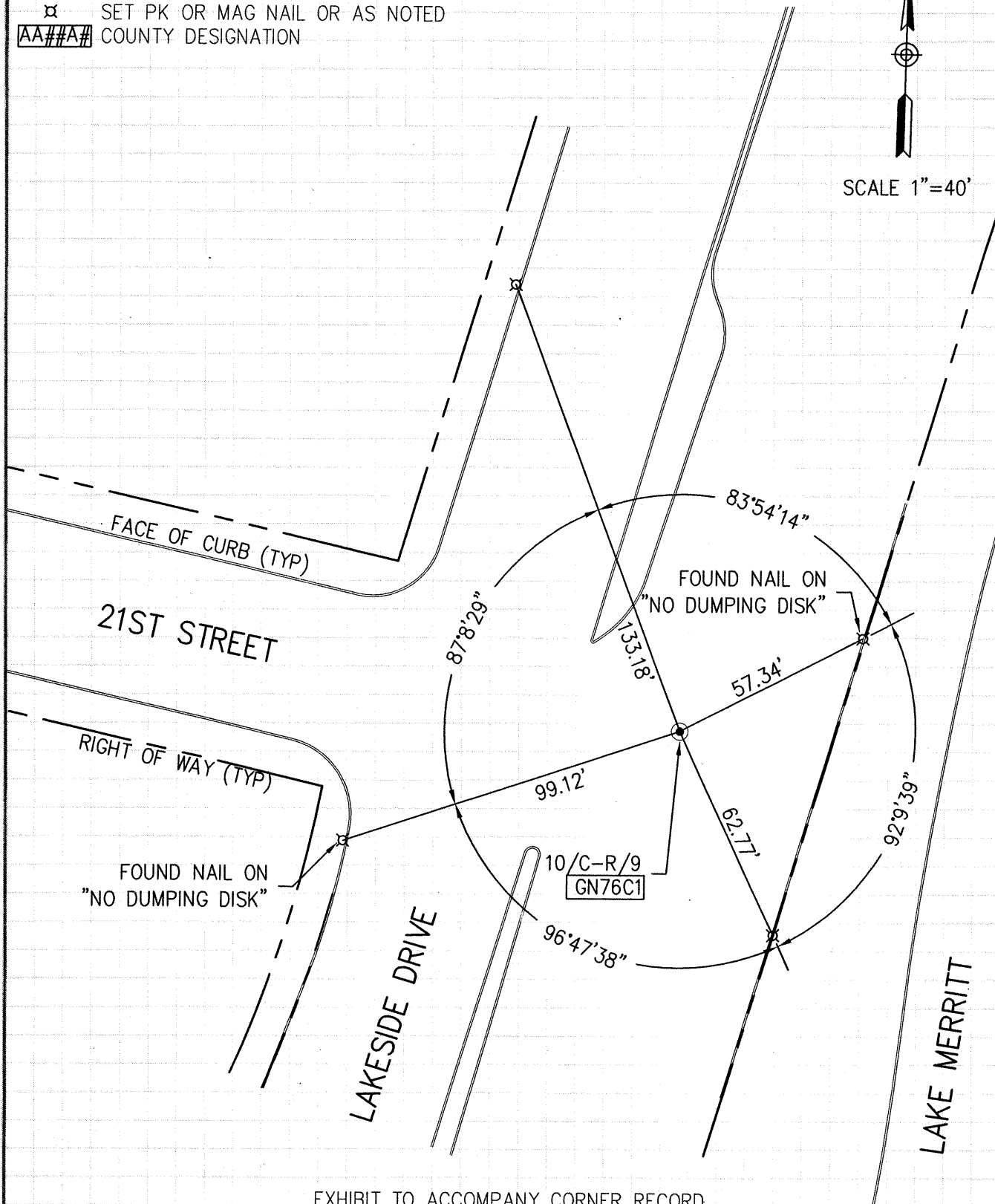


EXHIBIT TO ACCOMPANY CORNER RECORD
BUREAU OF ENGINEERING AND CONSTRUCTION
CITY OF OAKLAND, COUNTY OF ALAMEDA, STATE OF CALIFORNIA