

FINISH SCHEDULE					
ROOM NAME	FLOOR	BASE	WALL	CEILING	03-54-22
(100) DINING ROOM	T200 24" X 24" TILE T402 INLAY	T111 TILE SIZE: REF. SCHEDULE T200 TILE SIZE: REF. SCHEDULE T124 FULL TILE	P101, P104 T111, T124 G-1 WALL COVERING	C1 C3 2' X 2' ARMSTRONG, OPTIMA GYP BOARD W/ PAINT P103	
(101) SERVING AREA	S1 S2 PLAIN ABRASIVE IN HIGH TRAFFIC AREAS	S1 6" H. CONT. (KITCHEN EQUIPMENT ON 6" NSF APPROVED LEGS)	T111 HAND SINK WALL WP1 FRP PANEL	TILE C3 GYP BOARD W/ SMOOTH WASHABLE PAINT	
(102) DRIVE-THRU STATION	S1 S2 PLAIN ABRASIVE IN HIGH TRAFFIC AREAS	S1 6" H. CONT. (KITCHEN EQUIPMENT ON 6" NSF APPROVED LEGS)	WP1 FRP PANEL	C2 2' X 4' SUSPENDED GRID WASHABLE VINYL-COATED GYP BOARD PANELS	
(103) KITCHEN	S1 S2 PLAIN ABRASIVE IN HIGH TRAFFIC AREAS	S1 6" H. CONT. (KITCHEN EQUIPMENT ON 6" NSF APPROVED LEGS)	WP3 S.S. HAND COOK LINE WP1 FRP PANEL	C2 2' X 4' SUSPENDED GRID WASHABLE VINYL-COATED GYP BOARD PANELS	
(104) KITCHEN PREP.	S1 S2 PLAIN ABRASIVE IN HIGH TRAFFIC AREAS	S1 6" H. CONT. (KITCHEN EQUIPMENT ON 6" NSF APPROVED LEGS)	WP1 FRP PANEL	C2 2' X 4' SUSPENDED GRID WASHABLE VINYL COATED GYP BOARD PANELS	
(105) WALK-IN COOLER	S1 S2 PLAIN ABRASIVE IN HIGH TRAFFIC AREAS	S.S. / ALUMINUM WITH 3/8" RADIUS	EXT S.S. INT ALUMINUM GALVANIZED S.S.	ALUMINUM GALVANIZED STAINLESS STEEL	
(105A) WALK-IN FREEZER	GALVANIZED STAINLESS STEEL S1 SILIKAL UNDER WIF SUBFLOOR	S.S. / ALUMINUM WITH 3/8" RADIUS	EXT S.S. INT ALUMINUM GALVANIZED S.S.	ALUMINUM GALVANIZED STAINLESS STEEL	
(106) MEN'S ROOM	T200 24" X 24" TILE	T108 FULL TILE SCHLUTER	T108 TILE	C3 GYP BOARD W/ P101 SMOOTH WASHABLE PAINT	
(107) WOMEN'S ROOM	T200 24" X 24" TILE	T108 FULL TILE SCHLUTER	T108 TILE	C3 GYP BOARD W/ P101 SMOOTH WASHABLE PAINT	
(108) VESTIBULE	T200 24" X 24" TILE	T124 FULL TILE	P104 T124 FULL TILE	C3 GYP BOARD W/ P101 SMOOTH WASHABLE PAINT	
(109) NOT USED	-	-	-	-	
(110) EXTERIOR STORAGE	SEALED CONCRETE, SMOOTH FINISH	-	WP1 FRP PANEL	C3 GYP BOARD W/ P101 SMOOTH WASHABLE PAINT	
(111) NOT USED	-	-	-	-	

DOOR & HARDWARE SCHEDULE

INSTALLED AND FURNISHED BY G.C. UNLESS NOTED OTHERWISE

CONTRACTOR TO PURCHASE DOOR HARDWARE & FRAME DIRECTLY FROM PANDA'S NATIONAL ACCOUNT SUPPLIER. SUPPLIER TO PROVIDE ALL STOREFRONT DOOR HARDWARE, P-LAM DOORS & FRAMES AND HM DOORS & FRAMES

CONTACT FOR QUOTING, ORDERING & LOGISTICS
APRIL WALDREN, PROJECT MANAGER
800-887-4307 EXT. 350 PHONE
AprilW@locknet.com, panda@locknet.com

CONTACT FOR GENERAL ACCOUNT NEEDS
ANGIE HAINES, ACCOUNT MANAGER
800-887-4307 EXT. 145 PHONE / 859-509-4031 MOBILE
AngieH@locknet.com, panda@locknet.com

NOTES:
CONTRACTOR HAS THE OPTION TO PURCHASE STOREFRONT HARDWARE FROM OTHER SOURCE, PROVIDED THE HARDWARE IS PER SPEC. NO SUBSTITUTIONS ALLOWED. STOREFRONT HARDWARE SPECS ARE PROVIDED IN THE PROJECT BID PACKAGE. COORDINATE WITH PANDA PROJECT MANAGER LISTED ON SHEET G-001.

ADDITIONAL CONTACTS:
THOMAS DOWNS, SALES MANAGER, ThomasD@locknet.com; 800-887-4307 X116
EDDIE ANDUEZA, DIR. ARCH. DOOR & HRDWR SOL., eddiea@locknet.com; 859-432-2289

NO.	DOOR MATERIAL	SIZE	FRAME	FACED/EGE	THK.	CORE	LITE	RATE	PASSAGE	LOCKSET	ENTRY KEYPAD	SELECT STRIKE	W/ ENTRY KEYPAD	PRIVACY	SE PULL	SE PUSH	PANIC	BUTT	CONT. PANIC	FLOOR	WALL	THRESHOLD	LATCH GUARD	DEFEX ALUMI	SILENERS	NOCKPLATE	CLOSER	REMARKS
(21)	ALUMINUM STOREFRONT KARNHEER CURTAIN WALL SYSTEM	2) 3'-6" X 7'-0"	ALUM.	BLACK ALUM.	1 3/4"	HOLLOW	GLASS	-	●	●	●	●	●	●	●	●	●	●	●	●	●	●	●	●	●	●	●	KARNHEER CURTAIN 1620 SYSTEM PULL ON EXTERIOR SIDE
(22)	ALUMINUM STOREFRONT KARNHEER CURTAIN WALL SYSTEM	3'-6" X 7'-0"	ALUM.	BLACK ALUM.	1 3/4"	HOLLOW	GLASS	-	●	●	●	●	●	●	●	●	●	●	●	●	●	●	●	●	●	●	●	KARNHEER CURTAIN 1620 SYSTEM PULL ON EXTERIOR SIDE
(23)	S.C. WOOD	3'-0" X 7'-0"	H. MTL.	PLASTIC LAM. PRE-FINISHED	1 3/4"	SOLID	-	-	●	●	●	●	●	●	●	●	●	●	●	●	●	●	●	●	●	●	●	KICKPLATE ON EA. SIDE OF DOOR
(24)	NOT USED	-	-	-	-	-	-	-	●	●	●	●	●	●	●	●	●	●	●	●	●	●	●	●	●	●	●	KICKPLATE ON INT. SIDE OF DOOR
(25)	HOLLOW METAL	3'-6" X 7'-0"	H. MTL.	PAINTED	1 3/4"	INSUL.	-	-	●	●	●	●	●	●	●	●	●	●	●	●	●	●	●	●	●	●	●	WI LOUVERED VENT & BUG SCREEN
(26)	HOLLOW METAL	3) 3'-0" X 7'-0"	H. MTL.	PAINTED	1 3/4"	INSUL.	-	-	●	●	●	●	●	●	●	●	●	●	●	●	●	●	●	●	●	●	●	WI LOUVERED VENT & BUG SCREEN
(28)	ALUMINUM STOREFRONT	3'-6" X 7'-0"	ALUM.	BLACK ALUM.	1 3/4"	HOLLOW	GLASS	-	●	●	●	●	●	●	●	●	●	●	●	●	●	●	●	●	●	●	●	OPAQUE BLACK-OUT SPANDREL GLAZING
(116)	NOT USED	-	-	-	-	-	-	-	●	●	●	●	●	●	●	●	●	●	●	●	●	●	●	●	●	●	●	1

WALL SCHEDULE

INSTALLED AND FURNISHED BY G.C. UNLESS NOTED OTHERWISE

NO.	DESCRIPTION
(1)	3'-6" 20GA. METAL STUD WALL W/ 1/2" TYPE "X" GYP. BOARD BOTH SIDES (SEE ARCHITECTURAL DETAILS & ELEVATIONS)
(2)	3'-6" 20GA. METAL STUD WALL W/ 1/2" TYPE "X" GYP. BOARD ON ONE SIDE (SEE ARCHITECTURAL DETAILS & ELEVATIONS)
(3)	(2) 3'-6" 20GA. METAL STUD WALLS W/ 1/2" TYPE "X" GYP. BOARD BOTH SIDES (SEE ARCHITECTURAL DETAILS & ELEVATIONS)
(4)	3'-6" 20GA. METAL STUD LOW WALL W/ 1/2" TYPE "X" GYP. BD BOTH SIDES. PROVIDE 3" KNEE-WALL BRACE/POST @ CORNERS AND @ 48" O.C.
(5)	6" 20GA. METAL STUD WALL W/ 1/2" TYPE "X" GYP. BOARD BOTH SIDES (SEE ARCHITECTURAL DETAILS & ELEVATIONS)
(6)	6" 20GA. METAL STUD WALL W/ 1/2" TYPE "X" GYP. BOARD ONE SIDE (SEE ARCHITECTURAL DETAILS & ELEVATIONS)
(7)	3'-6" 20GA. METAL STUD LOW WALL W/ 1/2" TYPE "X" GYP. BOARD BOTH SIDES. PROVIDE 3" KNEE-WALL BRACE/POST @ CORNERS AND @ 48" O.C.
(8)	1 1/2" 20GA. HAT CHANNEL FURRING W/ 1/2" TYPE "X" GYP. BOARD ON ONE SIDE. REFER DETAILS FOR FURRING DISTANCE
(9)	2 1/2" 20GA. METAL STUD FURRING W/ 1/2" TYPE "X" GYP. BOARD ON ONE SIDE

WALL PANEL SCHEDULE

INSTALLED AND FURNISHED BY G.C. UNLESS NOTED OTHERWISE

NO.	MANUFACTURER	DESCRIPTION	MFG #	COLOR FINISH	REMARK
(WP1)	CRANE COMPOSITES INC.	F.R.P. THICKNESS: .075	LBCS.14	#636 (GRAY), SM/SM	CONTACT: LAUREN ARMSTRONG 815.467.8884
(WP2)	-	S.S. PANEL (22 GA)	-	BRUSHED FINISH	FURNISHED BY PX, INSTALLED BY G.C.
(WP3)	-	S.S. PANEL (22 GA)	-	DIAMOND PATTERN FINISH	FURNISHED BY PX, INSTALLED BY G.C.
(W101)	NOT USED	-	-	-	-
(W103)	NOT USED	-	-	-	-
(W104)	NOT USED	-	-	-	-
(W106)	WOLF GORDON	WALLCOVERING	-	GOLD LANTERN & CLOUD	CONTACT: CINDY GALLAGHER 718.391.5478 cindy.gallagher@wolfgordon.com
(W107)	WOLF GORDON	WALLCOVERING	-	FRETWORK	
(W108)	-	CANOPY GRAPHIC	-	-	
(E-40)	-	MENU BACKER PANEL	TBD	TBD	
(E-101)	-	WALL MURAL	TBD	TBD	

SPECIAL SURFACE SCHEDULE

INSTALLED AND FURNISHED BY G.C. UNLESS NOTED OTHERWISE

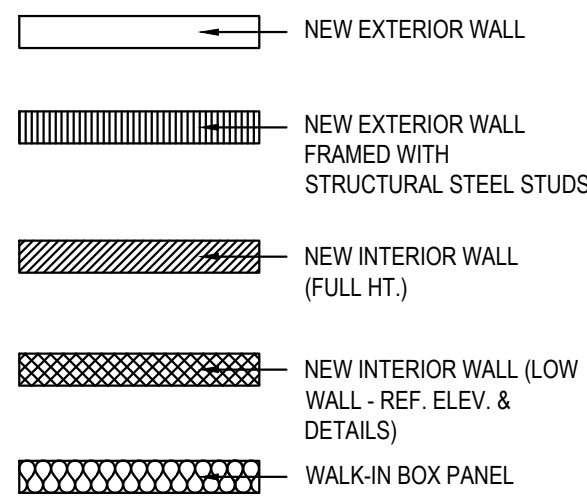
NO.	MANUFACTURER	PRODUCT	MFG #	STAIN / COLOR	FINISH	REMARK
(QZ-3)	DALTILE	ARTIFICIAL QUARTZ	-	BROADWAY BLACK	POLISHED	SERVICE COUNTER & DRINK STATION PROVIDED BY PX, INSTALLED BY G.C.

INTERIOR PAINT SCHEDULE

INSTALLED AND FURNISHED BY G.C. UNLESS NOTED OTHERWISE

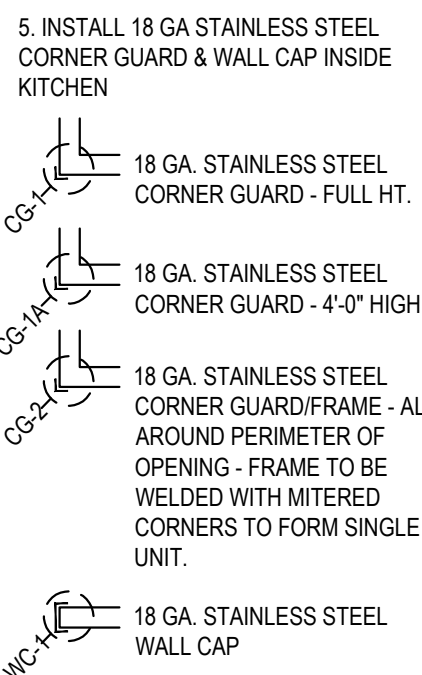
NO.	MANUFACTURER	MFG #	COLOR	FINISH	REMARK
(P9A5)	SHERWIN-WILLIAMS	SW 7065	ARGOS	PROMAR 200, ZERO VOC, LATEX SEMI-GLOSS	REAR SERVICE DOOR
(P101)	SHERWIN-WILLIAMS	SW 6252	ICE CUBE	PROMAR 200, ZERO VOC, LATEX EGG-SHELL	RESTROOM & RESTROOM VESTIBULE CEILING, DINING ROOM SOFFIT
(P102)	NOT USED	-	-	-	-
(P103)	NOT USED	-	-	-	-
(P104)	SHERWIN-WILLIAMS	SW 2850	CHELSEA GRAY	PROMAR 200, ZERO VOC, LATEX EGG-SHELL	DINING RM. WALLS, RESTROOM VESTIBULE WALLS
(P105)	NOT USED	-	-	-	-
(P106)	SHERWIN-WILLIAMS	SW 7069	IRON ORE	DTM ACRYLIC GLOSS, LOW VOC	RESTROOM DOOR FRAMES
(P205)	SHERWIN-WILLIAMS	SW 7069	IRON ORE	PROMAR 200, ZERO VOC, LATEX EGG-SHELL	FRONT & UNDERSIDE OF SERVICE LINE & BACK OF SERVICE LINE SOFFIT

WALL LEGEND



NOTE: THE FOLLOWING STAINLESS STEEL PROVIDED BY PX-INSTALLED BY G.C.
1. PANEL DIVIDERS AT WP3
2. INSIDE CORNER AT WP3 TO WP2
3. FLASHING AT TOP OF BASE WP3
4. WP2 PIECE AT LENGTH OF WALL

NOTE: THE FOLLOWING STAINLESS STEEL PROVIDED BY G.C.-INSTALLED BY G.C.
5. INSTALL 18 GA. STAINLESS STEEL CORNER GUARD & WALL CAP INSIDE KITCHEN



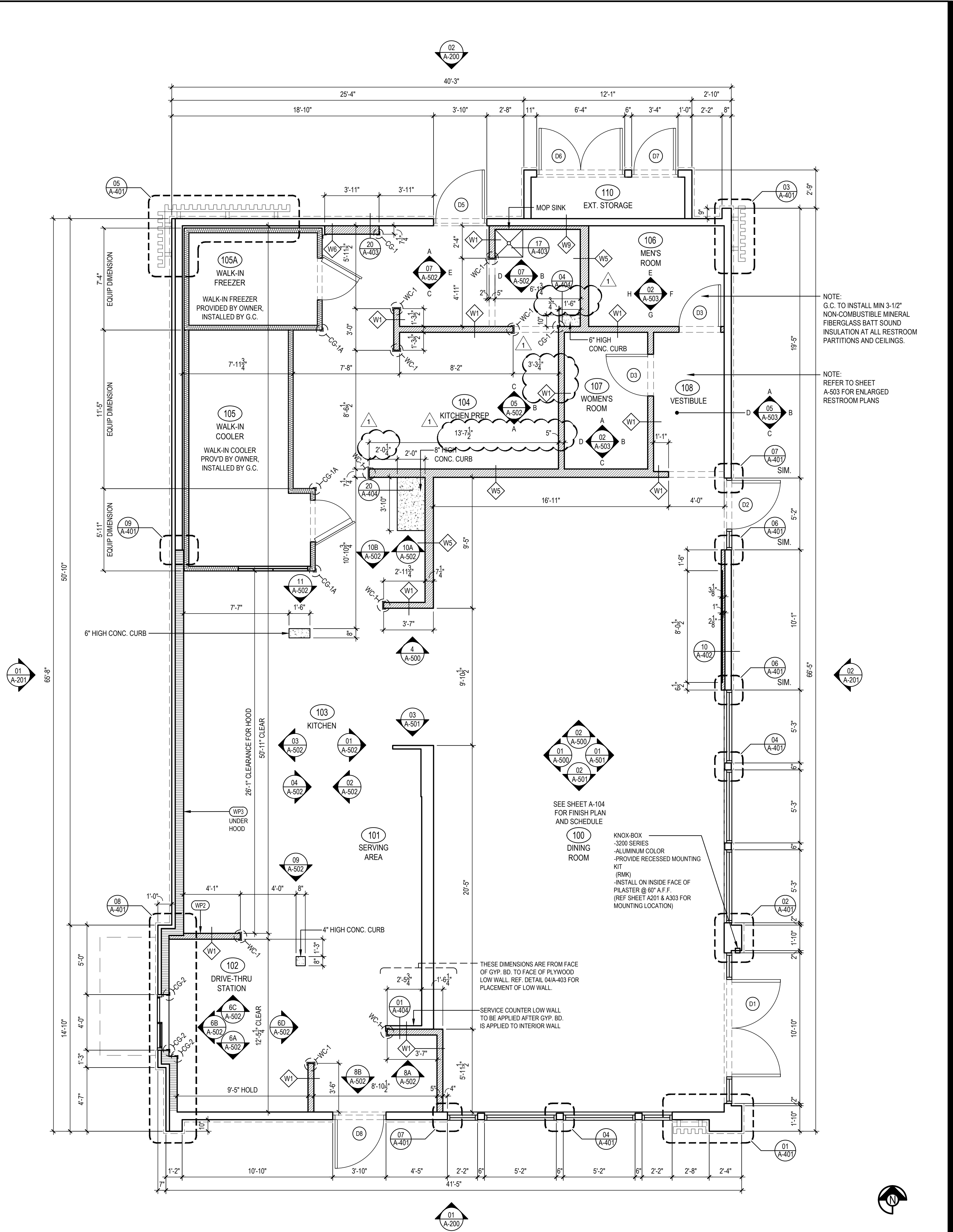
ALL OTHER STAINLESS STEEL BY G.C.

NOTE!!!!!!!!!!!!!!:

***ALL INTERIOR DIMENSIONS ARE TO FACE OF GYPSUM BOARD**

NOTE:

CONTRACTOR TO NOTIFY 3rd PARTY VENDOR, PER THE VENDOR LIST, FOR WALL PRE-TREAT BEFORE CLOSING WALLS



FLOOR PLAN 1
Scale= 1/4" = 1'-0"

A-103



PANDA EXPRESS, INC.
1683 Walnut Grove Ave.
Rosemead, California
91770

Telephone: 626.799.9898
Facsimile: 626.372.8288

All ideas, designs, arrangement and plans indicated or represented by this drawing are the property of Panda Express Inc. and were created for use on this specific project. None of these ideas, designs, arrangements or plans may be used by or disclosed to any person, firm, or corporation without the written permission of Panda Express Inc.

REVISIONS:

OWNER REVISIONS 01-30-23

ISSUE DATE:

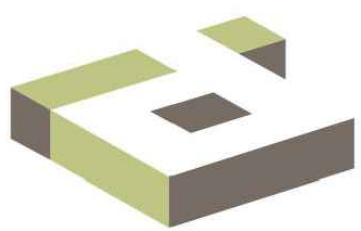
ISSUE FOR PERMIT 10-20-22
ISSUE FOR BID 01-30-23

DRAWN BY: AE/SS

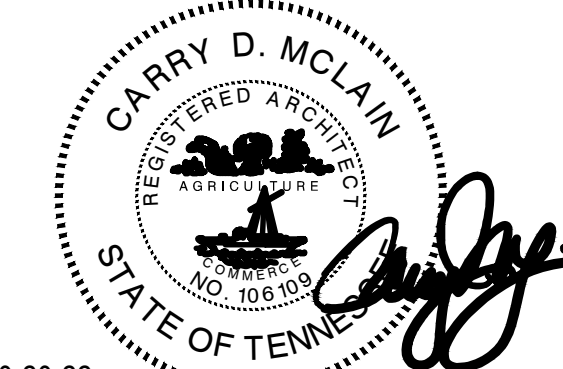
PANDA PROJECT #: D23503

PANDA STORE #: -

ARCH PROJECT #: 261-443



idGROUP



10-20-22

PANDA EXPRESS

PANDA HOME 2600
NORTH RIVERSIDE DR & 2ND ST.
CLARKSVILLE, TN 37040

A-103

FLOOR PLAN

PANDA HOME 2600 R4

ISSUE FOR BID 01-30-2023

ISSUE FOR BID 01-30-2023