

REFERENCE

see sheet 1

PM	31-10
RS	1-2
RS	1-127
RS	2-135
RS	3-60
RS	6-134
RS	7-106
RS	8-52
SD	F-102

FOUND EVIDENCE OF LOCATION OF 1/4 CORNER IN EXISTING FENCE LINE; SET 1 1/2" C.I.P. STAMPED.

SET 1 1/2" C.I.P. STAMPED.

FOR INTERSECTION OF
DETAILED
REAR-SECTION FENCE
WITH DETAIL B
SEE DETAIL B
SEE COR.

T. 9 N., R. 8 E., M.D.M.

COUNTY OF EL DORADO, CALIFORNIA

SCALE: 1"=500' * JANUARY 1983

GENE E. THORNE & ASSOCIATE, RCE 20462

SHEET 2 OF 3

RECORD OF SURVEY

PORTIONS OF SECTIONS 11, 14, 15, 23, 24, & 25

15 14
22 23

14 23
23 24

23 24

23 24

23 24

23 24

23 24

23 24

23 24

23 24

23 24

23 24

23 24

23 24

23 24

23 24

23 24

23 24

23 24

FOUND 2 1/2" IRON
PIPE FENCE CORNER

SET 1 1/2" C.I.P.
STAMPED.

TIE TO INTERSECTION
OF NORTH-SOUTH
FENCE LINE AND
EAST-WEST FENCE
LINE: N 11° 46' 02" E
8.54'

FOUND 1 1/2" C.I.P.
STAMPED FOR
1/4 CORNER AND
1/4 CORNER

FOUND 1 1/2" C.I.P.
STAMPED FOR
1/4 CORNER AND
1/4 CORNER

FOUND 1 1/2" C.I.P.
STAMPED FOR
1/4 CORNER AND
1/4 CORNER

FOUND 1 1/2" C.I.P.
STAMPED FOR
1/4 CORNER AND
1/4 CORNER

FOUND 1 1/2" C.I.P.
STAMPED FOR
1/4 CORNER AND
1/4 CORNER

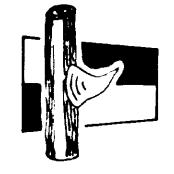
FOUND 1 1/2" C.I.P.
STAMPED FOR
1/4 CORNER AND
1/4 CORNER

BASIS OF BEARINGS

THE MERIDIAN OF THIS SURVEY IS BASED UPON FOUND MONUMENTS AND IS IDENTICAL TO THAT OF RS B-52 AND IS GRID NORTH. ALL DISTANCES ARE GROUND DISTANCES.

NOTES

- ALL DISTANCES SHOWN ON CURVED LINES ARE CHORD MEASUREMENTS.
- SURVEYED FOR EL DORADO TULS BUSINESS PARK, BY GENE E. THORNE RCE 20462. FOR CERTIFICATES SEE RECORD OF SURVEY BOOK 12 PAGE 97.



LEGEND

- FOUND MONUMENT AS DESCRIBED HEREON.
- ⊕ FOUND 3/4" C.I.P. STAMPED "RW 1965, P18".
- ⊙ SET 1 1/2" C.I.P. STAMPED AS SHOWN.
- SET 3/4" C.I.P. STAMPED "RCE 20462-1983".

FOUND EVIDENCE OF LOCATION OF 1/4 CORNER IN EXISTING FENCE LINE; SET 1 1/2" C.I.P. STAMPED.

TIE TO CORNER OF
NORTHERLY FENCE
LINE AND EASTER-
LY FENCE LINE:
N 12° 28' 23" W 25.07'

SET 1 1/2" C.I.P.
STAMPED.

ACCEPTED THE INTER-
SECTION OF EAST-
WEST AND NORTH-
SOUTH FENCE LINES
AS THE LOCATION OF THE 1/4
CORNER AND SET 1 1/2"
C.I.P. STAMPED.

FOUND 1 1/2" C.I.P.
STAMPED FOR
SECTION CORNER,
LS 3923-1980

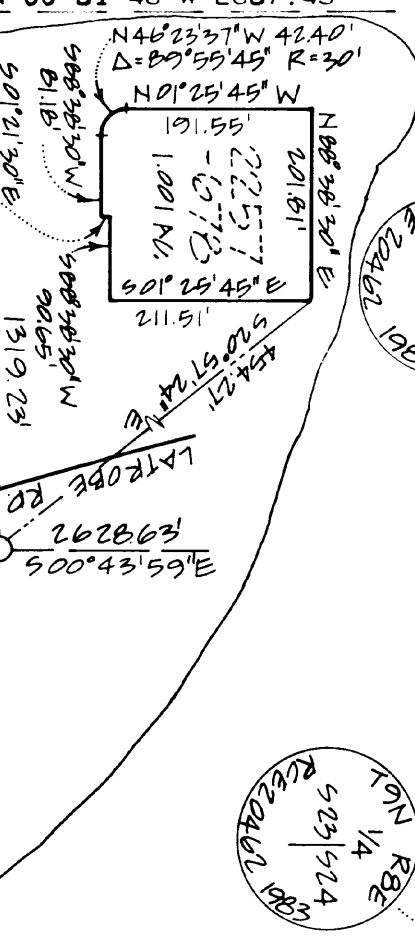
FOUND 1 1/2" C.I.P.
STAMPED FOR
SECTION CORNER,
LS 3923-1980

FOUND 1 1/2" C.I.P.
STAMPED FOR
SECTION CORNER,
LS 3923-1980

FOUND 1 1/2" C.I.P.
STAMPED FOR
SECTION CORNER,
LS 3923-1980

FOUND 1 1/2" C.I.P.
STAMPED FOR
SECTION CORNER,
LS 3923-1980

FOUND 1 1/2" C.I.P.
STAMPED FOR
SECTION CORNER,
LS 3923-1980



NO EVIDENCE OF
ORIGINAL CORNER FOUND
LOCATION OF 1/4 CORNER
BY SINGLE PROPORTION,
NOTHING FOUND OR SET
COMPUTATION POINT ONLY.

FOUND 1 1/2" C.I.P. STAMPED
"RE 46" AT THE INTERSECTION
OF NORTH-SOUTH AND EAST
FENCE LINE; ACCEPTED FOR
SECTION CORNER AND STAMPED
APPROPRIATELY AND "RCE 20462-1983"

FOUND EVIDENCE OF
LOCATION OF 1/4 CORNER
IN EXISTING FENCE
LINE; SET 1 1/2" C.I.P. STAMPED.

FOUND 1 1/2" C.I.P.
WITH BRASS CAP
STAMPED:

FOUND 1 1/2" C.I.P.
WITH BRASS CAP
STAMPED:

22 23
27 26

26 23
23 24

26 23

26 23

26 23

26 23

26 23

26 23

26 23

26 23

26 23

26 23

26 23

26 23

26 23

26 23

26 23

26 23

26 23

26 23

26 23

ESTABLISHED LOCATION OF
SECTION CORNER AT INTERSECTION
OF NORTH-SOUTH FENCE LINE
PROJECTION WITH EAST-WEST
FENCE LINE; SET 1 1/2" C.I.P.
STAMPED.

ESTABLISHED LOCATION OF
SECTION CORNER AT INTERSECTION
OF NORTH-SOUTH FENCE LINE
PROJECTION WITH EAST-WEST
FENCE LINE; SET 1 1/2" C.I.P.
STAMPED.

ESTABLISHED LOCATION OF
SECTION CORNER AT INTERSECTION
OF NORTH-SOUTH FENCE LINE
PROJECTION WITH EAST-WEST
FENCE LINE; SET 1 1/2" C.I.P.
STAMPED.

ESTABLISHED LOCATION OF
SECTION CORNER AT INTERSECTION
OF NORTH-SOUTH FENCE LINE
PROJECTION WITH EAST-WEST
FENCE LINE; SET 1 1/2" C.I.P.
STAMPED.

ESTABLISHED LOCATION OF
SECTION CORNER AT INTERSECTION
OF NORTH-SOUTH FENCE LINE
PROJECTION WITH EAST-WEST
FENCE LINE; SET 1 1/2" C.I.P.
STAMPED.

ESTABLISHED LOCATION OF
SECTION CORNER AT INTERSECTION
OF NORTH-SOUTH FENCE LINE
PROJECTION WITH EAST-WEST
FENCE LINE; SET 1 1/2" C.I.P.
STAMPED.

12-97A

12-97A

12-97A

12-97A

12-97A