

General Information

Location: Salinas Ecu
IATA Code: SNC
Lat/Long: S02° 12.3500' W080° 59.0833'
Elevation: 20 ft

Airport Use: Joint
Magnetic Variation: 0.7°W

Fuel Types: 100 Octane (LL), Jet A-1
Customs: No
Airport Type: IFR
Landing Fee: No
Control Tower: Yes
Jet Start Unit: No
LLWS Alert: No
Beacon: Yes

Sunrise: 1116 Z
Sunset: 2322 Z,

Runway Information

Runway: 08
Length x Width: 3500 ft x 131 ft
Surface Type: paved
TDZ-Elev: 16 ft

Runway: 13
Length x Width: 7976 ft x 151 ft
Surface Type: paved
TDZ-Elev: 17 ft
Lighting: Edge
Stopway: 656 ft

Runway: 26
Length x Width: 3500 ft x 131 ft
Surface Type: paved
TDZ-Elev: 14 ft

Runway: 31
Length x Width: 7976 ft x 151 ft
Surface Type: paved
TDZ-Elev: 12 ft
Lighting: Edge, ALS

Communication Information

Salinas Tower 129.7 Secondary
Salinas Tower 118.85
Salinas Ground Control 121.9
Salinas Approach Control 129.1 Secondary
Salinas Approach Control 119.95
Salinas Radio 126.9 Flight Info Service

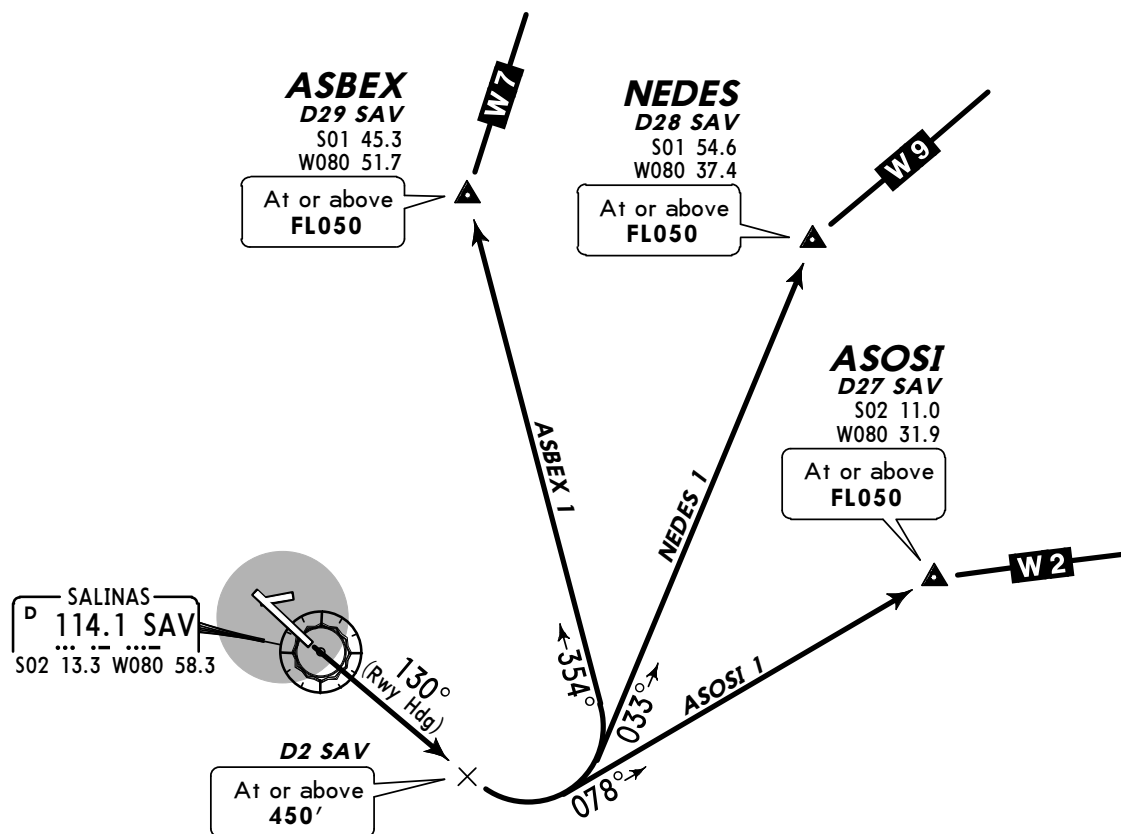
Apt Elev
20'

Trans level: FL030 Trans alt: 3000'

3000'

MSA SAV VOR

**ASBEX 1 [ASBEX1], ASOSI 1 [ASOSI1],
NEDES 1 [NEDES1] DEPARTURES**
(RWY 13)



These SIDs require take-off minimums:
Ceiling 100m, Visibility 1.6 km; and a
minimum climb gradient of 3.3% (201' per NM).

Gnd speed-KT	75	100	150	200	250	300
3.3% V/V (fpm)	251	334	501	668	835	1003

Altitude at distance from SAV:

DME	1	2
ALTITUDE	309	510



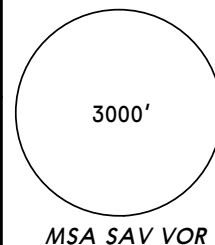
INITIAL CLIMB

After take-off MAINTAIN runway heading 130° to D2 SAV.

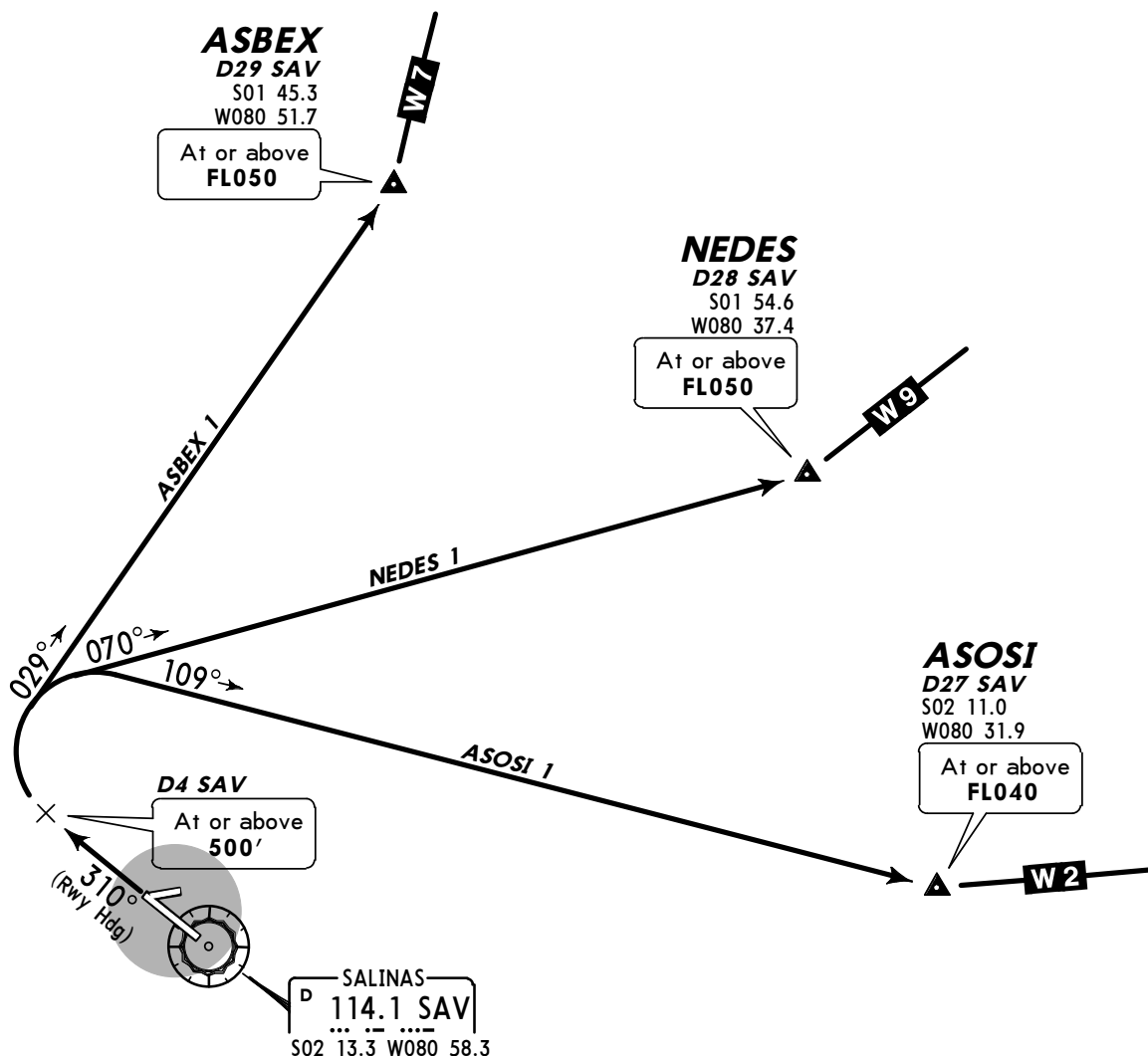
SID	ROUTING
ASBEX 1	At D2 SAV, turn LEFT to follow 354° course to intercept airway W-7 at ASBEX, or proceed according to ATC instructions.
ASOSI 1	At D2 SAV, turn LEFT to follow 078° course to intercept airway W-2 at ASOSI, or proceed according to ATC instructions.
NEDES 1	At D2 SAV, turn LEFT to follow 033° course to intercept airway W-9 at NEDES, or proceed according to ATC instructions.

Apt Elev
20'

Trans level: FL030 Trans alt: 3000'



**ASBEX 1 [ASBEX1], ASOSI 1 [ASOSI1],
NEDES 1 [NEDES1] DEPARTURES**
(RWY 31)



These SIDs require take-off minimums:
Ceiling 100m, Visibility 1.6 km; and a
minimum climb gradient of 3.3% (201' per NM).

Gnd speed-KT	75	100	150	200	250	300
3.3% V/V (fpm)	251	334	501	668	835	1003

Altitude at distance from SAV:

DME	2	3	4
ALTITUDE	90	291	492



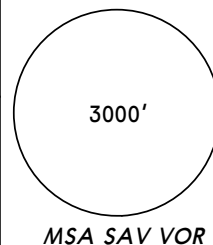
INITIAL CLIMB

After take-off MAINTAIN runway heading 310° to D4 SAV.

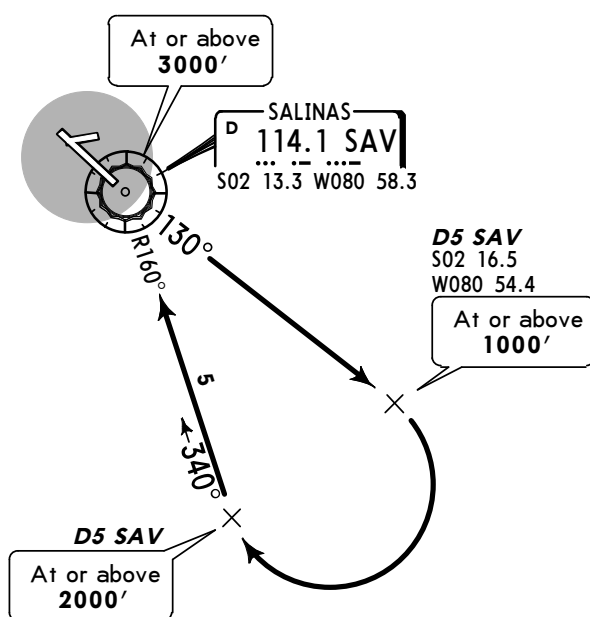
SID	ROUTING
ASBEX 1	At D4 SAV, turn RIGHT to follow 029° course to intercept airway W-7 at ASBEX, or proceed according to ATC instructions.
ASOSI 1	At D4 SAV, turn RIGHT to follow 109° course to intercept airway W-2 at ASOSI, or proceed according to ATC instructions.
NEDES 1	At D4 SAV, turn RIGHT to follow 070° course to intercept airway W-9 at NEDES, or proceed according to ATC instructions.

Apt Elev
20'

Trans level: FL030 Trans alt: 3000'



SAV 1 DEPARTURE [SAV1] (RWY 13)



This SID requires take-off minimums:
Ceiling 100m, Visibility 1.6 km; and a
minimum climb gradient of 3.3% (201' per NM).

Gnd speed-KT	75	100	150	200	250	300
3.3% V/V (fpm)	251	334	501	668	835	1003

INITIAL CLIMB

After take-off MAINTAIN 130° course (SAV R-130) to D5 SAV, turn RIGHT to 340° course (SAV R-160). Continue climb to SAV, or proceed according to ATC instructions.

Apt Elev
20'

Trans level: FL030 Trans alt: 3000'

3000'

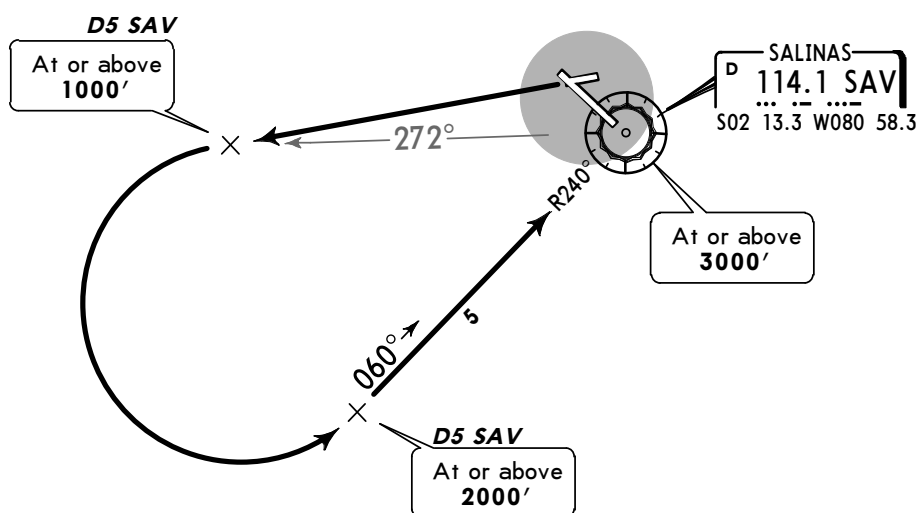
MSA SAV VOR

SAV 1 DEPARTURE

[SAV1]

(RWY 26)

CAT A & B



This SID requires take-off minimums:
Ceiling 100m, Visibility 1.6 km; and a
minimum climb gradient of 3.3% (201' per NM).

Gnd speed-KT	75	100	150	200	250	300
3.3% V/V (fpm)	251	334	501	668	835	1003

Altitude at distance from SAV:

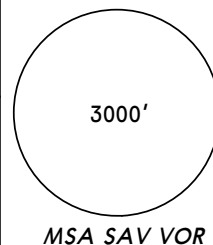
DME	2	3	4	5
ALTITUDE	90	291	492	693

INITIAL CLIMB

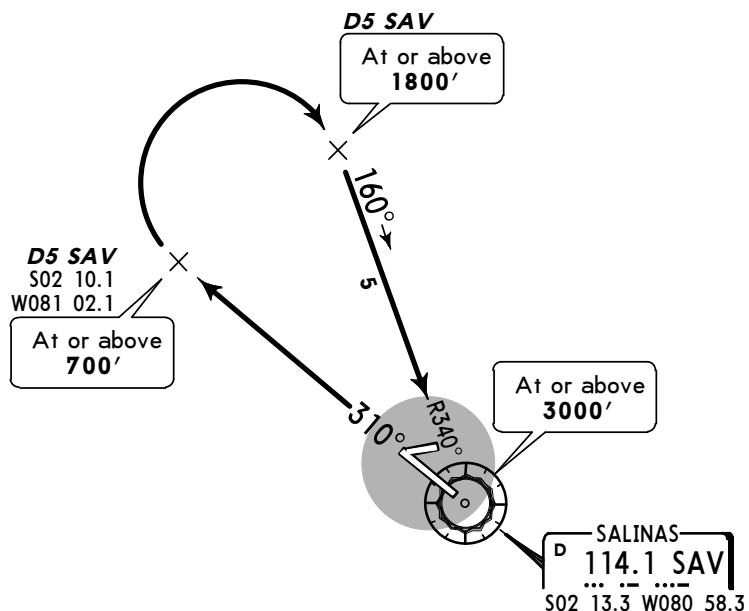
After take-off MAINTAIN runway heading until crossing SAV R-272, turn LEFT to 060° course (SAV R-240). Continue climb to SAV, or proceed according to ATC instructions.

Apt Elev
20'

Trans level: FL030 Trans alt: 3000'



SAV 1 DEPARTURE [SAV1] (RWY 31)



This SID requires take-off minimums:
Ceiling 100m, Visibility 1.6 km; and a
minimum climb gradient of 3.3% (201' per NM).

Gnd speed-KT	75	100	150	200	250	300
3.3% V/V (fpm)	251	334	501	668	835	1003

Altitude at distance from SAV:

DME	2	3	4	5
ALTITUDE	90	303	516	729

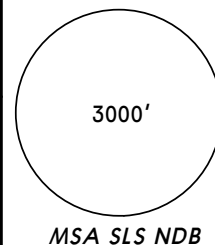


INITIAL CLIMB

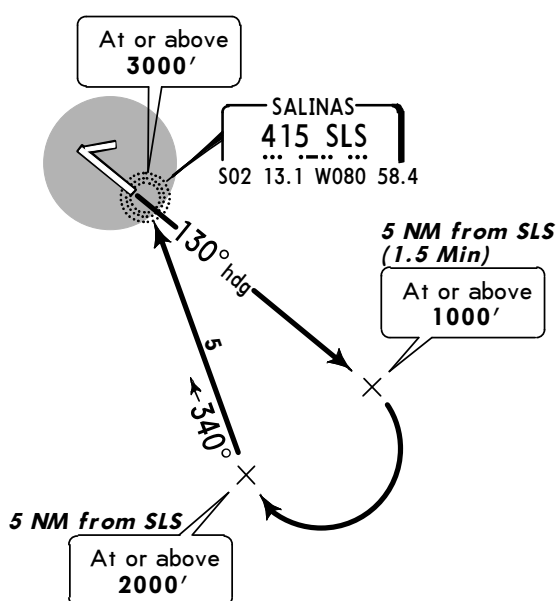
After take-off MAINTAIN 310° course (SAV R-310) to D5 SAV, turn RIGHT to 160° course (SAV R-340). Continue climb to SAV, or proceed according to ATC instructions.

Apt Elev
20'

Trans level: FL030 Trans alt: 3000'



SLS 1 DEPARTURE
[SLS1]
(RWY 13)



NOT TO SCALE

This SID requires take-off minimums of:
Ceiling 100m, Visibility 1.6 km; and a
minimum climb gradient of 3.3% (201' per NM).

Gnd speed-KT	75	100	150	200	250	300
3.3% V/V (fpm)	251	334	501	668	835	1003

Altitude at distance from SAV:

DME	1	2	3	4	5
ALTITUDE	370	471	672	873	1077

INITIAL CLIMB

After take-off MAINTAIN heading 130° to 5 NM from SLS (1.5 Min). Turn RIGHT to 340° course.
Continue climb to SLS, or proceed according to ATC instructions.

Apt Elev
20'

Trans level: FL030 Trans alt: 3000'

3000'

MSA SLS NDB

SLS 1 DEPARTURE

[SLS1]

(RWY 26)

CAT A & B

5 NM from SLS
(1.5 Min)

At or above
1000'

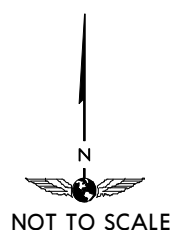
At or above
3000'

SALINAS
415 SLS
S02 13.1 W080 58.4

5 NM from SLS

At or above
2000'

060°

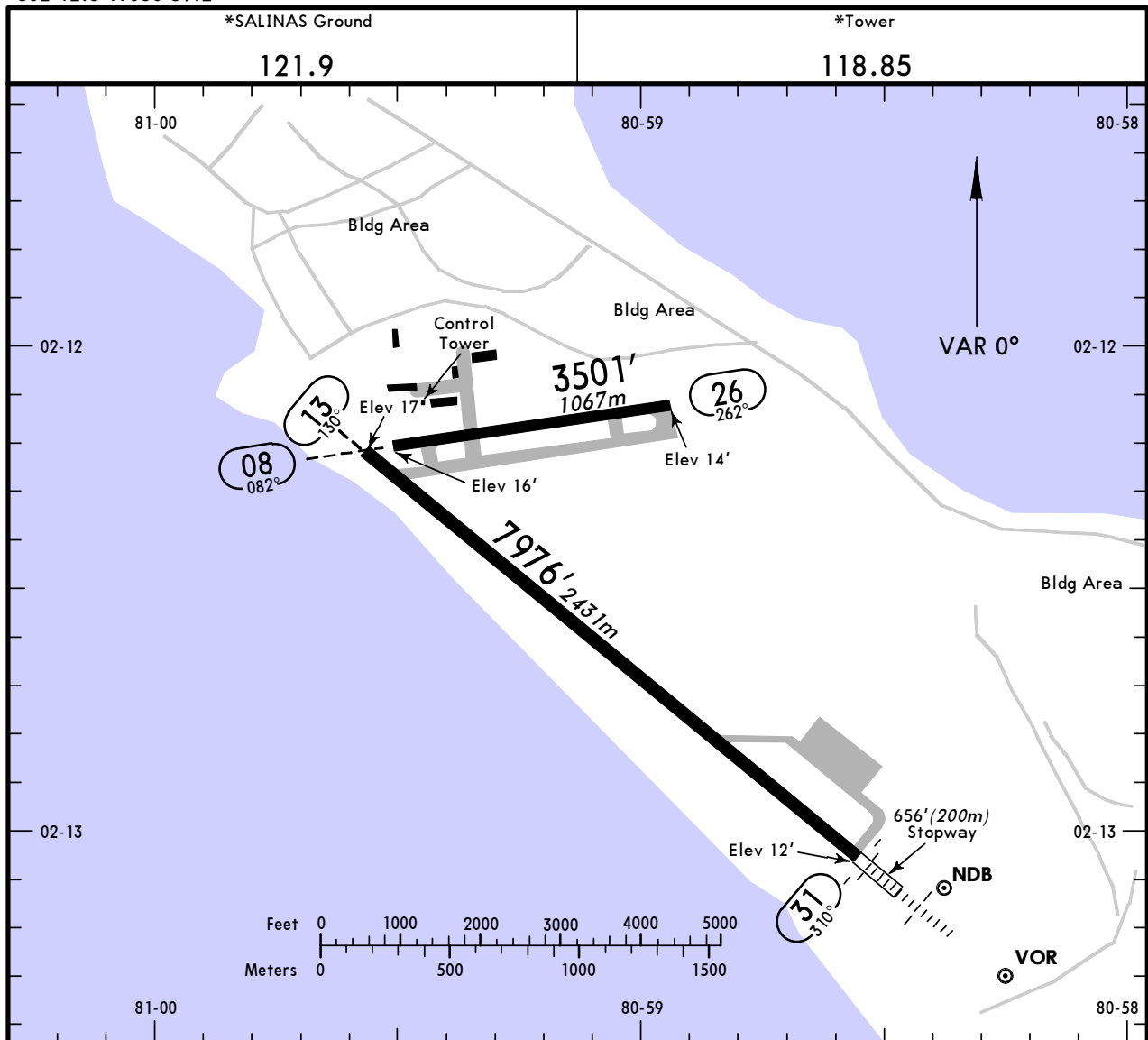


This SID requires take-off minimums of:
Ceiling 100m, Visibility 1.6 km; and a
minimum climb gradient of 3.3% (201' per NM).

Gnd speed-KT	75	100	150	200	250	300
3.3% V/V (fpm)	251	334	501	668	835	1003

INITIAL CLIMB

After take-off MAINTAIN runway heading to 5 NM from SLS (1.5 Min). Turn LEFT to 060° course. Continue climb to SLS, or proceed according to ATC instructions.



ADDITIONAL RUNWAY INFORMATION

RWY		USABLE LENGTHS		TAKE-OFF	WIDTH
		— LANDING	BEYOND		
		Threshold	Glide Slope		
08					131' 40m
26					
13	HIRL				151' 46m
31	HIRL SALS REIL PAPI-L (angle 3.0°)				

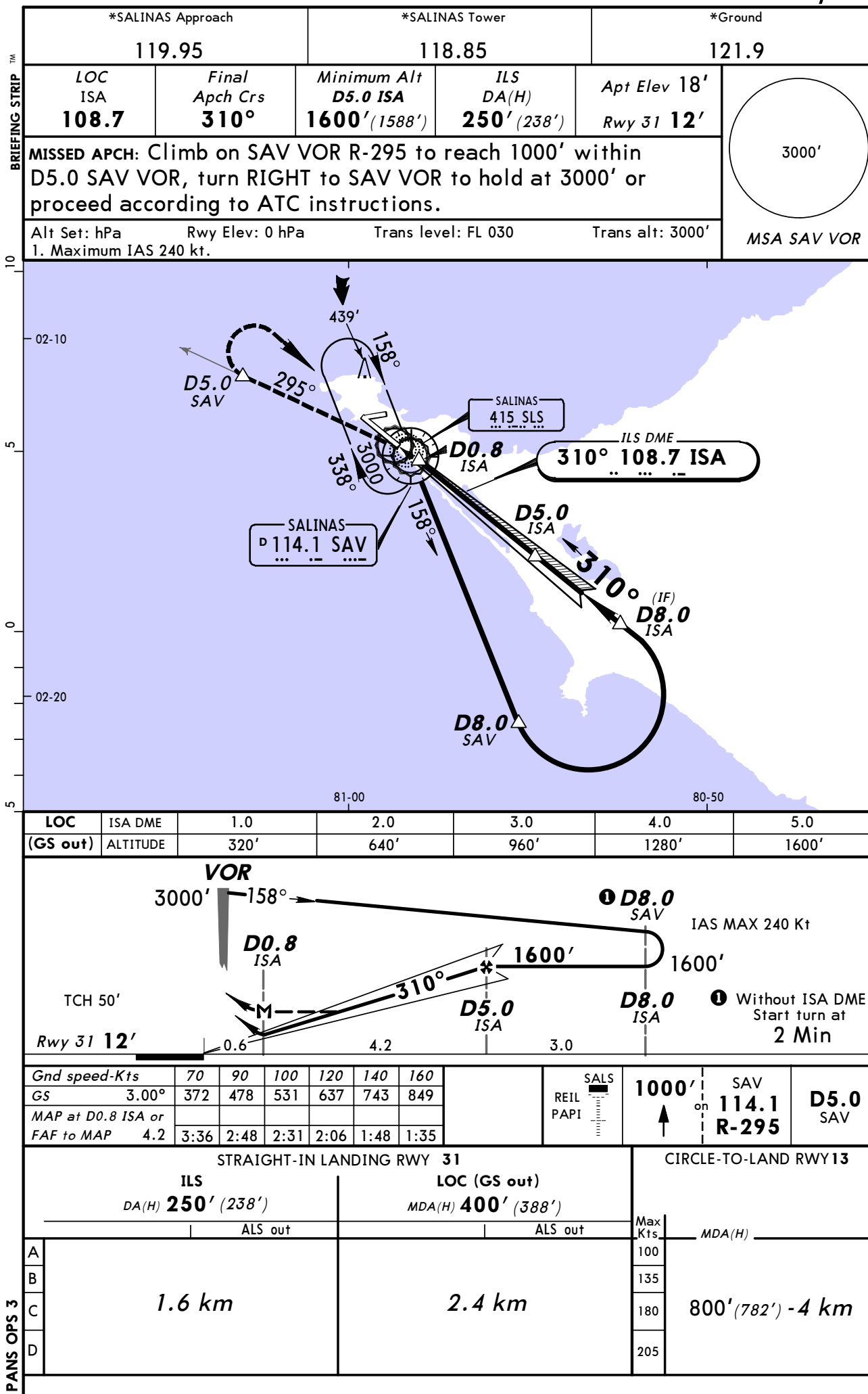
TAKE-OFF

Rwys 13, 26

120m-4.0 km

1 & 2
Eng

3 & 4
Eng



BRIEFING STRIP™

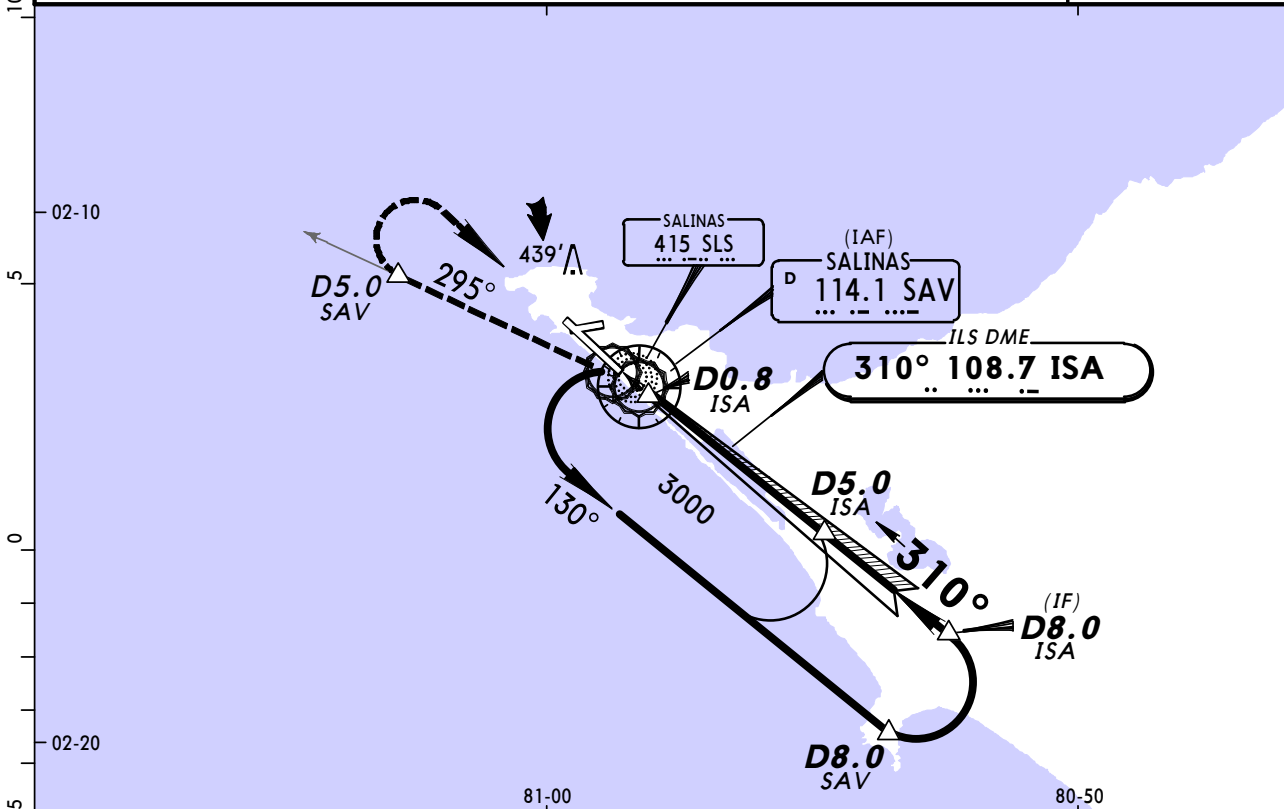


STRAIGHT-IN LANDING RWY 31				CIRCLE-TO-LAND RWY13	
ILS <i>DA(H)</i> 250' (238')		LOC (GS out) <i>MDA(H)</i> 400' (388')		Max Kts.	<i>MDA(H)</i>
ALS out		ALS out			
A	1.6 km		2.4 km		100
B					135
C					180
D					205
800' (782') - 4.0 km					

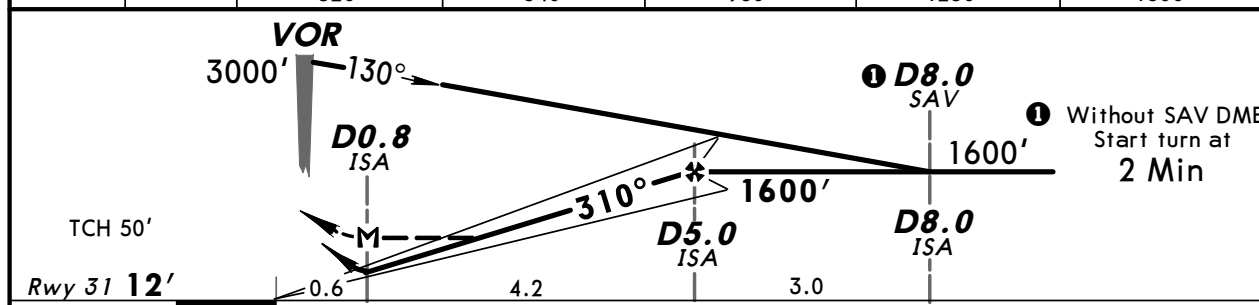
BRIEFING STRIP™

*SALINAS Approach		*SALINAS Tower		*Ground	
119.95		118.85		121.9	
LOC ISA 108.7	Final Apch Crs 310°	Minimum Alt D5.0 ISA 1600' (1588')	ILS DA(H) 250' (238')	Apt Elev 18' Rwy 31 12'	<div>3000'</div> <div>MSA SAV VOR</div>
MISSED APCH: Climb on SAV VOR R-295 to reach 1000' within D5.0 SAV VOR, turn RIGHT to SAV VOR to hold at 3000' or proceed according to ATC instructions.					
Alt Set: hPa Rwy Elev: 0 hPa		Trans level: FL 030		Trans alt: 3000'	
1. Maximum IAS 240 kt.					

0

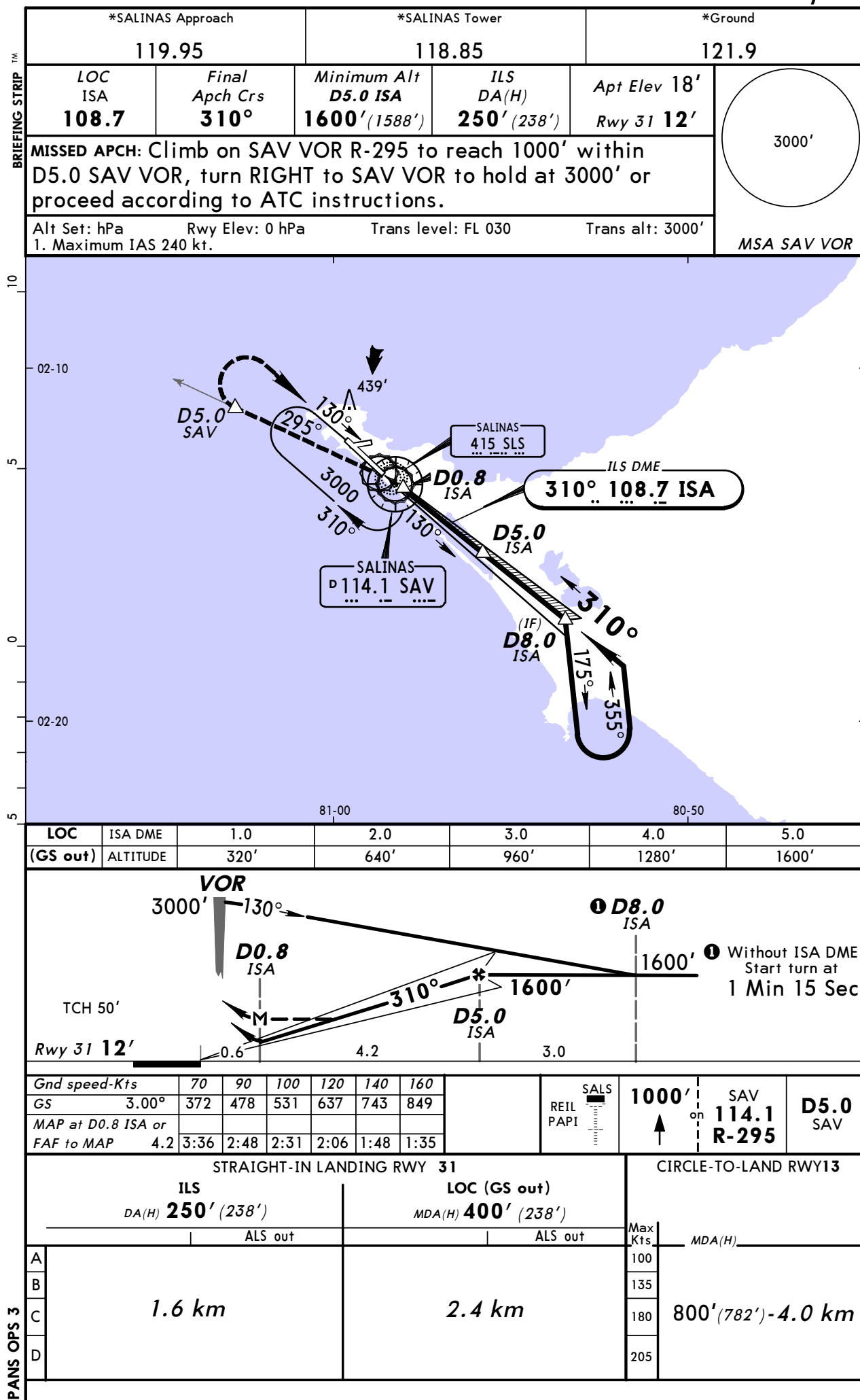


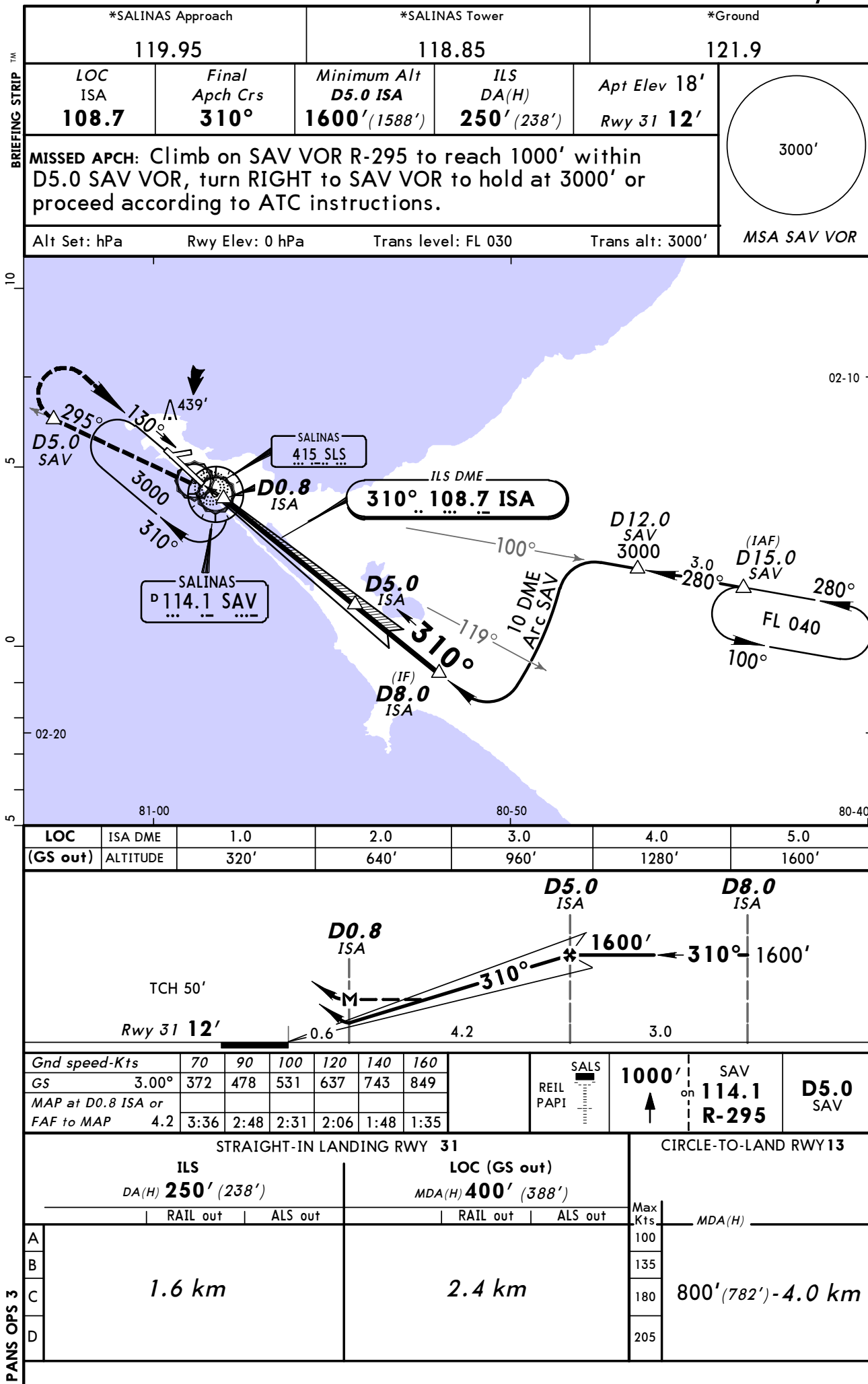
LOC	ISA DME	1.0	2.0	3.0	4.0	5.0
(GS out)	ALTITUDE	320'	640'	960'	1280'	1600'

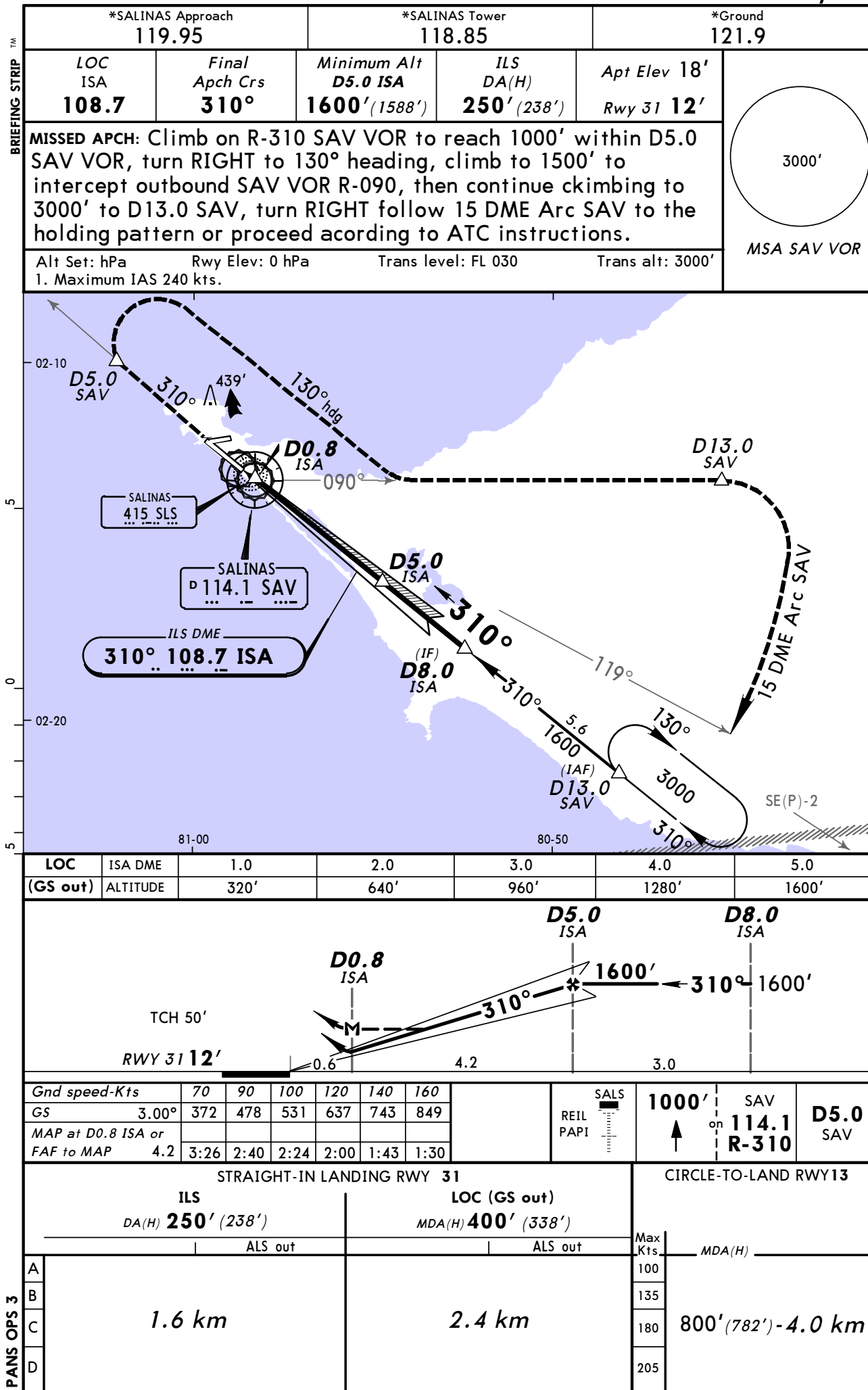


Gnd speed-Kts	70	90	100	120	140	160	<div><div>SALS</div><div>REIL PAPI</div><div><div>1000'</div><div>↑</div><div>on</div></div><div><div>SAV</div><div>114.1</div><div>R-295</div></div><div><div>D5.0</div><div>SAV</div></div></div>
GS 3.00°	372	478	531	637	743	849	
MAP at D0.8 ISA or							
FAF to MAP 4.2	3:36	2:48	2:31	2:06	1:48	1:35	

STRAIGHT-IN LANDING RWY 31				CIRCLE-TO-LAND RWY13		
ILS		LOC (GS out)		Max Kts	MDA(H)	
DA(H) 250' (238')		MDA(H) 400' (388')				
ALS out		ALS out				
A	1.6 km		2.4 km		100	800' (782') - 4.0 km
B					135	
C					180	
D					205	







SESA/SNC

JEPPESEN

SALINAS, ECUADOR

DESCENT 10

GEN ULPIANO PAEZ

15 FEB 13 (11-7)

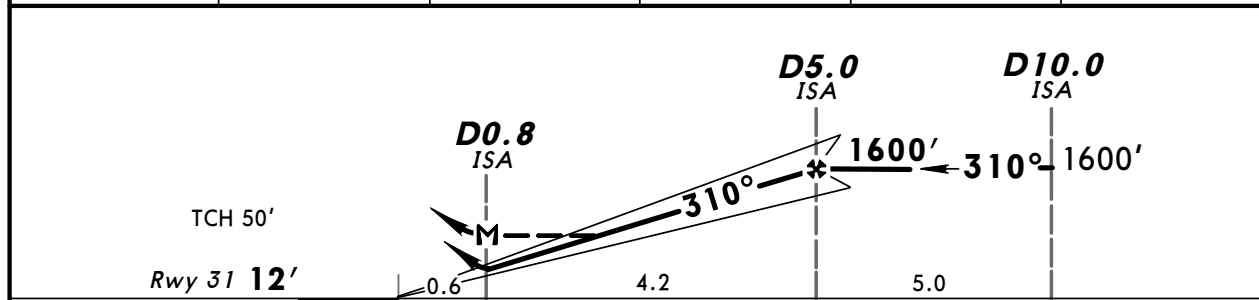
VOR DME ILS DME Rwy 31

BRIEFING STRIP™

*SALINAS Approach 119.95		*SALINAS Tower 118.85		*Ground 121.9	
LOC ISA 108.7	Final Apch Crs 310°	Minimum Alt D5.0 ISA 1600' (1588')	ILS DA(H) 250' (238')	Apt Elev 18' Rwy 31 12'	<div><div>3000'</div><div>MSA SAV VOR</div></div>
MISSED APCH: Climb on R-295 SAV VOR to reach 1000' within 5 NM, turn RIGHT to SAV VOR to hold at 3000' or proceed according to ATC instructions.					
Alt Set: hPa Rwy Elev: 0 hPa		Trans level: FL 030		Trans alt: 3000'	
1. Maximum IAS 240 kts.					



LOC	ISA DME	2.0	3.0	4.0	5.0
(GS out)	ALTITUDE	640'	960'	1280'	1600'



Gnd speed-Kts	70	90	100	120	140	160	<div style="display: flex; align-items: center;"> <div style="margin-right: 10px;"> 1000' ↑ on R-295 within 5 NM </div> <div style="border-left: 1px solid black; padding-left: 10px;"> SAV 114.1 </div> </div>	
GS 3.00°	372	478	531	637	743	849		
MAP at D0.8 ISA or FAF to MAP 4.2	3:36	2:48	2:31	2:06	1:48	1:35		

STRAIGHT-IN LANDING RWY 31				CIRCLE-TO-LAND RWY13			
ILS DA(H) 250' (238')		LOC (GS out) MDA(H) 400' (388')					
	RAIL out	ALS out		RAIL out	ALS out	Max Kts	MDA(H)
A	1.6 km		2.4 km			100	800' (782') - 4.0 km
B						135	
C						180	
D						205	

CHANGES: Procedure.

© JEPPESEN, 2003, 2013. ALL RIGHTS RESERVED.

SESA/SNC

GEN ULPIANO PAEZ

15 FEB 13

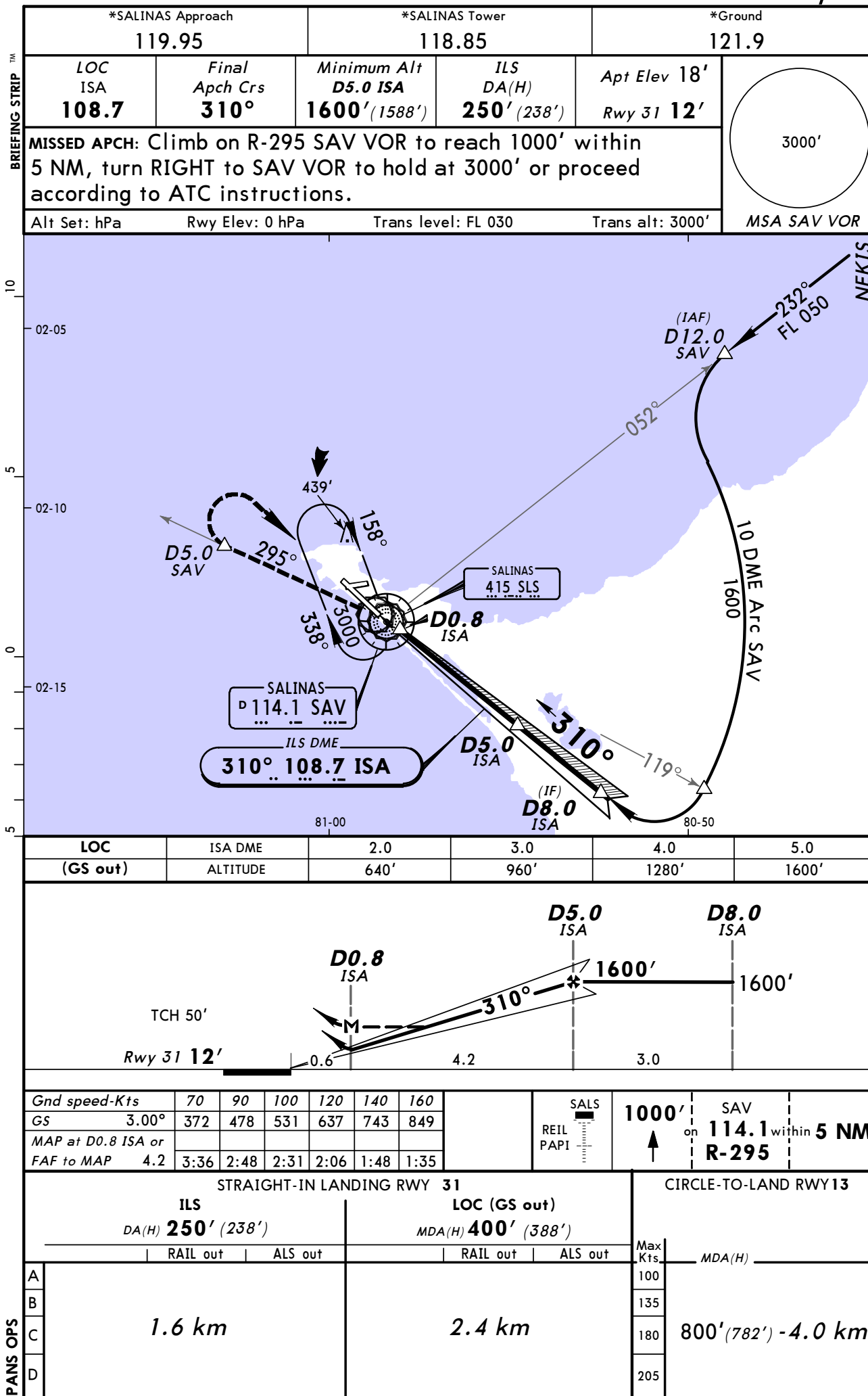
(11-8)

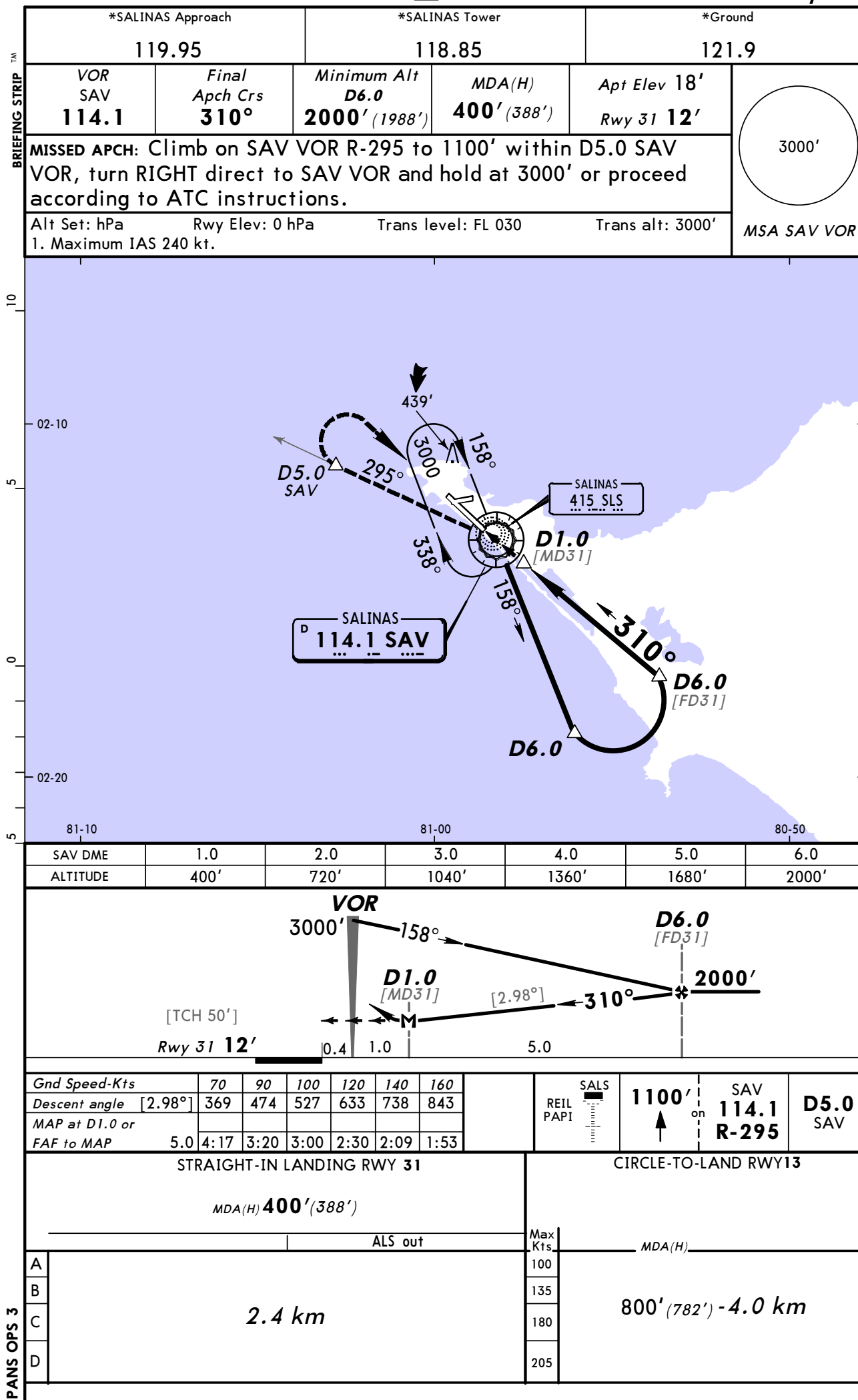
JEPPESSEN

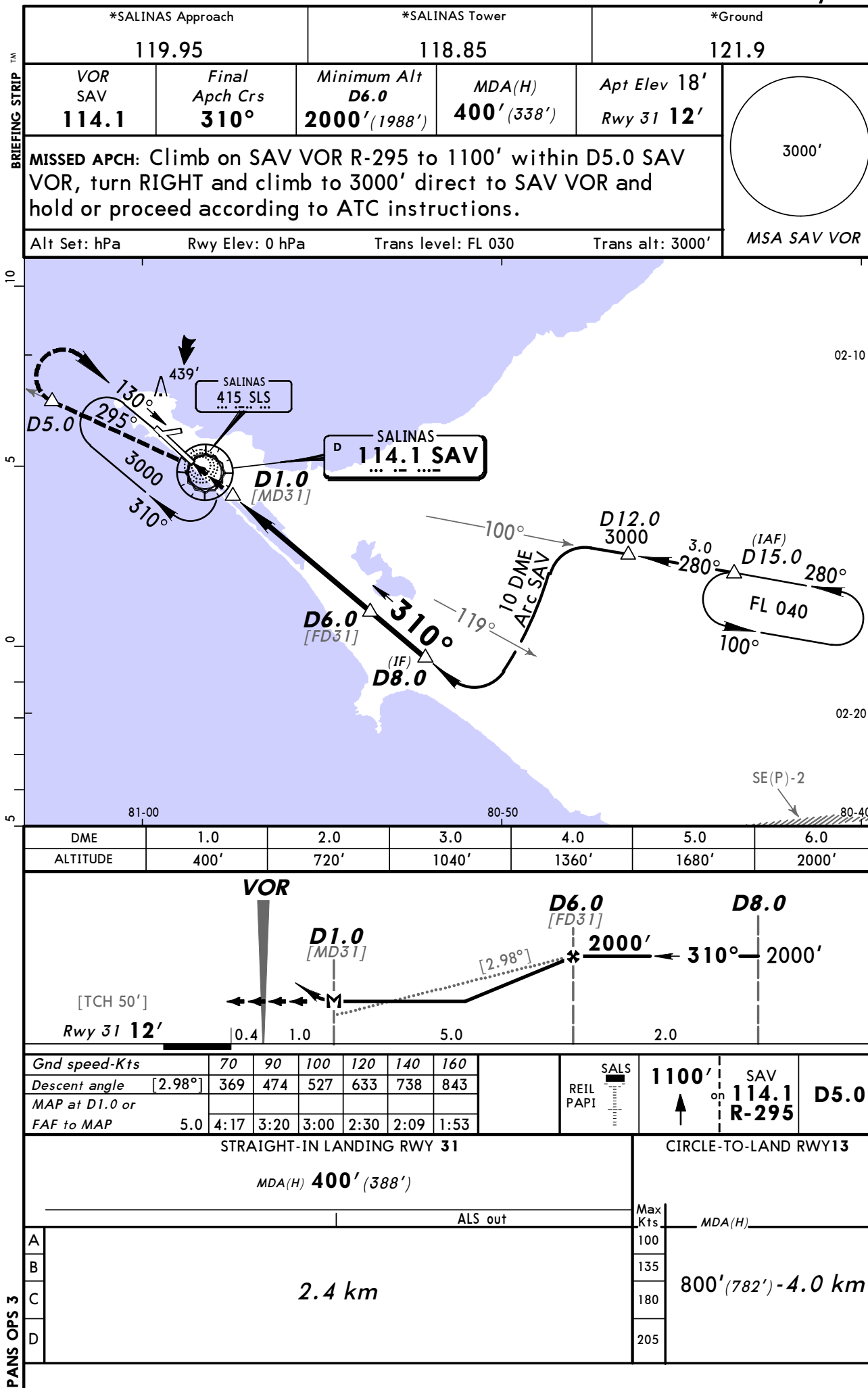
SALINAS, ECUADOR

DESCENT 12

Arc DME ILS DME Rwy 31

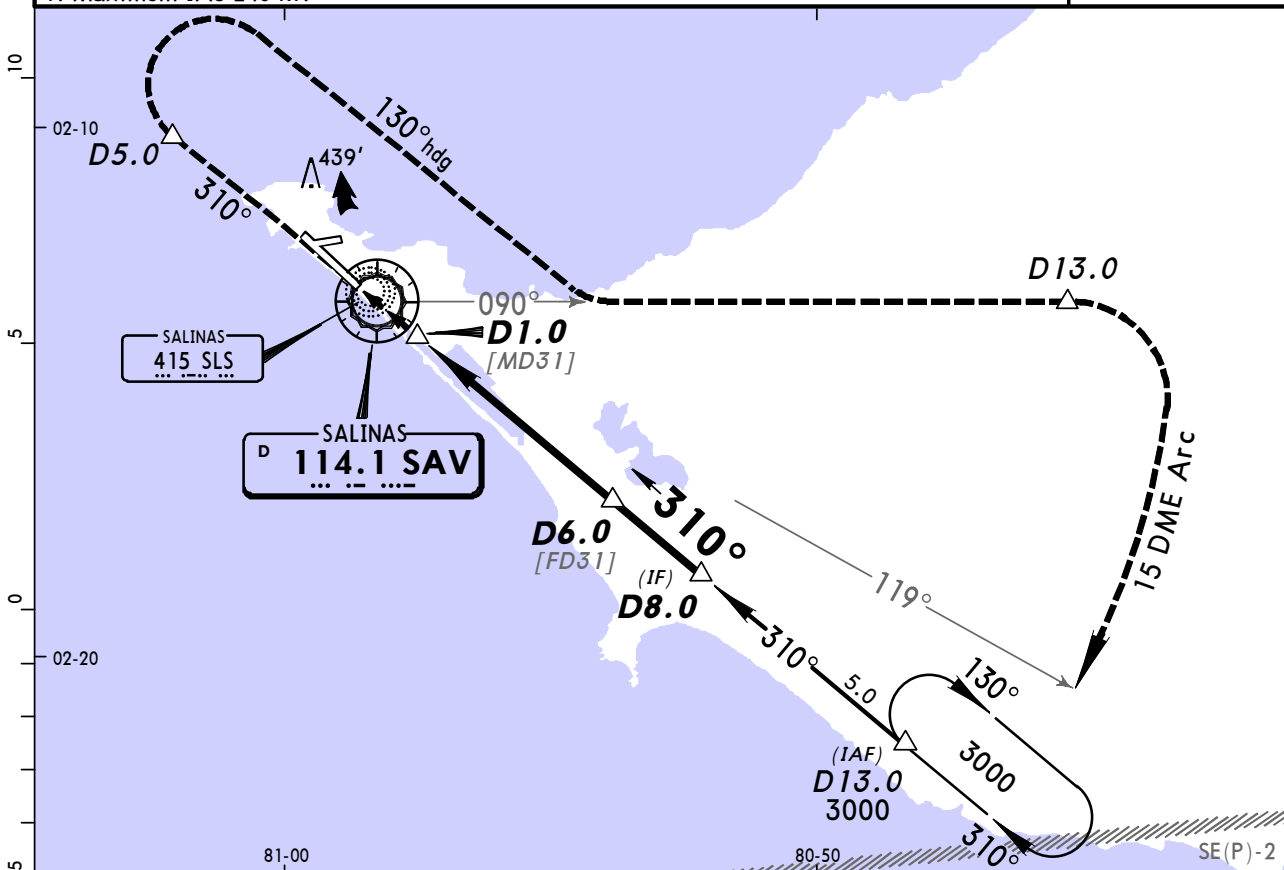




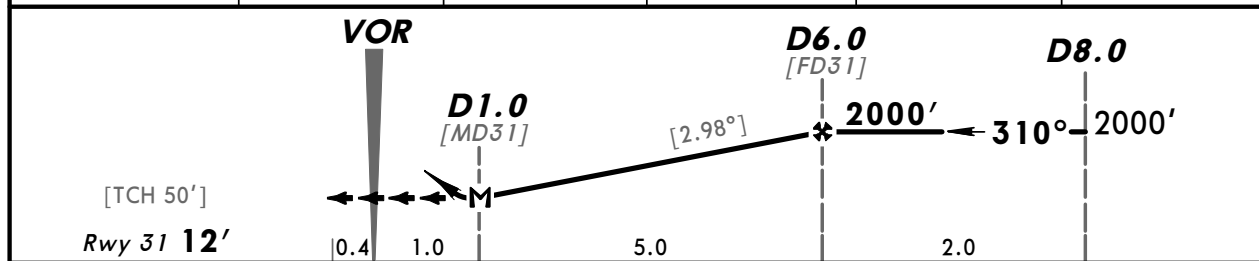


BRIEFING STRIP™

*SALINAS Approach 119.95		*SALINAS Tower 118.85		*Ground 121.9	
VOR SAV 114.1	Final Apch Crs 310°	Minimum Alt D6.0 2000' (1988')	MDA(H) 400' (388')	Apt Elev 18' Rwy 31 12'	<div>3000'</div> <div>MSA SAV VOR</div>
MISSED APCH: Climb on SAV VOR R-310 to 1100' within D5.0 SAV VOR, turn RIGHT to 130° heading, climb to 1500' and intercept outbound SAV VOR R-090, then continue climbing to 3000' to D13.0, turn RIGHT follow 15 DME Arc and hold or proceed according to ATC instructions.					
Alt Set: hPa 1. Maximum IAS 240 kt.		Rwy Elev: 0 hPa	Trans level: FL 030	Trans alt: 3000'	



SAV DME	2.0	3.0	4.0	5.0	6.0
ALTITUDE	520'	840'	1160'	1480'	1800'



Gnd speed-Kts	70	90	100	120	140	160	SALS REIL PAPI	1100' ↑ on 114.1 SAV R-310 within D5.0
Descent angle [2.98°]	369	474	527	633	738	843		
MAP at D1.0 or								
FAF to MAP	5.0	4:17	3:20	3:00	2:30	2:09		

STRAIGHT-IN LANDING RWY 31				CIRCLE-TO-LAND RWY 13			
MDA(H) 400' (388')							
ALS out				Max Kts	MDA(H)		
2.4 km				100	800' (782') - 4.0 km		
				135			
				180			
				205			

