

FINAL SUBDIVISION MAP OF
FIDDLETOWN RANCHETTES

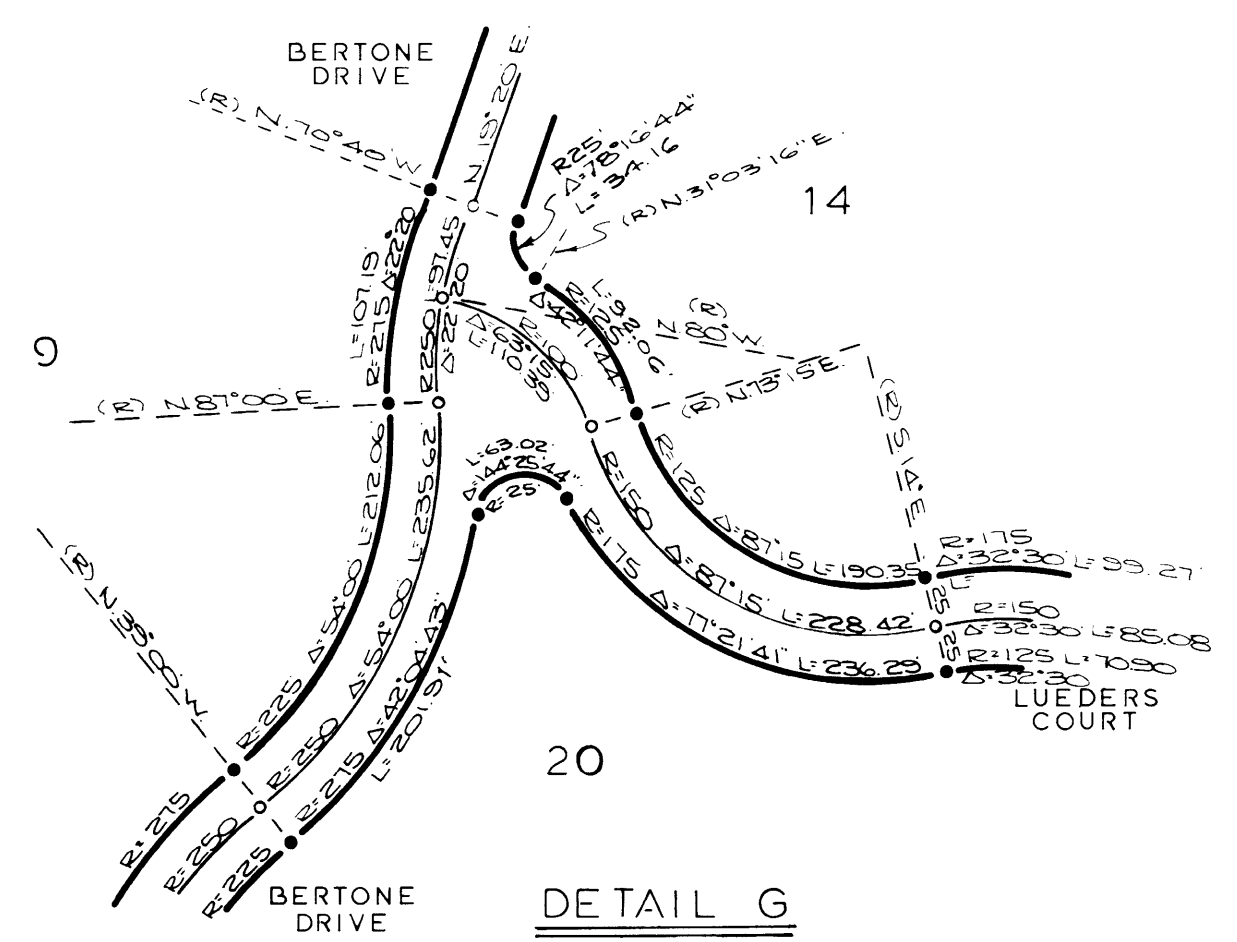
A PARTNERSHIP 308-OR-550

BEING A PORTION OF SECTION 36, T.8 N., R.11 E., & A PORTION OF SECTION 31, T.8 N., R.12 E., M. D. M. — AMADOR COUNTY, CA.

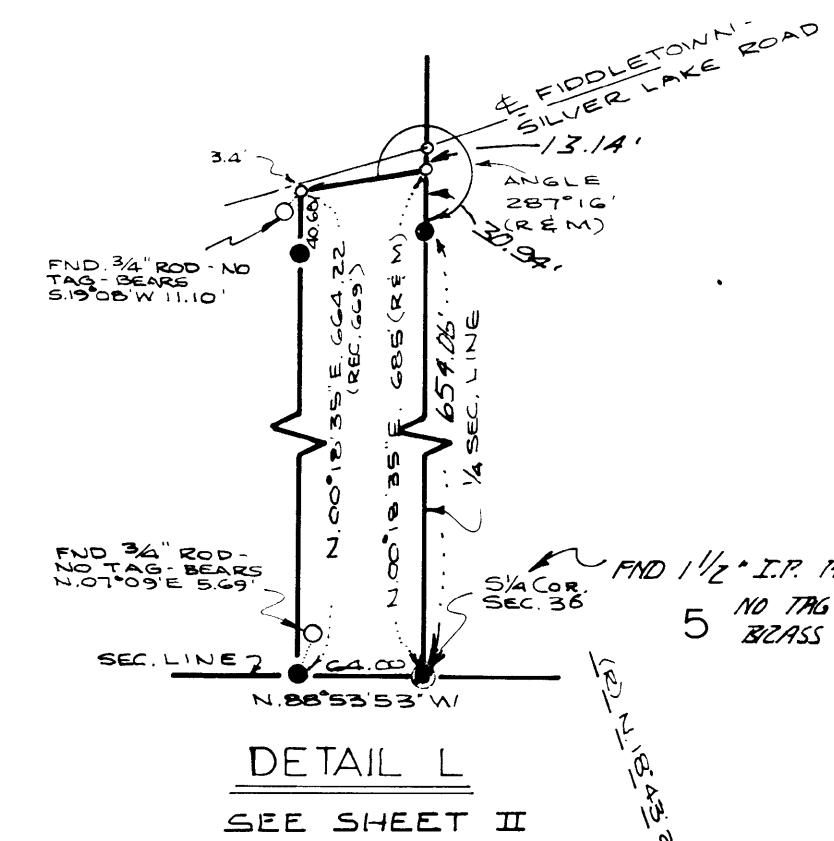
TOMA & ANDERSON-LICENSED LAND SURVEYORS-41 SUMMIT STREET
JACKSON, CALIFORNIA

DATE: DECEMBER, 1978

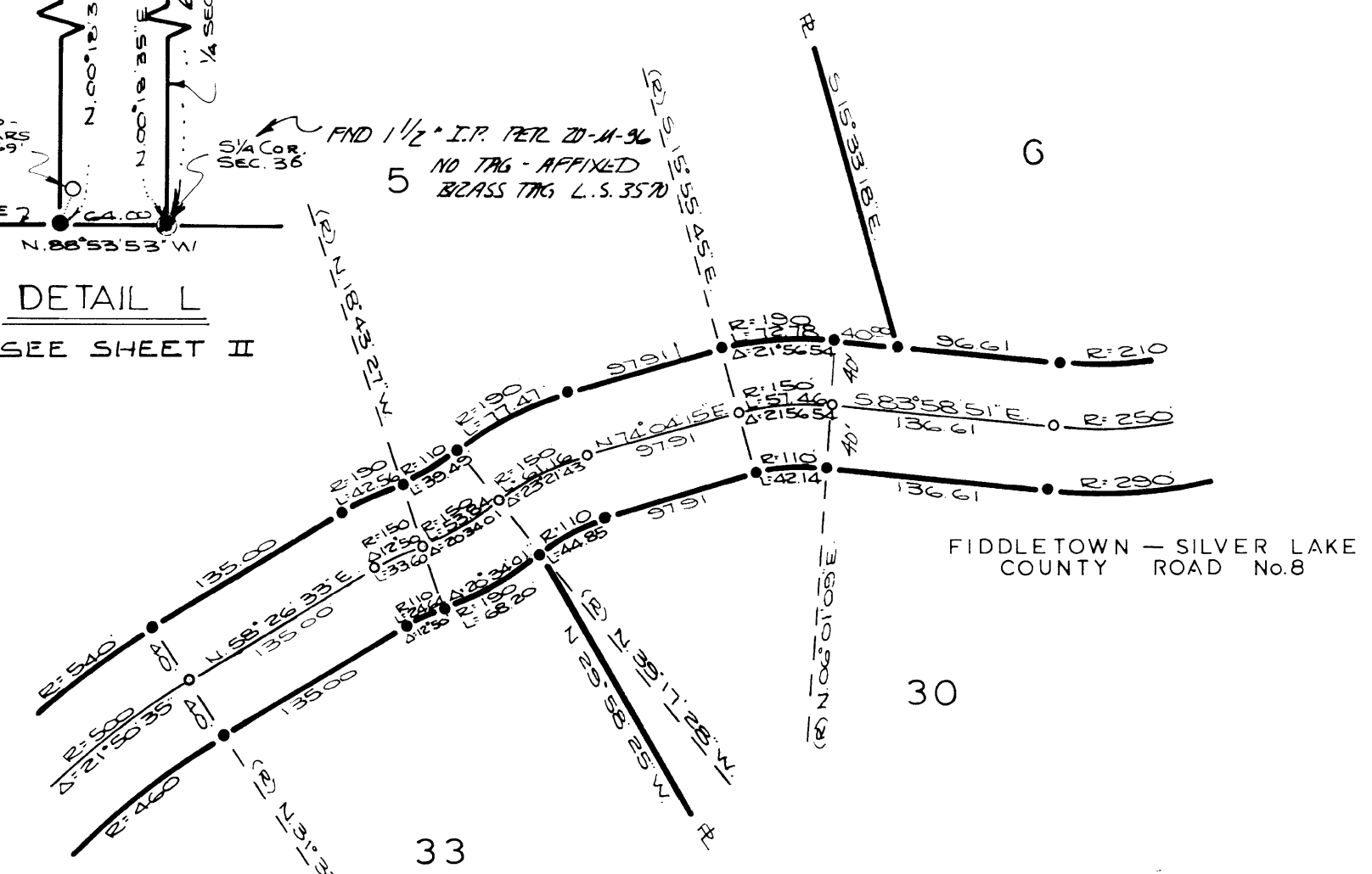
SCALE: 1"=100'



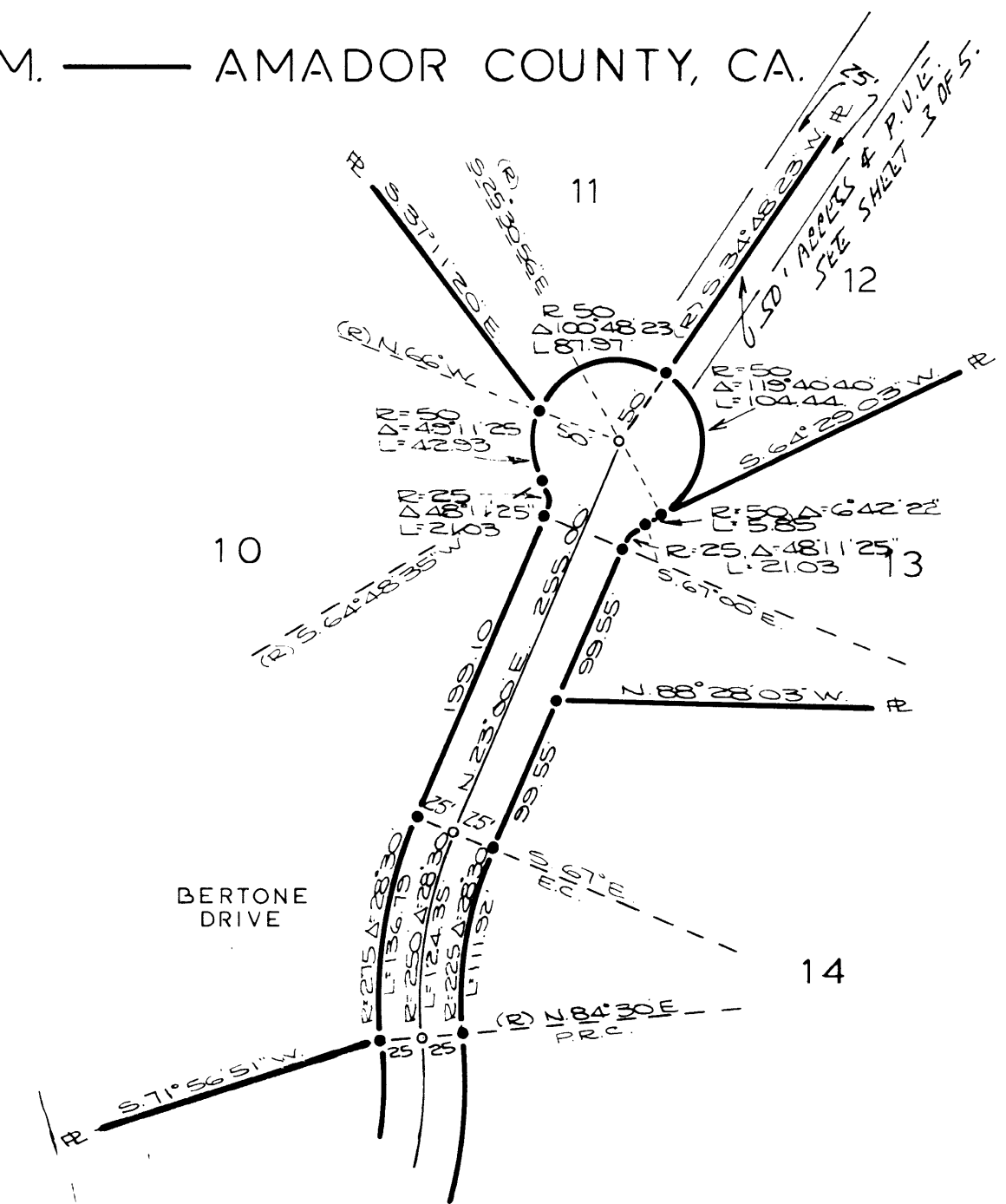
DETAIL G
SEE SHEET III



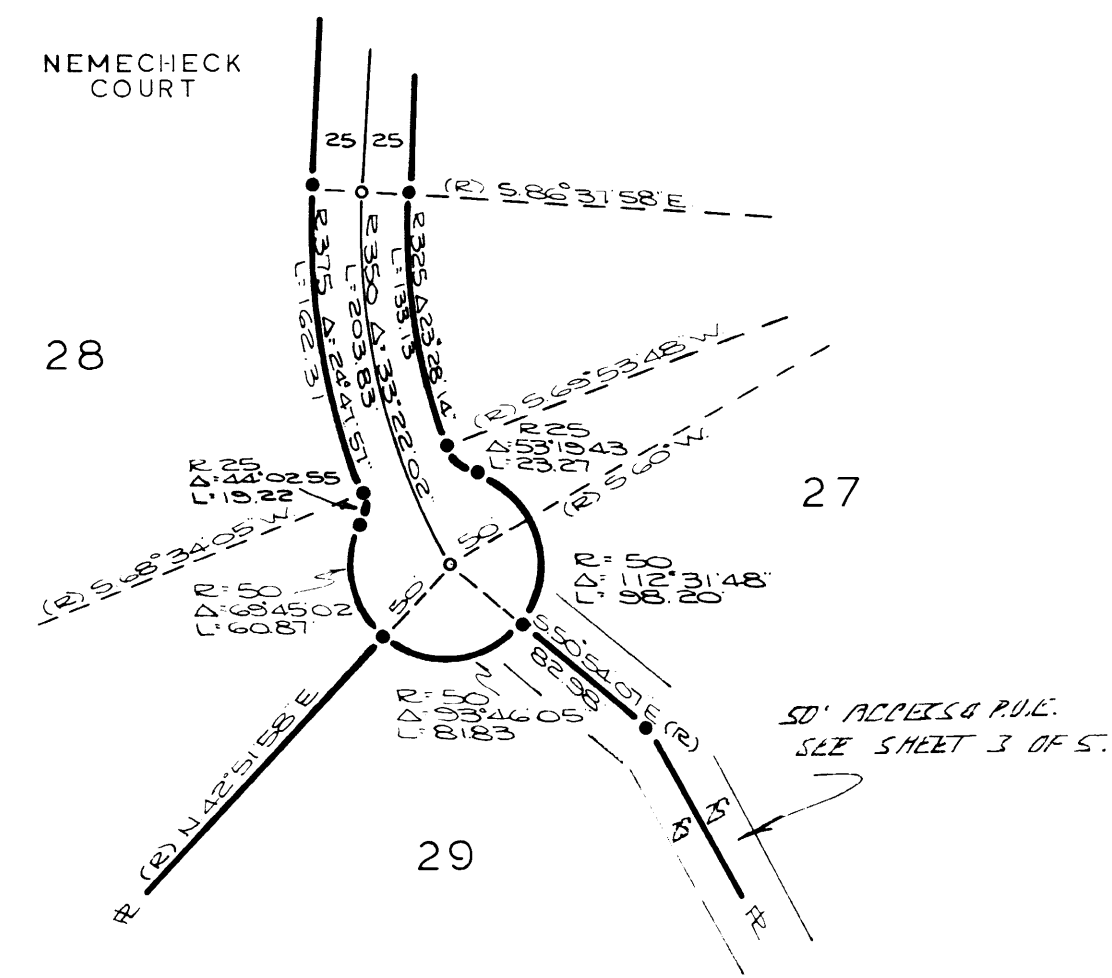
DETAIL L
SEE SHEET II



DETAIL H
SEE SHEET II



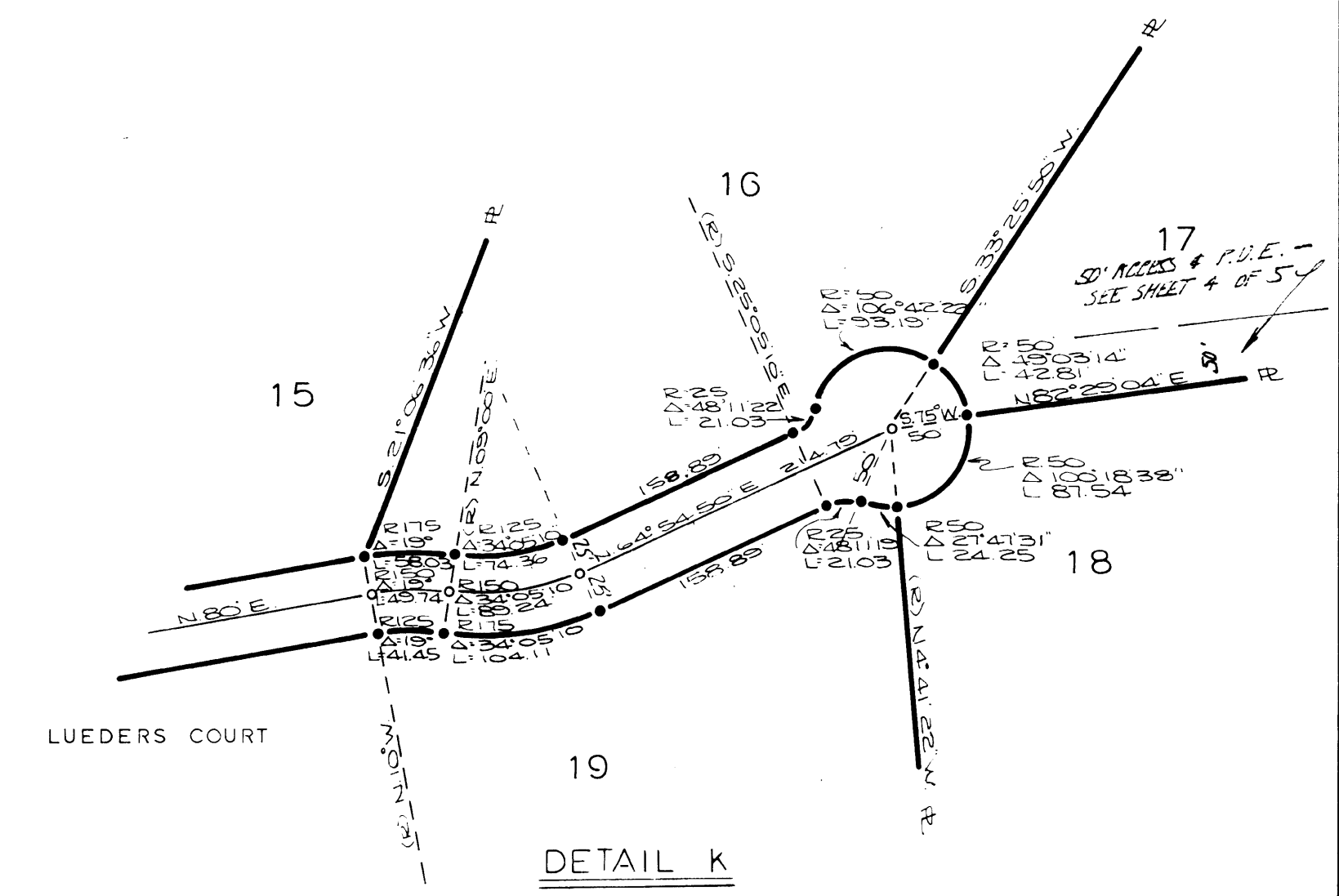
DETAIL I
SEE SHEET III



DETAIL J
SEE SHEET II

LEGEND

- DENOTES 3/4" REBAR TAGGED L.S. 3570 WILL BE SET BY OCT. 17, 1979
- x-x- DENOTES FENCE POST OR ANGLE POINT IN FENCE LINE, ALSO TAGGED L.S. 3570 BY JAN. 17, 1980
- DENOTES CALCULATED POINT ONLY... NOTHING FOUND OR SET.....
- OTHER MONUMENTS NOTED ON PLAT.....



DETAIL K
SEE SHEET III