

HOOD INFORMATION – Job#2788398

HOOD NO.	TAG	MODEL	LENGTH	MAX. COOKING TEMP.	EXHAUST PLENUM RISER(S)							HOOD CONSTRUCTION	HOOD CONFIG.	
					TOTAL EXH. CFM	WIDTH	LENG.	HEIGHT	DIA.	CFM	S.P.		END TO END	ROW
1		3044 BD-2	5' 0.00"	450 Deg.	1200			4'	12"	1200	-0.452"	430 SS Where Exposed	ALONE	ALONE

HOOD INFORMATION

HOOD NO.	TAG	FILTER(S)					LIGHT(S)				UTILITY CABINET(S)				FIRE SYSTEM PIPING	HOOD HANGING WGT	
		TYPE	QTY.	HEIGHT	LENGTH	EFFICIENCY @ 9 MICRONS	QTY.	TYPE	WIRE GUARD	LOCATION	SIZE	FIRE SYSTEM		ELECTRICAL			SWITCHES
												TYPE	SIZE	MODEL #			QUANTITY
1		SS Baffle with Handles	3	16"	16"	30%	2	Screw In Compact	NO	Left	12"x30"x24"	Ansul R102	3.0			YES	280 LBS

HOOD OPTIONS

HOOD NO.	TAG	OPTION									
		FIELD WRAPPER	31.00'	High	Front, Left, Right						
1		BACKSPLASH	63.00'	High	X 72.00'	Long	430 SS	Vertical			
		BACKSPLASH	114.00'	High	X 18.00'	Long	430 SS	Vertical			
		BACKSPLASH	114.00'	High	X 18.00'	Long	430 SS	Vertical			
		RIGHT QUARTER END PANEL	20'	Top Width,	0'	Bottom Width,	20'	High	430 SS		
		LEFT QUARTER END PANEL	20'	Top Width,	0'	Bottom Width,	20'	High	430 SS		

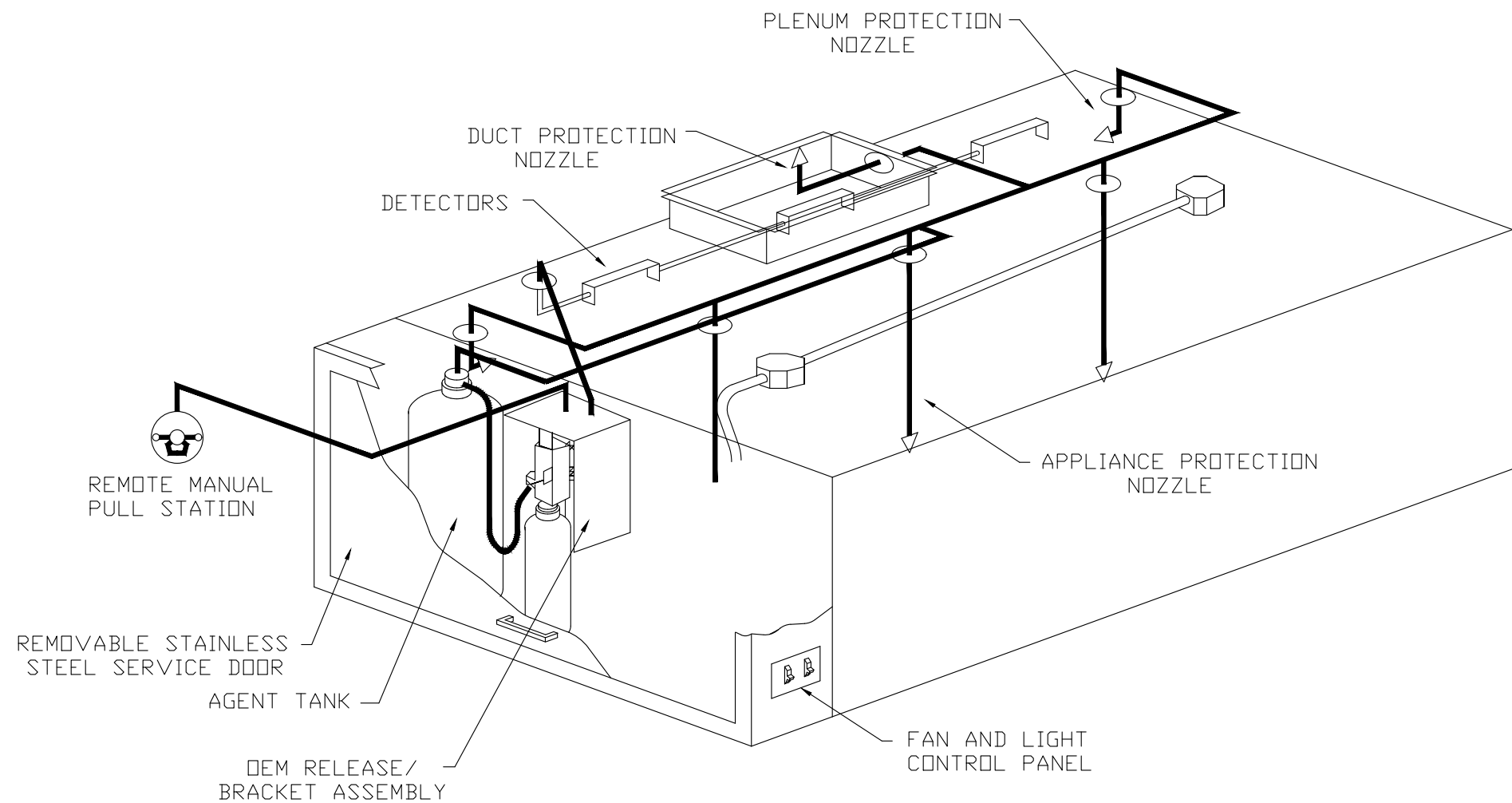
SPECIFICATIONS

THE RESTAURANT FIRE SUPPRESSION SYSTEM SHALL BE THE PRE-ENGINEERED TYPE WITH A FIXED NOZZLE AGENT DISTRIBUTION NETWORK. IT SHALL BE LISTED WITH UNDERWRITERS LABORATORIES, INC. (UL)

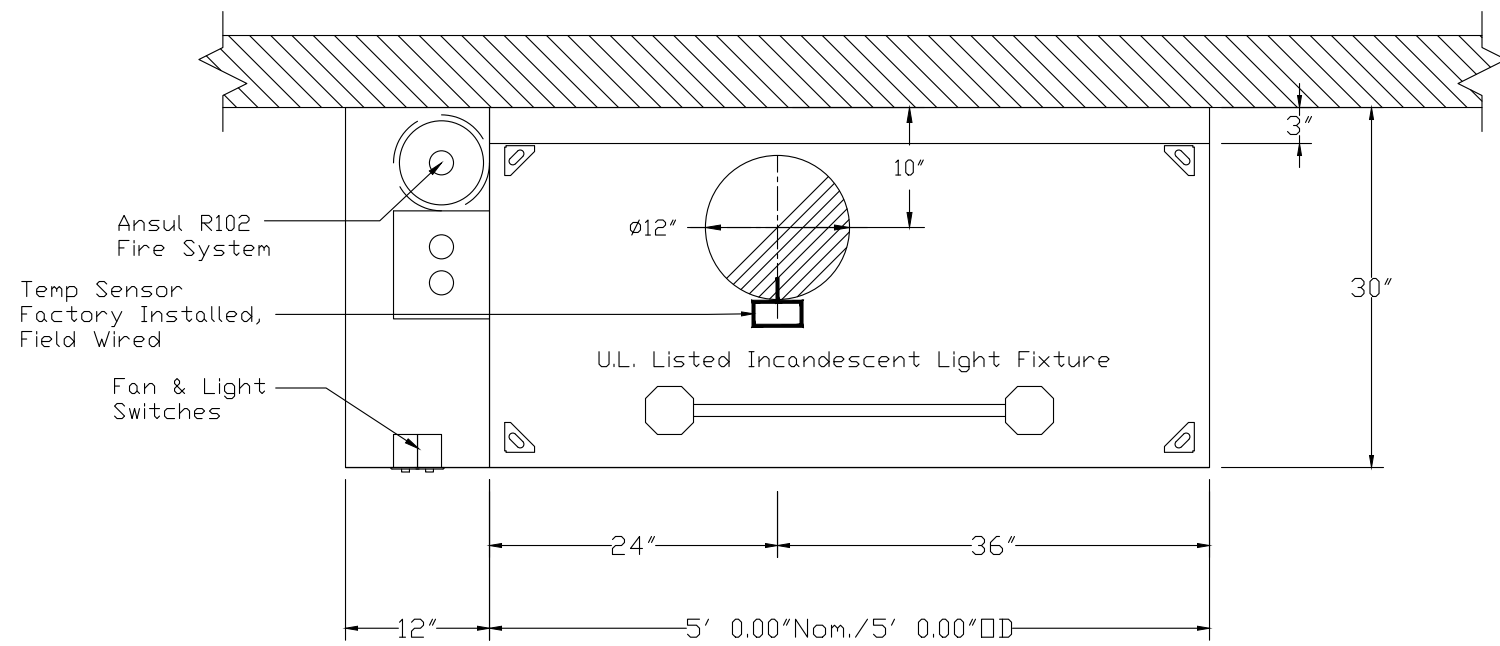
THE SYSTEM SHALL BE CAPABLE OF AUTOMATIC DETECTION AND ACTUATION WITH LOCAL OR REMOTE MANUAL ACTUATION. ACCESSORIES SHALL BE AVAILABLE FOR MECHANICAL OR ELECTRICAL GAS LINE SHUT-OFF APPLICATIONS.

THE EXTINGUISHING AGENT SHALL BE A POTASSIUM CARBONATE, POTASSIUM ACETATE-BASED FORMULATION DESIGNED FOR FLAME KNOCKDOWN AND SECUREMENT OF GREASE RELATED FIRES. IT SHALL BE AVAILABLE IN PLASTIC CONTAINERS WITH INSTRUCTIONS FOR LIQUID AGENT HANDLING AND USAGE.

THE REGULATED RELEASE MECHANISM SHALL BE COMPATIBLE WITH A FUSIBLE LINK DETECTION SYSTEM. THE FUSIBLE LINK SHALL BE SELECTED AND INSTALLED ACCORDING TO THE OPERATING TEMPERATURE IN THE VENTILATING SYSTEM. THE FUSIBLE LINK SHALL BE SUPPORTED BY A DETECTOR BRACKET/ LINKAGE ASSEMBLY.

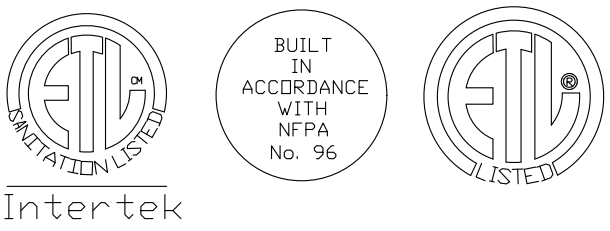


TYPICAL ANSUL R-102 SYSTEM LAYOUT



PLAN VIEW – Hood #1 (H-1)
5' 0.00" LONG 3044BD-2

CAPTIVE-AIRE HOODS ARE BUILT IN COMPLIANCE WITH



NFPA #96
UL 710 & ULC710 STANDARDS
E.T.L. LISTED 3054804-001

UNLESS SPECIFICALLY NOTED:

THE MODEL BD-2 HOOD IS LISTED WITH A MINIMUM SIDE OVERHANG TO THE COOKING EQUIPMENT SURFACE OF 0", AND A MINIMUM FRONT OVERHANG OF -3". FOR 450°F APPLICATIONS, THE MINIMUM EXHAUST RATE IS 150 CFM/FT.

HVAC DISTRIBUTION NOTE

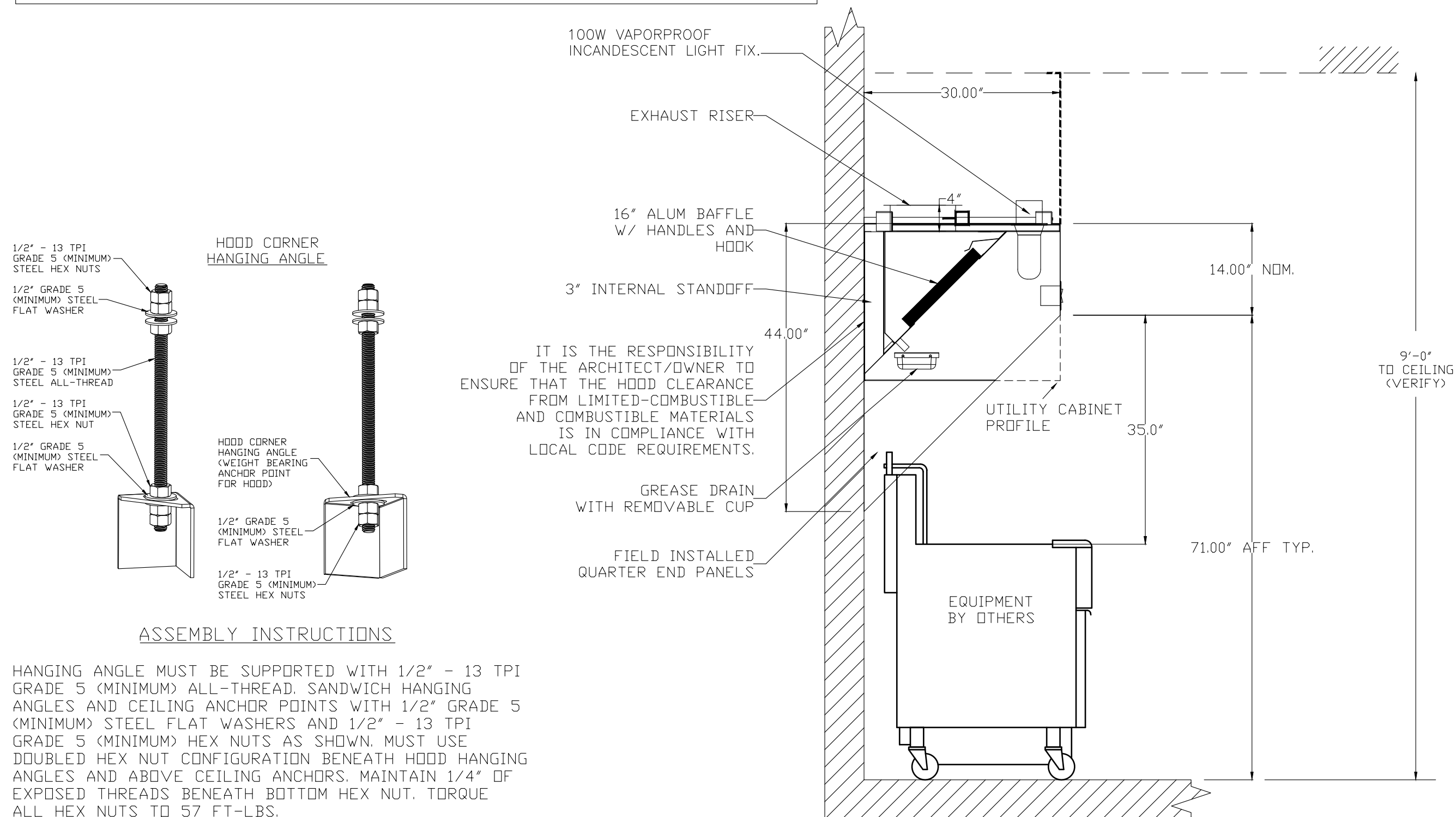
IT IS RECOMMENDED NOT TO INSTALL HIGH VELOCITY DIFFUSERS OR HVAC RETURNS WITHIN TEN (10) FEET OF THE EXHAUST HOOD. PERFORATED DIFFUSERS ARE RECOMMENDED.

CAPTIVEAIRE SYSTEMS RECOMMENDS THE USE OF LISTED, PRE-FABRICATED ROUND GREASE EXHAUST DUCT TO REDUCE STATIC PRESSURE IN THE SYSTEM, MINIMIZE INSTALLATION AND INSPECTION TIMES, AND ENSURE DUCT IS LIQUID TIGHT

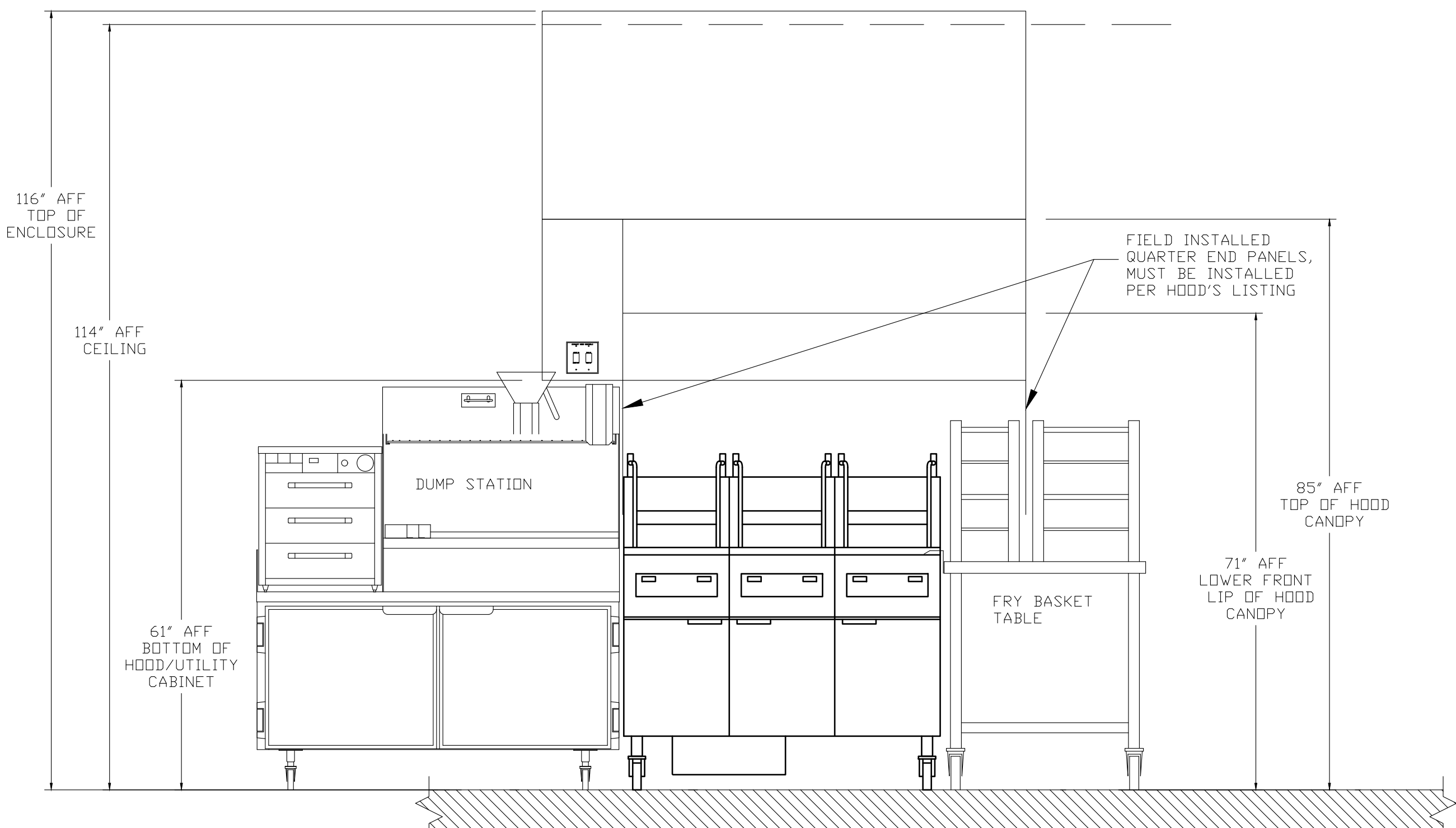
VERIFY CEILING HEIGHT

' - "

HEIGHT REQUIRED TO VERIFY THAT HOOD FITS SPACE AND TO SIZE THE ENCLOSURE PANELS



SECTION VIEW – MODEL 3044BD-2 w/ PSP



ELEVATION VIEW – MODEL 3044BD-2

REVISIONS

DESCRIPTION	DATE:

CAPTIVEAIRE

www.captiveaire.com

Atlanta Office

1395 S. Marietta Pkwy, Bldg 100, Ste 105, Marietta, GA 30067 PHONE: (800) 882-6626 FAX: (919) 227-5964 EMAIL: reg50@captiveaire.com



PROPRIETARY INFORMATION NOTICE:
THESE PROTOTYPICAL DOCUMENTS MAY REQUIRE REVISIONS TO CONFORM TO LOCAL, STATE, AND FEDERAL CODES, ORDINANCES OR OTHER CONDITIONS. THE DESIGN CONCEPTS EMBODIED IN THESE DOCUMENTS ARE SPECIFICALLY FOR THIS PROJECT. INFORMATION CONTAINED HEREIN REMAINS THE SOLE PROPERTY OF ARBY'S RESTAURANT GROUP, IS CONFIDENTIAL AND PROPRIETARY AND IS NOT TO BE COPIED, REPRODUCED, DISCLOSED OR OTHERWISE TRANSFERRED TO OTHER PARTIES IN ANY FORM WHATSOEVER WITHOUT THE EXPRESS WRITTEN CONSENT OF ARBY'S RESTAURANT GROUP.



Copyright 2020 by Arby's Restaurant Group

ARBY'S RESTAURANT GROUP
INSPIRE DUAL REGULAR 40 - STANDARD
1632 AR-25 BYPASS
HEBER SPRINGS, AR 72543
FOR
RB AMERICAN GROUP, LLC
6200 OAK TREE BLVD., SUITE 250, INDEPENDENCE, OHIO 44131

PROJECT NUMBER:	
DATE:	9/28/2016
DWG.#:	2788398
DRAWN BY:	WAH-50
SCALE:	3/4" = 1'-0"
MASTER DRAWING	

CAPTIVEAIRE DRAWING

SHEET:

H1.1

Arby's

SHEET NO.

1