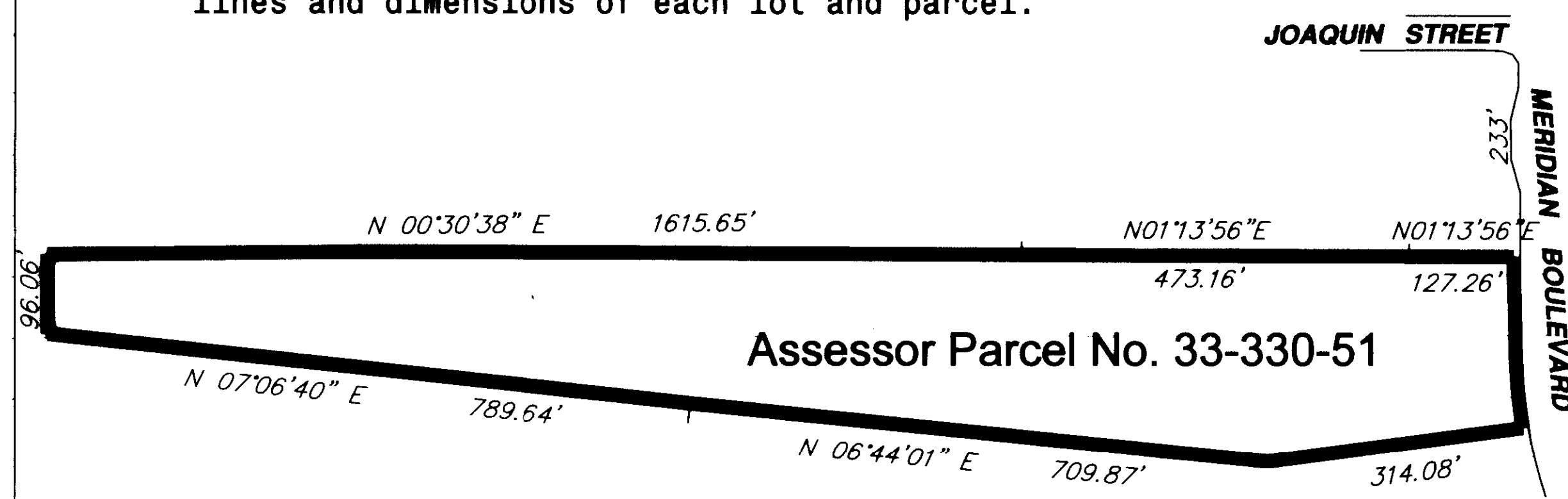


SHEET 1 OF 1

ANNEXATION MAP NO. 1 OF  
TOWN OF MAMMOTH LAKES  
COMMUNITY FACILITIES DISTRICT NO. 2004-1  
COUNTY OF MONO  
STATE OF CALIFORNIA

Reference is hereby made to the Assessor maps  
of the County of Mono for a description of the  
lines and dimensions of each lot and parcel.



(1) Filed in the office of the Town Clerk of the Town of Mammoth Lakes  
this 31<sup>st</sup> day of May, 2005.

Anita Hatter  
Anita Hatter, Town Clerk, Town of Mammoth Lakes

(2) I hereby certify that the within map showing the proposed boundaries of  
Annexation No. 1 of Town of Mammoth Lakes Community Facilities  
District No. 2004-1, County of Mono, State of California, was approved  
by the Town Council of the Town of Mammoth Lakes at a regular  
meeting thereof, held on this 1<sup>st</sup> day of June, 2005, by its  
Resolution No. 05-28.

Anita Hatter  
Anita Hatter, Town Clerk, Town of Mammoth Lakes

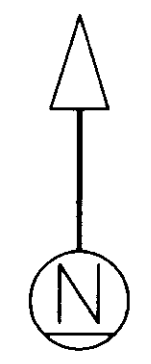
Reference is hereby made to that certain map entitled "Proposed Boundaries of  
Town of Mammoth Lakes Community Facilities District No. 2004-1, County of  
Mono, State of California," filed the 21st day of December, 2004, at the hour of 9:07  
a.m. in Book 2 of Maps of Assessment and Community Facilities Districts at page  
66, and as instrument number 2004011297 in the office of the County Recorder of  
the County of Mono, State of California, which this Annexation Map affects.

(3) Filed this 14<sup>th</sup> day of June, 2005, at the hour of 11:30 o'clock a.m.,  
in Book 2 of Maps of Assessment and Community Facilities  
Districts at page 67 and as Instrument No. 2005004771 in  
the office of the County Recorder of Mono County, State of California.

Renn Nolan  
Clerk - Recorder of Mono County

By Sherrie R. Hale  
Deputy

Fee \$0  
Exempt recording requested, per CA Government Code §6103



LEGEND

Boundaries of Annexation No. 1 to  
Town of Mammoth Lakes Community  
Facilities District No. 2004-1