

RECORD OF SURVEY NO. 36 - 96

BEING A SURVEY OF LOT 2, BLOCK 5, MAMMOTH CAMP TRACT 2 AS RECORDED IN MAP BOOK 1 PAGE 5, AND THE LOTS CREATED BY GRANT DEED RECORDED IN VOLUME 132 PAGE 435 OF OFFICIAL RECORDS; AND BEING A LOT LINE ADJUSTMENT BETWEEN PARCELS B, C, AND D AS RECORDED IN MAP BOOK 4 PAGE 60, PARCEL C-1 AS RECORDED IN MAP BOOK 5 PAGE 20, AND THE GRAVEYARD PARCEL AS RECORDED IN VOLUME 3 PAGE 449 OF OFFICIAL RECORDS, IN THE OFFICE OF THE MONO COUNTY RECORDER. LOCATED IN THE SOUTHWEST 1/4 OF SECTION 3, T.4S., R.27E., M.D.B. & M. IN THE TOWN OF MAMMOTH LAKES, COUNTY OF MONO, STATE OF CALIFORNIA.

UNLOCATABLE EASEMENTS

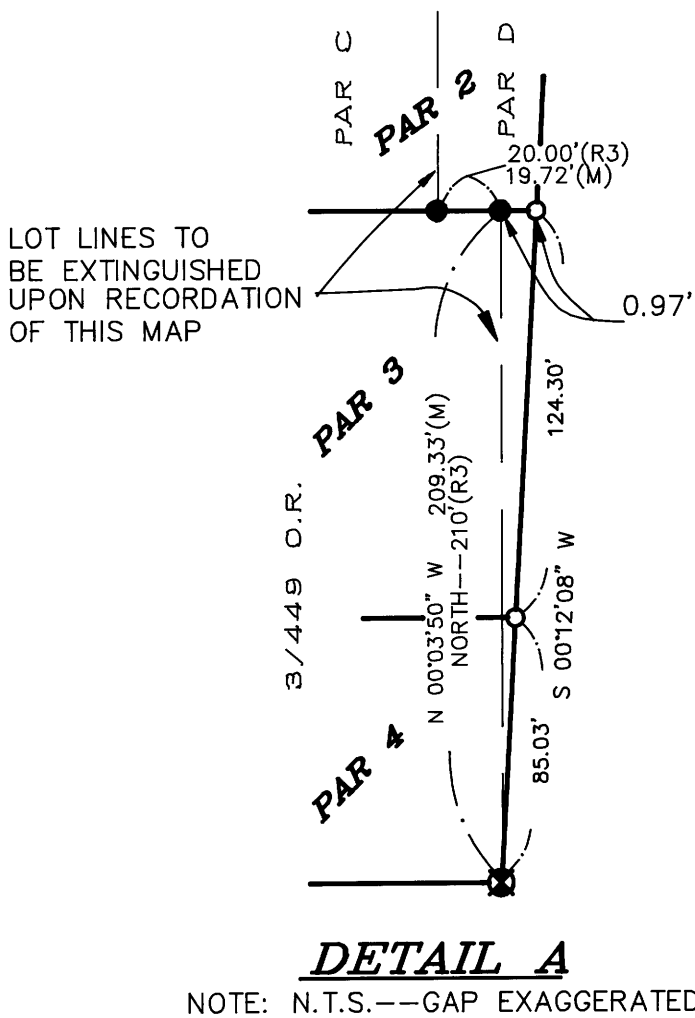
VOL 3/PAGE 449 PIPELINES AND ROAD IN A SOUTHEASTERLY DIRECTION FROM THE END OF TAMARACK TO THE GRAVEYARD PARCEL.  
VOL 92/PAGE 397 EASEMENT TO SCE FOR PUBLIC UTILITIES (INCOMPLETE DEED)

LEGEND

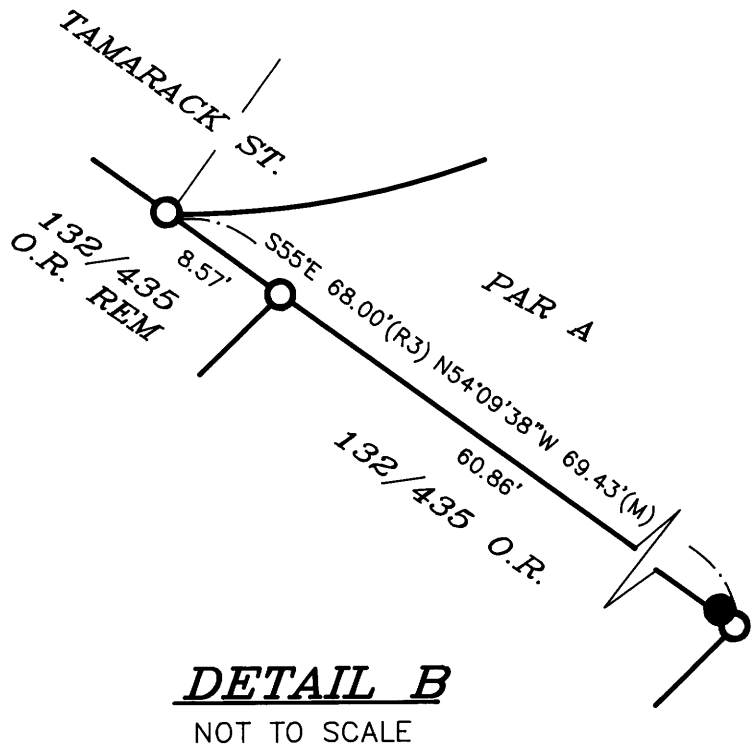
- SET REBAR AND CAP STAMPED "LS4587"
- FOUND 1/2" I.P. PER R3 UNLESS OTHERWISE NOTED
- FOUND S&W "LS4587" PER R5
- FOUND RB & CAP "LS4587" PER R5
- (M) MEASURED
- (CFR) CALCULATED FROM RECORD
- (R1) RECORD PER MB 1/5
- (R2) RECORD PER MB 1/11
- (R3) RECORD PER MB 4/60
- (R4) RECORD PER MB 5/20
- (R5) RECORD PER RSMB 2/99
- (R6) RECORD PER MB 1/1
- (R7) RECORD PER RSMB 2/89
- (R8) RECORD PER RSMB 1/28
- (R9) RECORD PER RSMB 2/105
- ① FOUND 2" IP "LS4587" PER R5
- ② FOUND 1/2" IP PER R3 S 55°53'57" W 3.98'--- NOT ACCEPTED
- ③ FOUND 1/2" IP PER R3 N 31°47'05" W 3.25'--- NOT ACCEPTED
- ④ FOUND 1/2" I.P. PER R3; ACCEPTED FOR PARCEL D, MB 4/60, BOUNDARY DISTURBED---REPLACED WITH REBAR & CAP "LS4587" ACCESS EASEMENT PER 593/391-4 O.R.
- ⑤ ACCESS EASEMENT PER 325/500,506-508 O.R.

CURVE DATA

CURVE	RADIUS	LENGTH	DELTA
C1	80.00'	50.96'	36°29'57"
C2	55.00'(R3,M)	120.47'(M)	125°30'06"(M)
		120'(R3)	125'(R3)
C3	40.00'	83.83'	120°05'01"
C4	40.00'	23.26'	33°18'57"
C5	40.00'	42.61'	61°02'13"
C6	25.00'	42.26'	96°51'47"
C7	30.00'	13.70'	26°09'54"
C8	70.00'	31.97'	26°09'54"
C9	70.00'	31.97'	26°09'54"
C10	65.00'	41.14'	36°15'42"



NOTE: N.T.S.--GAP EXAGGERATED



NOT TO SCALE

